



US00D569695S

(12) **United States Design Patent**
Zimmer

(10) **Patent No.:** **US D569,695 S**

(45) **Date of Patent:** **** May 27, 2008**

(54) **PLANTING TOOL**

(76) Inventor: **Mike Zimmer**, 13805 W. 56th Ter.,
Shawnee, KS (US) 66216-5016

(**) Term: **14 Years**

(21) Appl. No.: **29/241,109**

(22) Filed: **Oct. 24, 2005**

(51) **LOC (8) Cl.** **08-01**

(52) **U.S. Cl.** **D8/1**

(58) **Field of Classification Search** D8/1,
D8/7; 294/49, 50.5, 50.7, 50.8; 111/7.1,
111/99, 101, 106, 114, 115

See application file for complete search history.

(56) **References Cited**

U.S. PATENT DOCUMENTS

1,757,925	A *	5/1930	Kirkpatrick	294/49
2,207,741	A *	7/1940	Kimble	111/99
3,749,034	A	7/1973	Bergius et al.		
4,031,832	A	6/1977	Edwards		
4,123,980	A	11/1978	Winston		
4,247,141	A	1/1981	Grint		
5,080,027	A	1/1992	Brothers		
5,109,930	A *	5/1992	Napier	172/13
5,156,101	A	10/1992	Wien		
5,228,400	A	7/1993	Luke		
D350,676	S *	9/1994	Lefkow	D8/1
5,492,070	A *	2/1996	Lefkow	111/115
D405,328	S *	2/1999	Bott	D8/1
D423,889	S *	5/2000	Heffner	D8/1
D424,894	S *	5/2000	Pottmeyer	D8/1
D427,029	S *	6/2000	Pottmeyer	D8/1
D434,284	S *	11/2000	Gracy	D8/1
D477,448	S *	7/2003	Cuccaro	D99/17

6,892,823	B2	5/2005	Cirella
2003/0127236	A1	7/2003	Wherry
2003/0136567	A1	7/2003	Wherry
2005/0006111	A1	1/2005	Wherry
2005/0045349	A1	3/2005	Cirella

* cited by examiner

Primary Examiner—Sheryl Friedman
(74) *Attorney, Agent, or Firm*—Ziolkowski Patent Solutions Group, SC

(57) **CLAIM**

The ornamental design for a planting tool, as shown and described herein.

DESCRIPTION

FIG. 1 is a perspective view of a planting tool in accordance with the present invention.

FIG. 2 is a front elevational view of the planting tool of FIG. 1.

FIG. 3 is a side elevational view of the planting tool of FIG. 1.

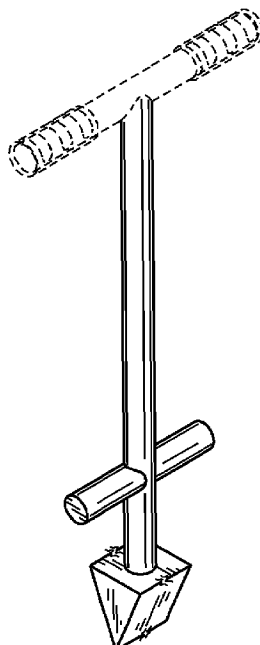
FIG. 4 is a top plan view of the planting tool of FIG. 1.

FIG. 5 is a bottom plan view of planting tool of FIG. 1; and, FIG. 6 is a cross-sectional view of a portion of the planting tool of FIG. 1 along line 6—6 as shown in FIG. 3, and also showing optional gusset supports in broken lines between a wedge portion and a base of a handle of the planting tool.

The broken lines shown in all figures are for illustrative purposes only and form no part of the claimed design.

Drawing FIGS. 1–6 are shown broken away to illustrate an indeterminate width.

1 Claim, 3 Drawing Sheets



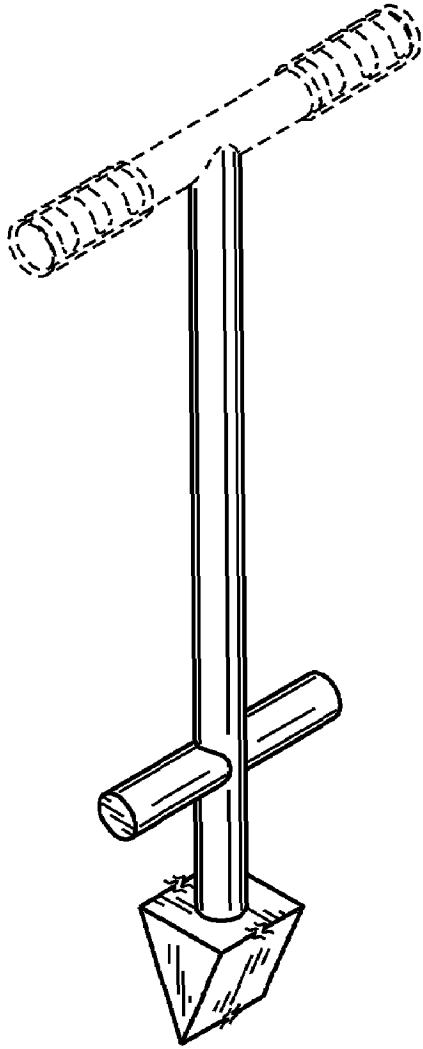


FIG. 1

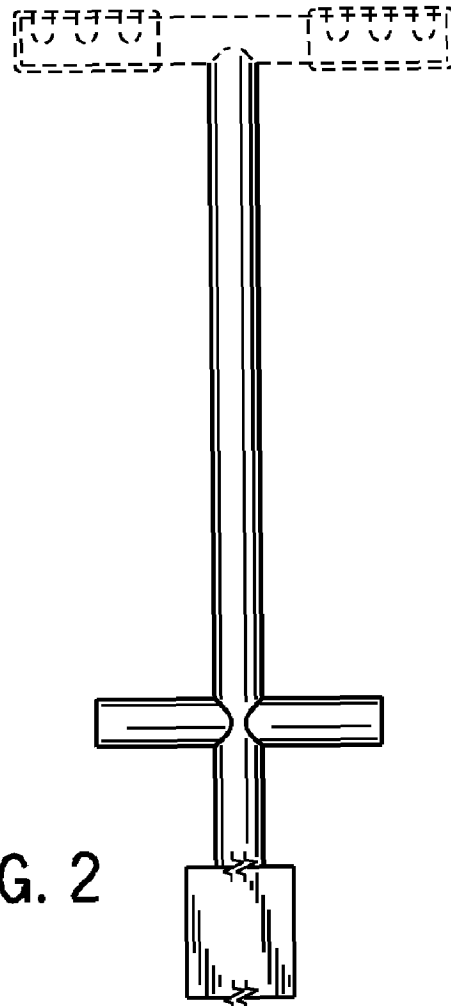


FIG. 2

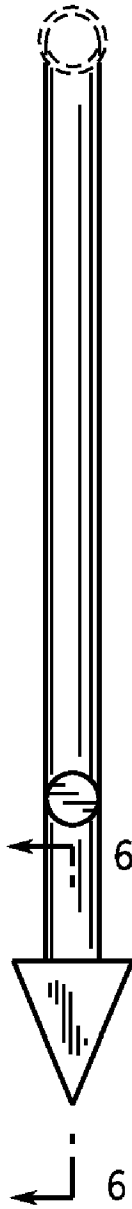


FIG. 3

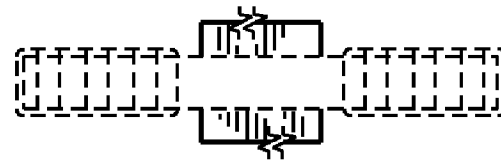


FIG. 4

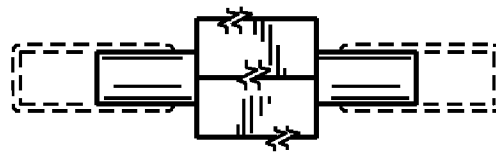


FIG. 5

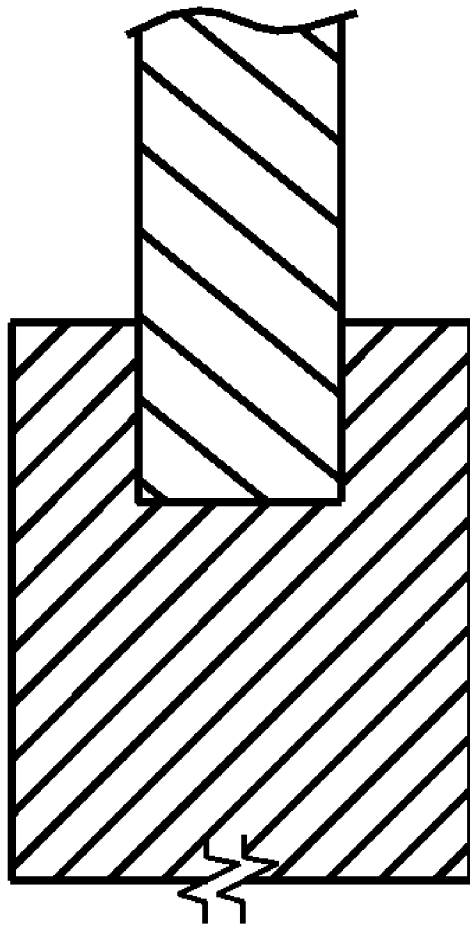


FIG. 6