



US008497761B2

(12) **United States Patent**
McNeill et al.

(10) **Patent No.:** **US 8,497,761 B2**
(45) **Date of Patent:** **Jul. 30, 2013**

(54) **SYSTEM AND METHOD FOR REMOTELY CONTROLLING DOCKING STATION COMPONENTS**

(75) Inventors: **Matthew C. McNeill**, White Fish Bay, WI (US); **Kyle E. Nelson**, Cedarburg, WI (US); **Richard A. Horton**, Oregon City, OR (US)

(73) Assignee: **Rite-Hite Holding Corporation**, Wilwaukee, WI (US)

(*) Notice: Subject to any disclaimer, the term of this patent is extended or adjusted under 35 U.S.C. 154(b) by 1502 days.

(21) Appl. No.: **10/905,633**

(22) Filed: **Jan. 13, 2005**

(65) **Prior Publication Data**
US 2006/0181391 A1 Aug. 17, 2006

(51) **Int. Cl.**
H04Q 9/00 (2006.01)

(52) **U.S. Cl.**
USPC **340/5.7**

(58) **Field of Classification Search**
USPC 340/686.1, 686.6, 687, 933, 5.85, 340/825.29, 5.51, 5.8, 2.4, 3.1, 4.6, 4.61; 700/17; 414/222.01
See application file for complete search history.

(56) **References Cited**

U.S. PATENT DOCUMENTS

3,961,323 A	6/1976	Hartkorn
3,969,584 A	7/1976	Miller et al.
4,010,571 A	3/1977	McGuire et al.
4,062,157 A	12/1977	Potthoff
4,122,629 A	10/1978	Rennick
4,688,244 A	8/1987	Hannon et al.

4,750,197 A	6/1988	Denekamp et al.
4,843,373 A	6/1989	Trickle et al.
4,849,735 A	7/1989	Kirtley et al.
5,047,748 A	9/1991	Trickle
5,168,267 A *	12/1992	Trickle 340/988
5,359,942 A	11/1994	Ward
5,453,735 A	9/1995	Hahn
5,459,963 A	10/1995	Alexander
5,640,139 A	6/1997	Egeberg
5,682,379 A	10/1997	Mahany et al.
5,755,126 A	5/1998	Lanigan et al.

(Continued)

FOREIGN PATENT DOCUMENTS

DE	10219852 B4	9/2006
EP	1467322 A2	10/2004

(Continued)

OTHER PUBLICATIONS

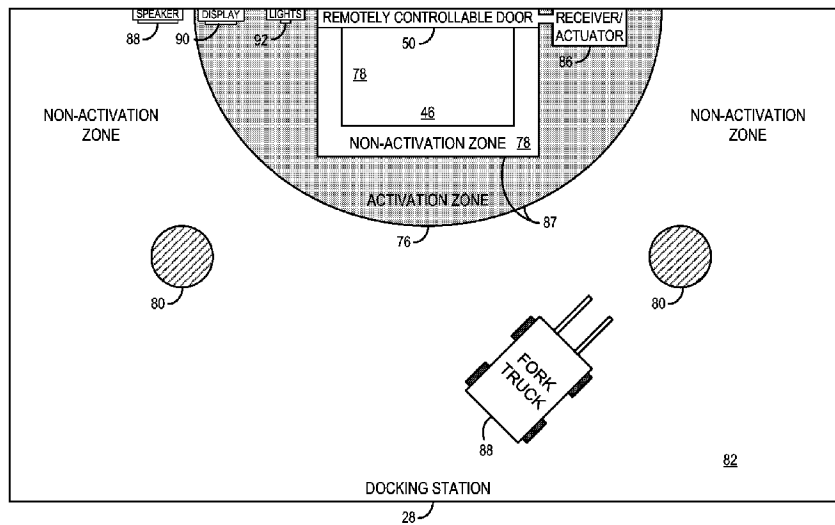
The-Extra Mile, Aug. 2001.

Primary Examiner — Jennifer Mehmood
Assistant Examiner — Yong Hang Jiang
(74) *Attorney, Agent, or Firm* — Ziolkowski Patent Solutions Group, SC

(57) **ABSTRACT**

A system and method for remotely controlling loading dock components is disclosed that includes a distribution center having at least one dock station for exchanging materials and a dock component configured to in at least two operational states. An actuator is included that is configured to change the operational state of the dock component in response to an activation signal. A mobile remote control is configured to generate the activation signal to cause the actuator to change the operational state of the dock component and at least one predefined non-activation zone is included such that changing of operational state of the dock component is inhibited when the mobile remote control is located within the at least one predefined non-activation zone.

20 Claims, 12 Drawing Sheets



US 8,497,761 B2

Page 2

U.S. PATENT DOCUMENTS

5,789,887	A	8/1998	Elischewski	
5,831,540	A	11/1998	Sullivan et al.	
6,049,448	A	4/2000	Lanigan et al.	
6,065,172	A	5/2000	Swessel	
6,082,433	A	7/2000	Vafaie et al.	
6,181,095	B1*	1/2001	Telmet	318/480
6,236,911	B1	5/2001	Kruger	
6,240,335	B1	5/2001	Wehrung et al.	
6,276,744	B1	8/2001	Huber et al.	
6,312,214	B1	11/2001	Nowak et al.	
6,317,025	B1	11/2001	Leon et al.	
6,326,751	B1	12/2001	Mullet et al.	
6,326,754	B1	12/2001	Mullet et al.	
6,329,931	B1	12/2001	Gunton	
6,344,642	B1	2/2002	Agam et al.	
6,385,537	B2	5/2002	Gaspard, II	
6,437,702	B1	8/2002	Ragland et al.	
6,468,021	B1	10/2002	Bonora et al.	
6,481,558	B1	11/2002	Bonora et al.	
6,490,443	B1	12/2002	Freeny, Jr.	
6,542,076	B1	4/2003	Joao	
6,542,077	B2	4/2003	Joao	
6,549,130	B1	4/2003	Joao	
6,563,430	B1*	5/2003	Kemink et al.	340/825.49
6,611,755	B1	8/2003	Coffee et al.	

6,634,408	B2	10/2003	Mays	
6,661,350	B1	12/2003	Rohrberg et al.	
6,678,999	B2	1/2004	Zengguang et al.	
6,687,609	B2	2/2004	Hsiao et al.	
6,779,581	B2	8/2004	Towley	
6,975,226	B2*	12/2005	Reynard et al.	340/540
7,119,673	B2	10/2006	Eager et al.	
2002/0164158	A1*	11/2002	Hoermann	388/835
2002/0178385	A1	11/2002	Dent et al.	
2002/0183008	A1	12/2002	Menard et al.	
2003/0024998	A1*	2/2003	Pierce	239/172
2003/0043021	A1	3/2003	Chung	
2003/0160681	A1	8/2003	Menard et al.	
2003/0199996	A1	10/2003	Reynard et al.	
2004/0056089	A1*	3/2004	Larson et al.	235/382
2004/0201277	A1	10/2004	Hentsch et al.	
2005/0024183	A1*	2/2005	Carter et al.	340/5.61
2005/0102042	A1*	5/2005	Reynard et al.	700/17
2006/0132284	A1	6/2006	Murphy et al.	

FOREIGN PATENT DOCUMENTS

WO	0235036	A1	5/2002
WO	2004068772	A2	8/2004
WO	2007024772	A2	3/2007

* cited by examiner

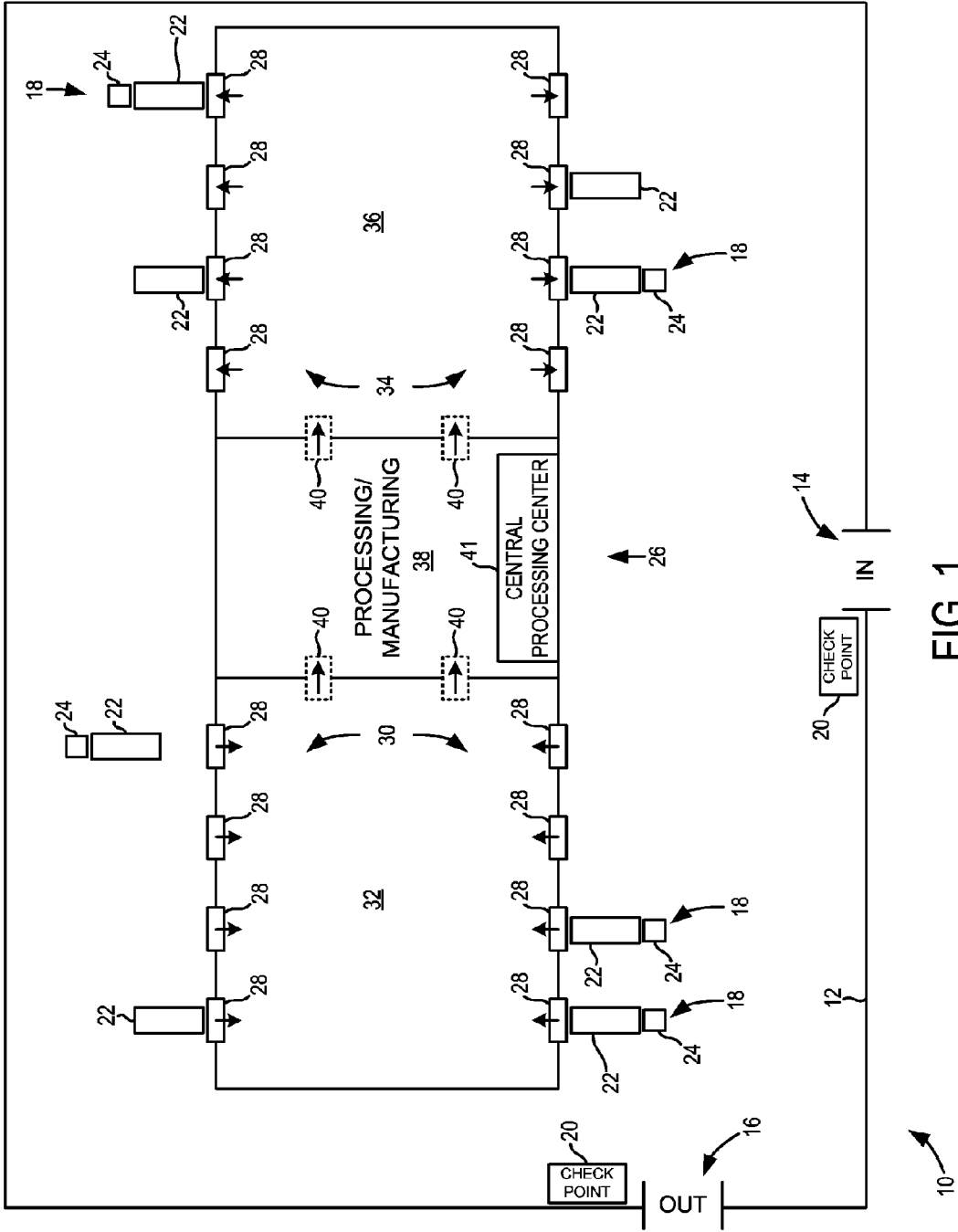


FIG. 1

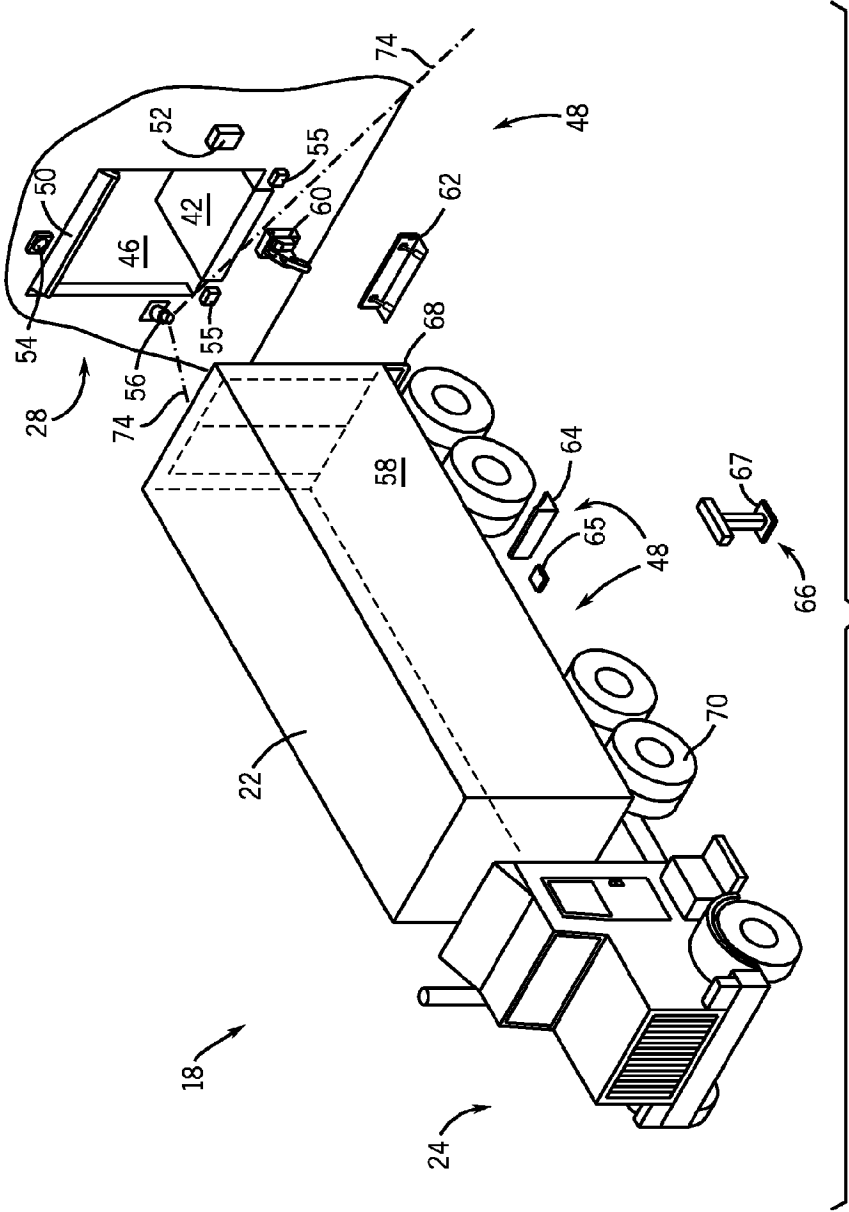


FIG. 2

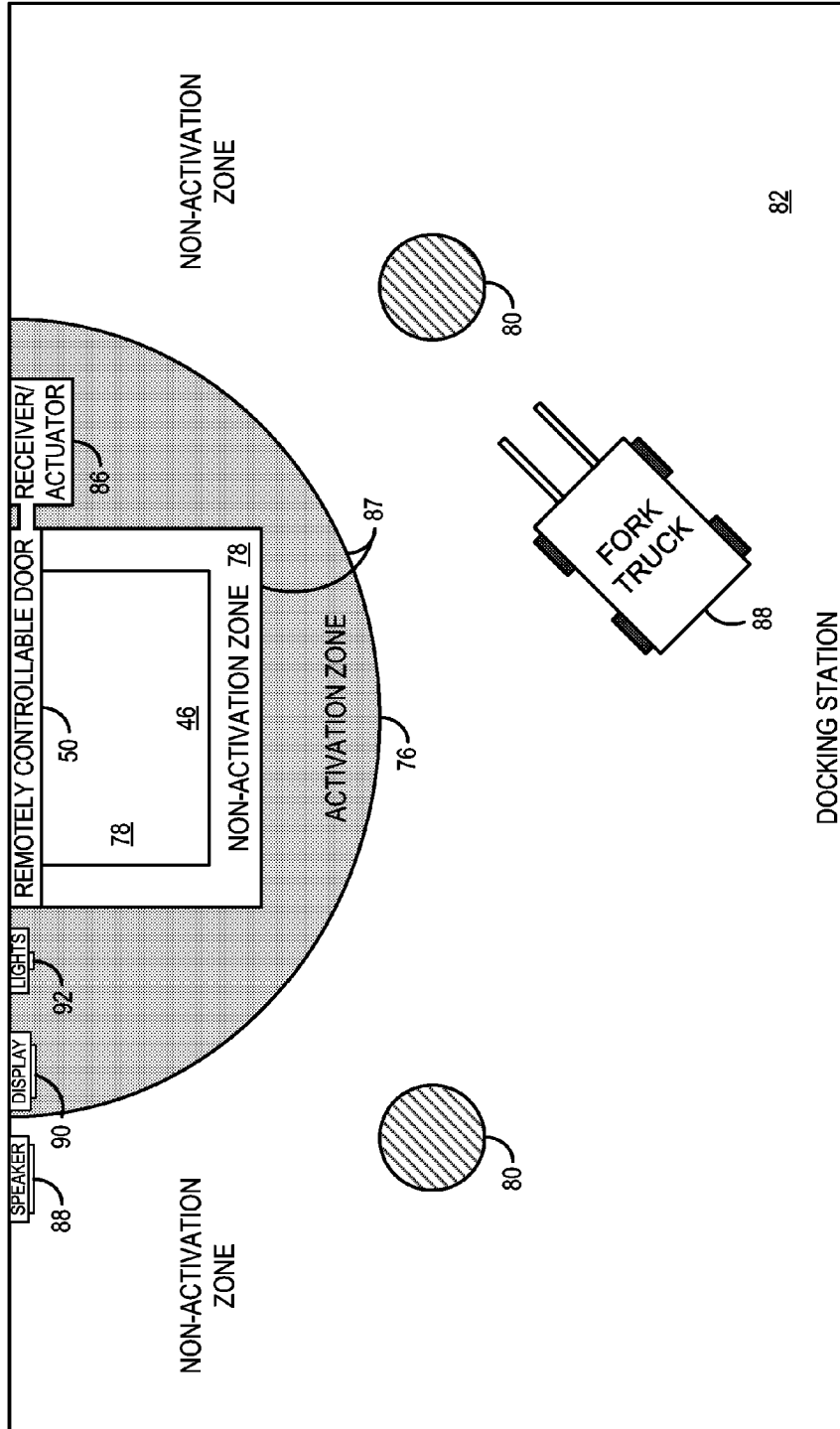


FIG. 3

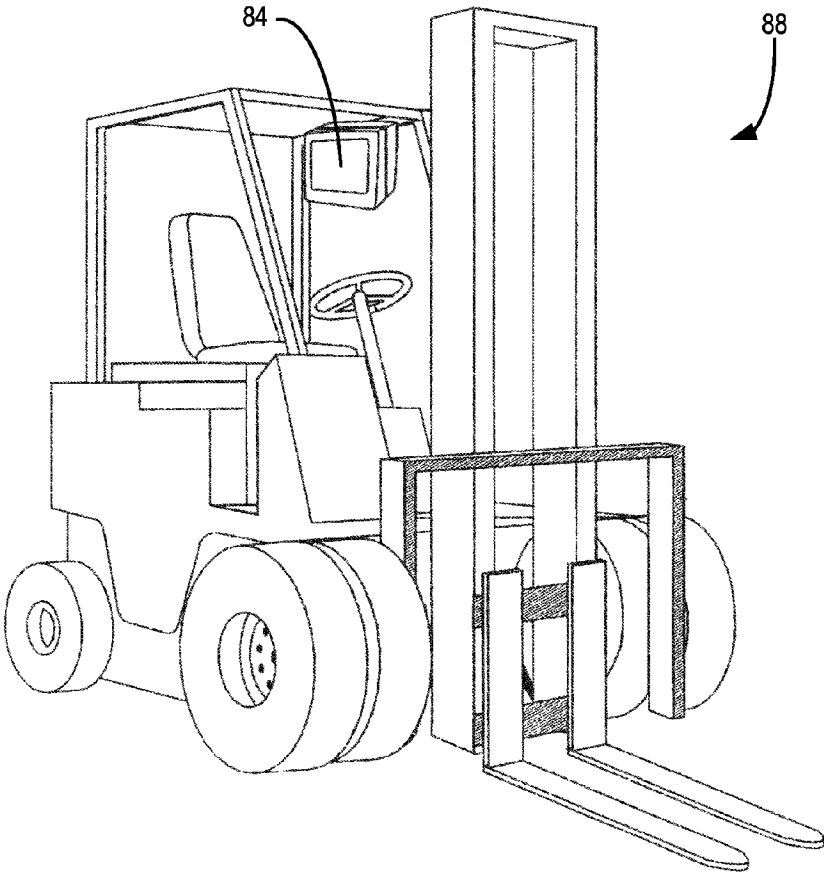


FIG. 4

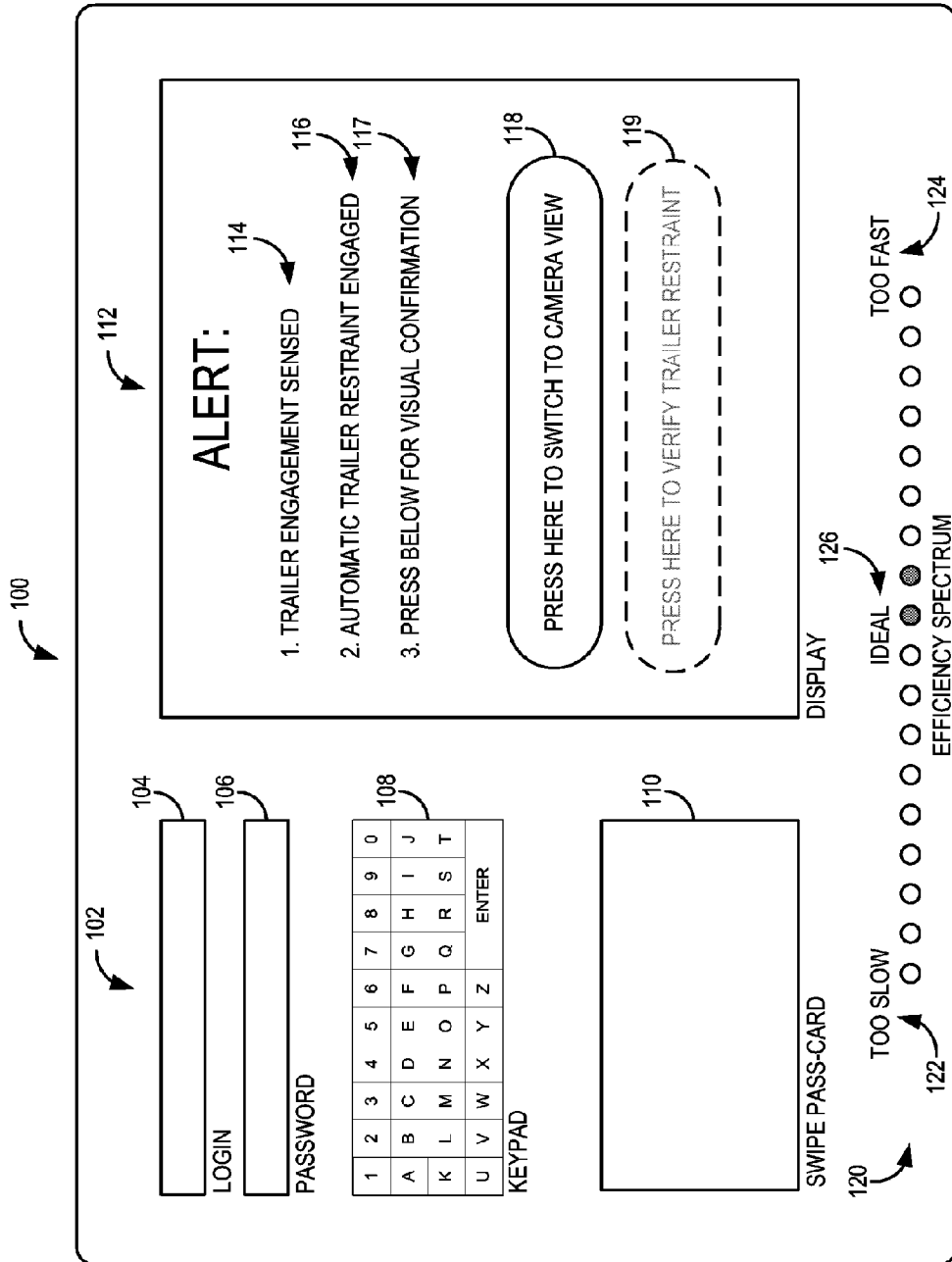


FIG. 5

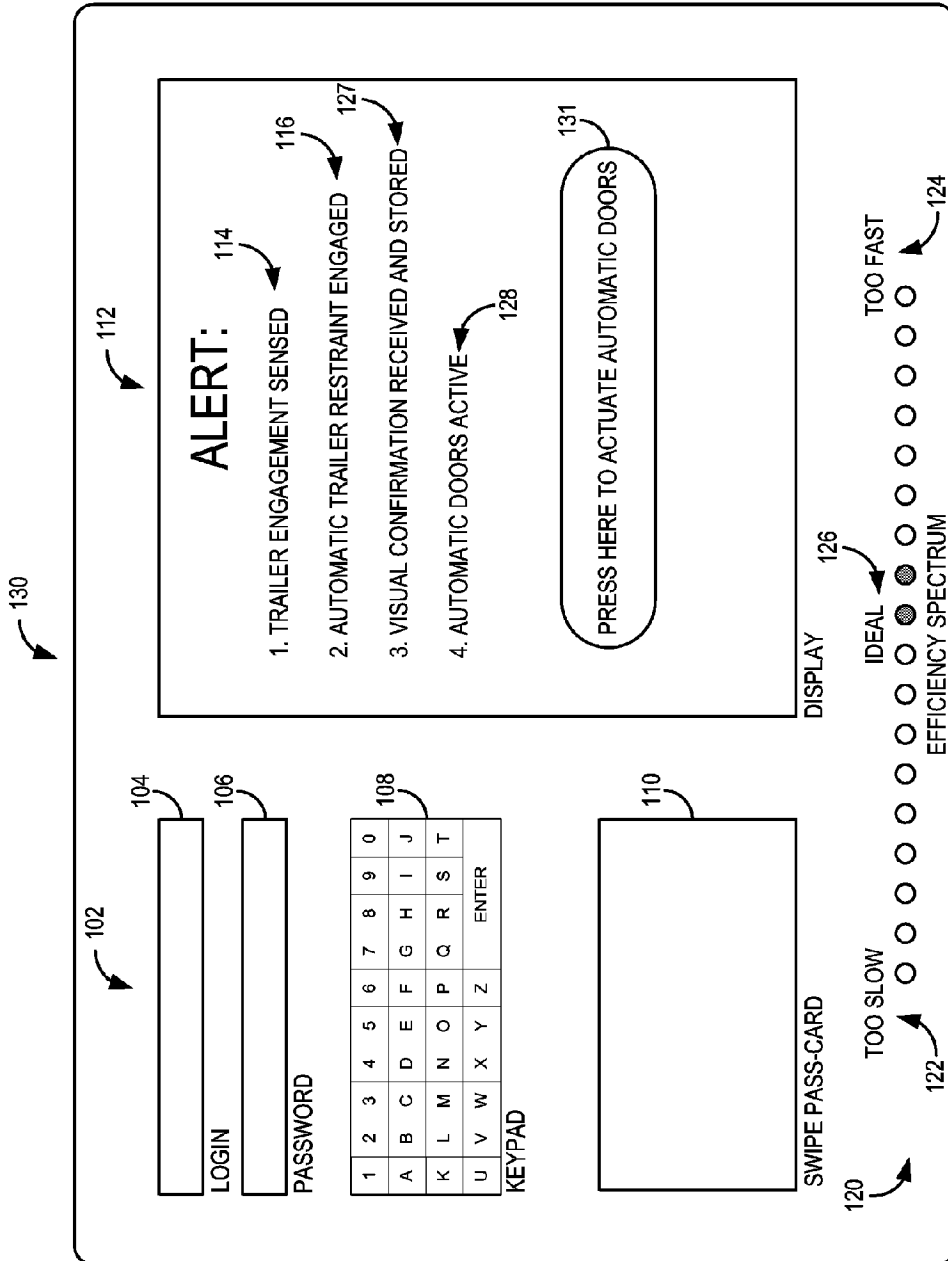


FIG. 6

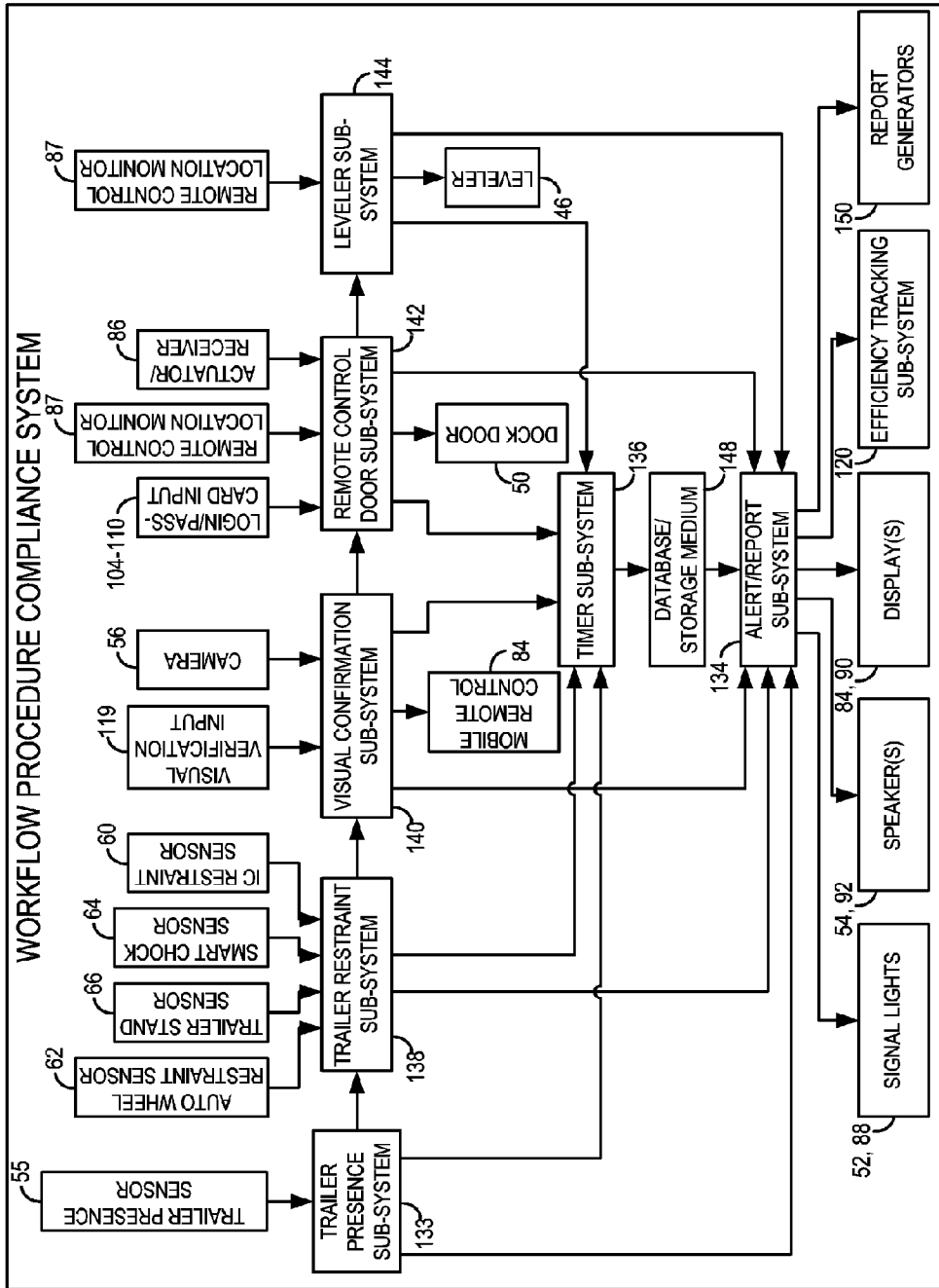
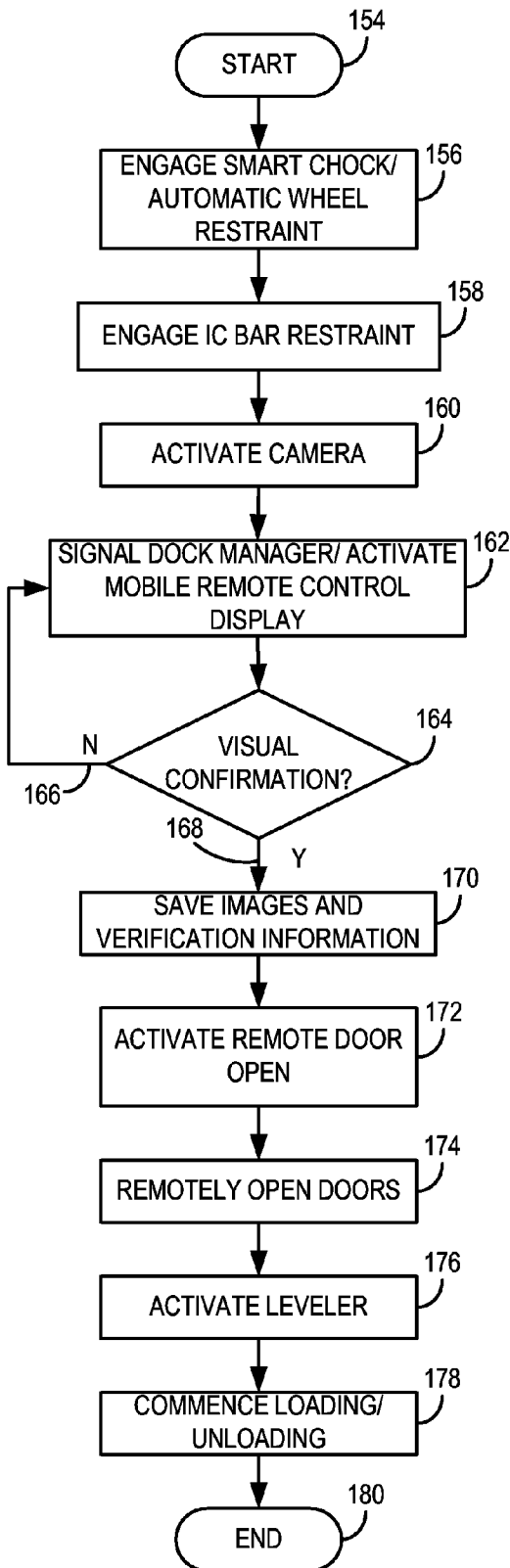
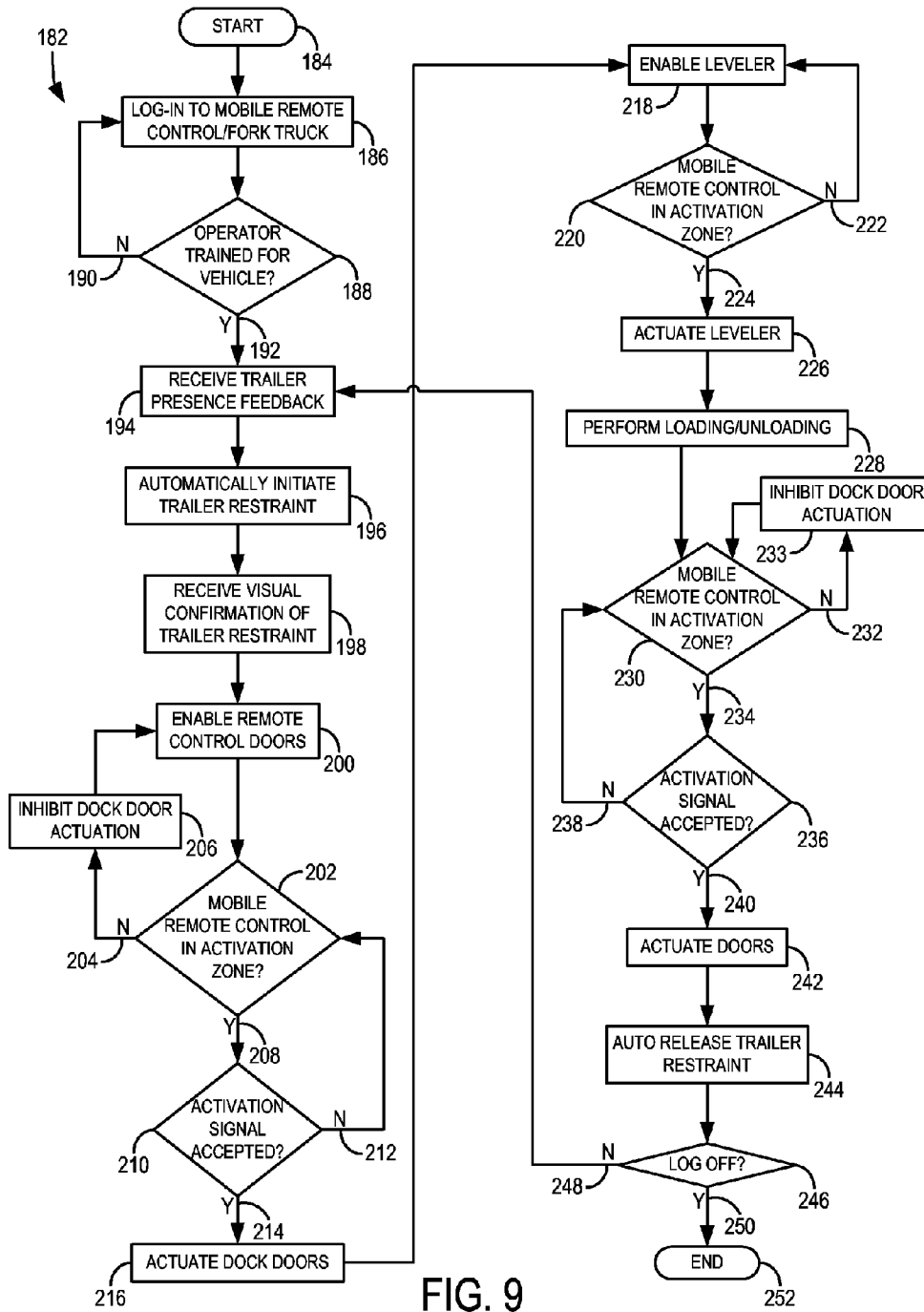


FIG. 7

FIG. 8



152



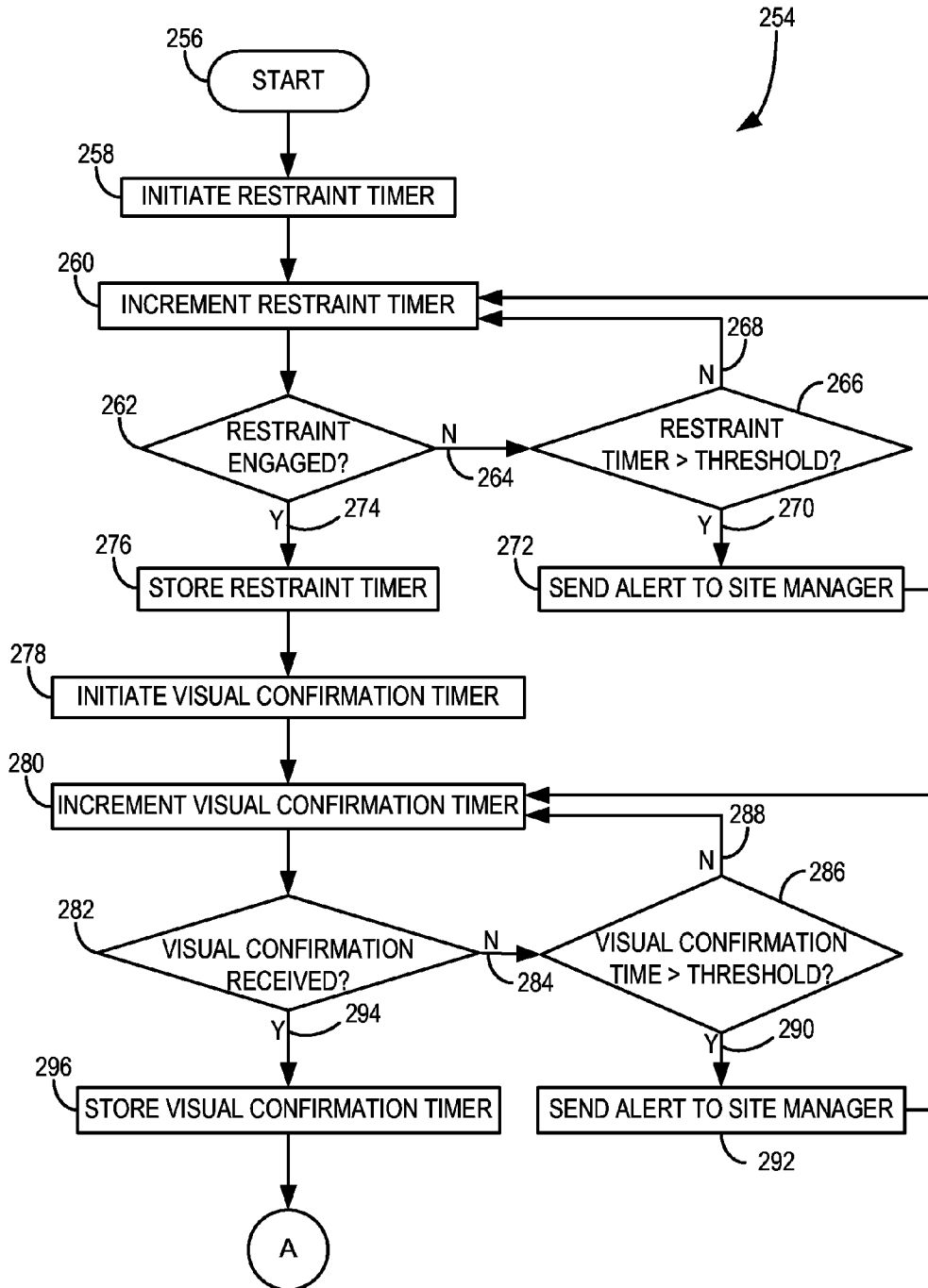


FIG. 10

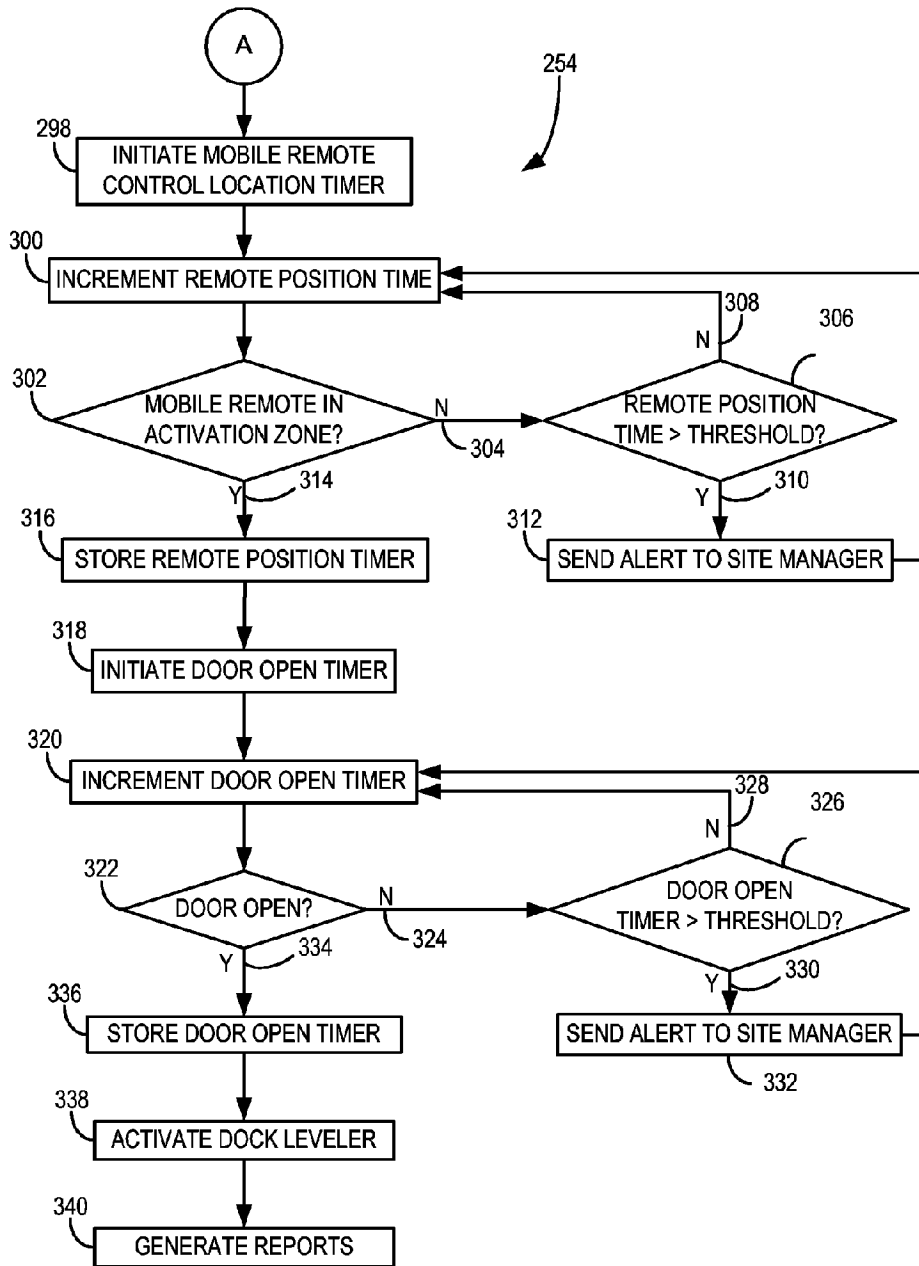


FIG. 11

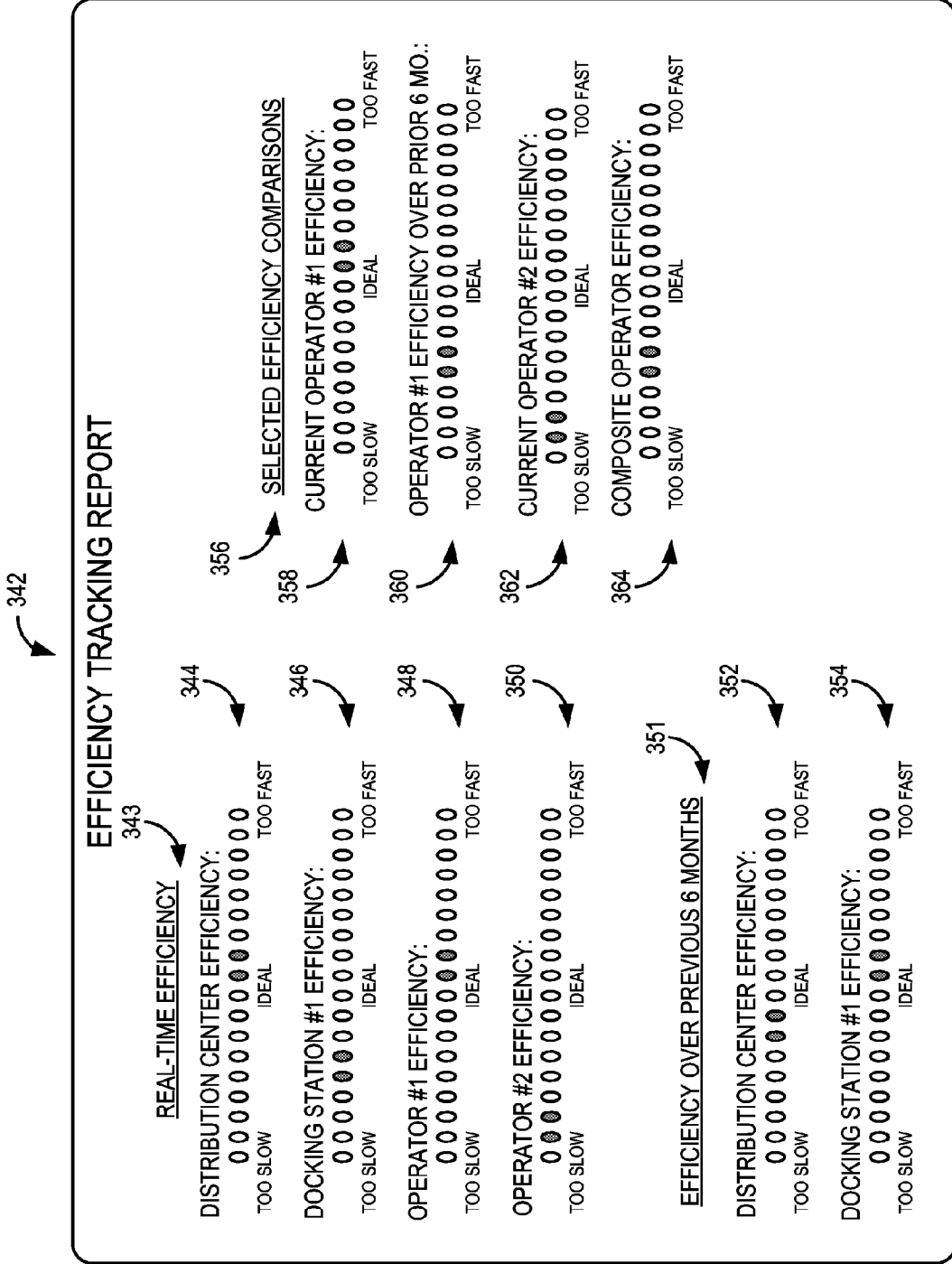


FIG. 12

1

SYSTEM AND METHOD FOR REMOTELY CONTROLLING DOCKING STATION COMPONENTS

BACKGROUND OF THE INVENTION

The present invention relates generally to distribution centers and, more particularly, to a system and method for remotely controlling docking station doors of such facilities. A mobile remote control is configured to generate an activation signal that causes an actuator to enable actuation of the docking station doors and other associated docking equipment only when the mobile remote control is located within a predetermined activation zone.

Numerous facets of commercial enterprises utilize distribution, processing, and manufacturing centers for a variety of purposes. For example, distribution centers are often used to receive, process, and re-ship packages and parcels. On the other hand, manufacturing environments require the delivery of consumable materials and the shipment of finished products and, as such, often include distribution centers in close proximity to manufacturing facilities.

Regardless of the application, these distribution centers typically include at least one docking station configured to receive a trailer for delivery and shipment. Another commonality of these distribution centers is that each docking station generally includes various components to permit and restrict access to and from the distribution via the docking station. For example, the doors are designed to lower the probability of unauthorized entry to the distribution center via the docking station as well as the potential for accidents resulting from an open docking station.

To this end, docking station component manufacturers have developed docking station protocols that dictate that the components of a given docking station remain in a given state until a trailer has been positioned at the docking station and verified as present and ready to be serviced. However, while docking station component manufacturers encourage distribution centers to strictly implement such protocols, manufacturers have little control over the actual use of the docking station components following installation. Furthermore, although a distribution center may mandate the suggested protocol for operation of the docking station components, in practice, operators may fail to follow protocol.

Additionally, there is an ever increasing pressure to increase the efficiency of distribution, processing, and manufacturing centers. In order to expedite the receipt and departure of goods from a distribution, processing, or manufacturing center, docking station operators may inadvertently fail to follow operational protocol or may be inclined to "shortcut" aspects of operational protocol. For example, during peak operation of a docking station, the departure of one trailer may be immediately followed by the arrival of another trailer. As such, an operator may be inclined to allow the docking station doors to remain in an open position while the first trailer leaves the docking station and the second trailer arrives at the docking station. As such, the potential for an incident is increased because of a deviation from operational protocol, which may desirably mandate that the doors be closed before a trailer departs from a docking station and remain closed until a subsequent trailer is positioned at and/or secured with the docking station and verified as such.

It would therefore be desirable to have a system and method for controlling the operation of docking station components so as to promote adherence to operational protocol and lower the potential for incidents. Furthermore, it would

2

be advantageous that such a system and method increase the operational efficiency of the docking station.

BRIEF DESCRIPTION OF THE INVENTION

The present invention is directed to a system and method for controlling docking station doors that overcomes the aforementioned drawbacks. Specifically, a mobile remote control is configured to be associated with a docking station operator. The mobile remote control is configured to generate an activation signal that causes an actuator to actuate the docking station doors only when the mobile remote control is located within a pre-designated activation zone.

In accordance with one aspect of the invention, a loading dock remote control system is disclosed that includes a facility having at least one dock station for exchanging materials and a dock component configured to operate in at least two operational states. An actuator is included in the loading dock remote control system that is configured to change the operational state of the dock component in response to an activation signal and a mobile remote control is configured to generate the activation signal to cause the actuator to change the operational state of the dock component. The loading dock remote control system also includes at least one predefined non-activation zone wherein changing operational states of the dock component is inhibited when the mobile remote control is located within the at least one predefined non-activation zone.

In accordance with another aspect of the invention, a method of remotely controlling loading dock doors is disclosed that includes receiving a trailer at a docking station having a remotely controllable dock component and enabling remote activation of the remotely controllable dock component. The method also includes disabling remote activation of the remotely controllable dock component if an operator is located other than in a pre-designated activation zone.

In accordance with yet another aspect of the invention, a loading dock component remote control system is disclosed that includes a facility having a plurality of trailer positions, each trailer position having a dock thereat and a dock component positioned at each dock and configured to be activated permit and restrict access to and from the distribution center from the dock. The loading dock component remote control system also includes an actuator configured to actuate the dock component and a receiver configured to cause the actuator to actuate the dock component in response to an activation signal. Also, the loading dock component remote control system includes a mobile remote control configured to generate the activation signal and having an operable range about the receiver and at least one predefined non-activation zone within the operable range, wherein actuation of the dock component is disabled if the mobile remote control is located within the at least one non-activation zone.

Various other features and advantages of the present invention will be made apparent from the following detailed description and the drawings.

BRIEF DESCRIPTION OF THE DRAWINGS

The drawings illustrate one preferred embodiment presently contemplated for carrying out the invention.

In the drawings:

FIG. 1 is a plan view of an exemplary distribution/processing/manufacturing center incorporating the present invention.

3

FIG. 2 is a perspective view of a tractor/trailer and an associated docking station of the distribution/processing/manufacturing center shown in FIG. 1 having a plurality of dock components.

FIG. 3 is a plan view of a docking station having remotely controllable components in accordance with one embodiment of the present invention.

FIG. 4 is a fork truck including an interactive display in accordance with one embodiment of the present invention and configured for use with the remotely controllable components of FIG. 3.

FIG. 5 is a graphical user interface configured for operator control of the docking station of FIG. 2.

FIG. 6 is another graphical user interface configured for operator control of the docking station of FIG. 2.

FIG. 7 is a schematic overview of a workflow procedure compliance system for the docking station of FIG. 2.

FIG. 8 is a flow chart illustrating the steps for mandating an approved workflow protocol for operation of the docking station of FIG. 2 with the workflow procedure compliance system of FIG. 7.

FIG. 9 is a flow chart illustrating the detailed steps of operation of the docking station of FIG. 2 with the workflow procedure compliance system of FIG. 7.

FIG. 10 is a flow chart illustrating the steps for operating an efficiency tracking system to track operation of the docking station of FIG. 2 with the workflow procedure compliance system of FIG. 7.

FIG. 11 is a flow chart continuing from FIG. 10 and illustrating the steps for operating an efficiency tracking system to track operation of the docking station of FIG. 2 with the workflow procedure compliance system of FIG. 7.

FIG. 12 is an illustration of an efficiency tracking report as generated according to the operation of efficiency tracking system of FIG. 11.

DETAILED DESCRIPTION OF THE PREFERRED EMBODIMENT

In one embodiment, the present invention provides a system and method to remotely control the operation of docking station doors. A mobile remote control is configured to be associated with a docking station operator. The mobile remote control is configured to generate a signal configured to allow actuation and control of various docking station components only when the mobile remote control is located within a predefined activation zone. Should the mobile remote control be located in a predefined non-activation zone, the docking station components may be inhibited from operation. The hardware and software that provides for this functionality may also advantageously be used in conjunction with establishing and requiring adherence to an operational protocol intended to improve safety and efficiency of docking station operation.

An exemplary distribution/processing/manufacturing center 10 is shown in FIG. 1. That is, the exemplary center 10 may, for example, be configured as a distribution center, a processing center, a manufacturing center, or any other center that includes docking stations. Optionally, the distribution center 10 can include an enclosure 12 extending thereabout to enclose the distribution center 10 and provide security. The enclosure 12 can include an entrance gate 14 and an exit gate 16. Alternatively, it is understood that the optional enclosure 12 could be provided with a single gate constructed to allow bi-directional passage of a plurality of tractor/trailers 18 therethrough for admittance and departure from the distribution center 10. A terminal checkpoint 20 may also be provided

4

at the entrance gate 14 and the exit gate 16 and may be attended by facility personnel to verify arrival or departure of tractor/trailers 18.

Each tractor/trailer combination 18 includes a trailer 22 that is separable from a tractor 24 connected thereto. These vehicles are commonly referred to as semi-trucks and semi-trailers, respectively, and will be discussed further below with respect to FIG. 2. However, it is understood that a tractor/trailer combination, as used herein, can include an integral unit, such as that known generally as straight trucks. That is, the present invention is not limited to use by only tractor/trailers, but may be used in any distribution-type center with any type of movable carrier including straight-trucks, vans, and the like.

A facility 26, for example a facility that performs shipping/receiving, includes a plurality of docking stations 28 wherein each docking station 28 is constructed to allow loading and unloading of materials thereat. The exemplary facility 26 includes a first group 30 of docking stations 28 positioned proximate to a consumable staging area 32 to receive and store materials delivered to the facility 26 to be consumed, or used, in manufacturing or processing procedure and a second group 34 of docking stations 28 that is positioned proximate to a product staging area 36 and are constructed to allow the loading of product into trailers 22. A processing area 38 is positioned between the consumable staging area 32 and the product staging area 36 and has a plurality of passageways 40 extending therebetween. As will be described, the facility 26 may include a central processing center 41 to coordinate operations at the docking stations 28. The central processing center 41 is illustrated as being integrated within the facility 26, however, it is contemplated that the central processing center 41 will not be limited by location and may be located virtually anywhere. The central processing center 41 may be operated by a manager or coordinator who reviews feedback from components and/or operators located at the docking stations 28. The operator, with the aid of the central processing center 41, may process the feedback and directs/coordinates operations within the facility 26 to ensure efficient operations and that proper workflow protocol is followed. Additionally or alternatively, the central processing center 41 may include automated processing systems configured to receive the feedback and automatically respond thereto. Furthermore, as will be described, the central processing center 41, whether through automated processing systems or operator direction, may be utilized to generate/compile reports, alerts, and notices regarding operations within the facility 26.

Although exemplary, it should be understood that such a layout achieves efficient and separable material flow between consumable delivery and processed product. It is additionally understood that, although the facility 26 has a plurality of docking stations 28, space and financial limitations may limit the number and type of docking stations a facility may have. A facility having only one docking station can achieve benefits from the present invention.

Referring to FIG. 2, each docking station 28 is preferably equipped with a plurality of components that can include a dock leveler 42, a restraint system 48, a dock door 50, a traffic signal 52, a loud speaker 54, trailer presence sensors 55, a camera 56, and the like. However, based on specific needs, one skilled in the art will understand not all need be so equipped, but would still be encompassed in such a system. For example, some docking stations 28 may include extendable belt or roller loader conveyers.

As will be described in detail with respect to FIGS. 3-6, some or all of the components, for example, the dock door 50 is configured to be remotely actuated. As used herein, "dock

5

door” is used to refer to a door or other barriers or restraints to entrance or egress to and from a docking station. For example, “dock door” may include restraints or barriers such as a Safe-T-Gate™ safety barrier or Dok-Guardian™ safety barrier. Safe-T-Gate™ and Dok-Guardian™ are trademarks owned by Rite-Hite® Corporation of Milwaukee, Wis. Rite-Hite® is a registered trademark of Rite-Hite® Corporation of Milwaukee, Wis. Furthermore, the components of the docking station **28** may include non-electrically powered components and/or may include electrically powered components that are adapted to be activated or engaged remotely. The dock leveler **42** is constructed to operatively engage a bed **58** of trailer **22** and allow the passage of lift trucks, personnel, or the like into and out of the trailer **22**. The restraint system **48** is constructed to engage and secure trailer **22** to facility **26** proximate to docking station **28**.

The restraint system **48** may include multiple means of restraint. As shown, the restraint system **48** can include an ICC bar or Rear Impact Guard (RIG) dependent restraint **60**, a wheel lock **62**, a wheel chock system **64**, and a trailer stand system **66**. It is recognized that any particular system may include any one or all of the specific components of the restraint system **48** or other similar systems of restraining the trailer **22**. When the trailer **22** is present at the docking station **28**, the ICC bar restraint **60** engages an ICC bar **68** of the trailer **22** to secure the trailer **22** against unauthorized removal from the docking station **28**. Additionally, or alternatively, the wheel lock engages a wheel **70** of the trailer **22** so as to preclude movement of the trailer away from the docking station **28**. A wheel chock **64** could be used to secure the wheel **70** of the trailer **22** against movement in a manner similar to the wheel lock **62**. In one embodiment, the chock **64** incorporates a sensor **65** configured to detect proper engagement with the wheel **70** of the trailer to provide feedback regarding proper engagement. Additionally, if the trailer **22** is removed from the tractor **24**, a trailer stand **66** may be used that includes a trailer stand sensor **67**. The trailer stand sensor **67** is configured to sense whether the trailer stand is properly engaged and supporting the trailer **22** and, as will be described, is configured to send feedback regarding such. It is understood that the trailer restraint system **48** may include any or all of the aforementioned devices. Additionally, the trailer restraint system **48** may include other trailer restraining or warning systems.

As will be described in detail below, the signal lights **52**, the speaker **54**, and the camera **56** together with the remaining components and mobile remote control system are configured to facilitate an approved workflow procedure so as to enforce workflow protocol. Specifically, the camera **56** is configured and positioned with sightlines **74** so as to acquire images, both video and still, that can be reviewed to verify proper trailer engagement and restraint by the restraint system **48**. The specific positioning shown is merely exemplary. Additionally, the speaker **54** and signal lights **52** are configured to convey information to operators exterior to the docking station **28**. For example, the speaker **54** may communicate audible alerts or reports regarding workflow procedures and whether approved workflow protocol is being properly followed. Additionally, the signal light **52** may be configured to be remotely controlled to communicate proper engagement/disengagement of the restraint system **48** to individuals exterior to the docking station **28**.

Referring now to FIGS. **3** and **4**, a system for remote actuation of a docking station component is shown. For exemplary purposes, FIGS. **3** and **4** will be described with respect to remote actuation of the dock door **50** of FIG. **2**. However, such description is for exemplary purposes only and it is

6

contemplated that any docking station component may be controlled in a similar manner. Therefore, while FIGS. **3** and **4** describe a system for controlling the dock door, it is equally contemplated that the described system may be utilized to control any component of the docking station or facility housing the docking station to enhance productivity and efficiency while reducing the potential for undesired incidents.

Within the docking station **28** are a plurality of zones including at least one “activation zone” **76**, one “non-activation zone” **78**, and a plurality of optional “hot spots” **80** strategically positioned throughout the remaining area of the docking station **28**, which also preferably functions as an activation zone. That is, the “hot spots” **80** operate as activation zones disposed within the remainder of the docking station, which operates as a non-activation zone **82**. The zones define areas such that allow and restrain operation and/or control of a desired component of the docking station **28**. Again, for exemplary purposes, operation and control of a dock door will be described. As such, the zones **76-82** will be described as defining areas that serve to allow and restrain remote opening and closing of a given dock door by a mobile remote control **84**.

When the mobile remote control **84** is located within the activation zones **76, 80**, the dock door **50** functions as a remotely controllable door and may be remotely actuated by transmitting an activation signal from the mobile remote control to an actuator/receiver **86** configured to open the dock door **50**. On the other hand, should the mobile remote control be moved from a designated activation zone **76, 80** to a non-activation zone, **78, 82**, the dock door **50** is inhibited from operation.

It is contemplated that dock door actuation may be enabled or inhibited based on the location of the mobile remote control **84**. Additionally, it is contemplated that dock door actuation may be enabled or inhibited based on the location of the operator assigned to operate the docking station **28**. That is, it is contemplated that operators may be required to carry electronic identification at all times while operating the docking station **28**. Accordingly, the electronic identification may be tracked to determine operator location with respect to the activation zones **76, 80** and non-activation zones **78, 82**. Further, it is contemplated that a combination of both location tracking techniques may be utilized so that both the mobile remote control **84** and the operator assigned to use the mobile remote control **84** must be located in an activation zone **76, 80** in order to actuate the dock door **50**.

As will be described, the system may be configured to restrict control of the docking station components, for example the dock door **50**, to a particular authorized user, fork truck, or the like. For example, the activation signal may be specific to a particular user identification, a fork truck identification, and/or a floating hybrid of identifiers, such as a class of operators or users. Accordingly, only an authorized activation signal will be accepted and allow remote component control. For example, a particular user or fork truck may be assigned to a particular docking station and be permitted to control components of the particular docking station, for example, the door. Additionally or alternatively, operation of a component may be restricted to a user or fork truck that originally initiated operation of the component. Specifically, for example, when a given user or fork truck opens a particular dock door, only an activation signal from that given user or fork truck may be accepted to close the particular dock door.

Additionally, it is contemplated that the dock door **50** may be inhibited or precluded from opening in a number of manners. Specifically, the mobile remote control **84** may be configured to identify whether its present location is outside one

of the activation zones **78**, **82** and, if so, operate to not generate an activation signal to actuate the dock door **50**. In this case, once the mobile remote control **84** is returned to an activation zone **76**, **80**, the mobile remote control **84** will then generate an activation signal upon such prompting. Alternatively, the mobile remote control **84** may be configured to generate an activation signal regardless of locality. In this case, when the activation signal is received a determination is made to check the current location of the mobile remote control **84**. If the mobile remote control is located in an activation zone **76**, **80**, the dock door adheres to the activation signal and activates. However, if the mobile remote control **84** is outside an activation zone **76**, **80**, the activation signal is ignored and the door is precluded/inhibited from opening until an activation signal that is subsequently determined to have been generated from within an activation zone **76**, **80** is received.

It is contemplated that the activation zones **76**, **80** and the non-activation zones **78**, **82** be strategically designated to facilitate mandating approved workflow procedures for optimal safety and efficiency. For example, it is contemplated that a non-activation zone **78** be designated so as to preclude actuation of the dock door **50** when the mobile remote control **84** is located in proximity to the dock leveler **46**. In this regard, an operator is precluded from being positioned too closely to the either the leveler **46** or the dock door **50** during actuation of the dock door **50**. It is also contemplated that while the operator is precluded from actuation while in close proximity to the dock leveler **46** and dock door **50**, the operator is also precluded from actuating the dock door **50** when the mobile remote control **84** is located too far from the dock door **50**. Specifically, although it is contemplated that the activation signal generated by the mobile remote control **84** may be of sufficient strength to reach the actuator/receiver **86**, actuation of the dock door **50** is precluded when in a non-activation zone **82** spanning the remainder of the docking station **28**. Accordingly, the operator is precluded from actuating the dock door **50** when at a distance too great for visual verification, as required under approved workflow protocol. By requiring the operator to be within a given proximity of the dock door **50** before actuation, the operator can visually verify safety conditions surrounding the dock door **50** prior to actuation.

As will be further described, the system can be advantageously used in a variety of ways to allow/prevent a user, fork truck, and/or class of users, from performing a loading or unloading operation until the steps of the protocol have been satisfied. It is contemplated that the system can be utilized with both electrically powered components and/or non-electrically powered components. For example, some components may be activated and/or actuated by electrical power. Furthermore, some components may include sensors configured to operate with a powered interlock but be manually actuated once the power interlock is disengaged. It is contemplated that any given facility may include virtually any combination of electrically powered components and/or non-electrically powered components. That is, the described systems and techniques may be configured to operate with any combination of electrically powered component as well as non-electrically powered components.

In the case of non-electrically powered components, once the presence of a particular user or fork truck has been identified, the system may be adapted to send feedback to a centralized processing center to alert a supervisor or manager. In response to the feedback, the supervisor or manager may transmit instructions to guide a dock worker through the approved workflow protocol. Such transmission could be a

step-by-step transmission of the protocol or a batch transmission of all of the steps. Further, the transmission could be automated, as opposed to supervisor or manager-initiated. As such, should the dock worker stray from the approved workflow protocol or delays in performing the steps of the approved workflow protocol, an alert or warning may sound. As will be described, this alert or warning may be transmitted to the dock worker or back to the supervisor, manager, or central processing center and/or be recorded for later review. As a further example, in the case of electrically powered components, as previously described, the components may be configured to only respond to signals from a given remote control. Again, the remote control may be carried by the operator, integrated in a fork truck, or located at a designated position in the facility. In any case, the remote control or control box may be configured to operate according to the approved workflow protocol and only respond to authorized users or classes of users.

The activation zones **76**, **80** and non-activation zones **78**, **82** are defined and controlled by way of a boundary **87** to facilitate monitoring. The boundary can be controlled by an inductor coil boundary monitoring system, an infrared (IR) sensor boundary monitoring system, a laser boundary monitoring system, a radar boundary monitoring system, or any other type of boundary-monitoring system. As an example, during construction of the docking station **28**, an inductor coil may be disposed within the floor of the docking station **28** so as to form a perimeter that, when energized, is electrically detectable. Accordingly, the mobile remote control **84** can determine position by tracking locality with respect to the induction coil. Alternatively, or to facilitate retrofitting of the present invention to existing docking stations **28**, an infrared sensor monitored boundary, a laser monitored boundary, a radio frequency (RF) sensor monitored boundary, a global positioning system (GPS) monitored boundary, or a radar monitored boundary may be utilized to provide sufficient zone and boundary definition.

As shown in FIG. **4**, the mobile remote control **84** may be configured to be mounted to or in a vehicle intended to facilitate exchanging materials. For example, a fork truck or forklift **88** or other similar vehicle that is designed to facilitate loading and unloading of trailers or to convey personnel through the facility. Alternatively, it may be a personal wearable device (PWD) that is specific to each worker, versus specific to a device. In the embodiment shown in FIG. **4**, the mobile remote control **84** is mounted to the fork truck **88** in a manner so as to be readily available to the operator, but not interfere with operation or visibility while operating the fork truck. As illustrated in FIG. **4**, the mobile remote control **84** may be a small computer that includes a touch screen configured to display information regarding workflow protocol and receive feedback from the operator. As previously suggested, the mobile remote control **84** may be an autonomous unit so as to be portably carried by an individual operator. For example, it is contemplated that the mobile remote control may be similar to a personal digital assistant (PDA), PWD, or laptop computer system.

In any case, as will be described with respect to FIGS. **5** and **6**, the mobile remote control **84** may be configured to actuate the dock door **50** remotely, but also provide additional functionality such as to provide a broad spectrum of information to the operator. However, referring to FIG. **3**, should the mobile remote control **84** be streamlined such that only actuation of the dock door **50** door is supported, it is contemplated that additional lights **88**, a display **90**, and a speaker **92** may be included to communicate information to operators of the docking station **28**.

Referring now to FIG. 5, a graphical user interface (GUI) **100** is shown. The GUI **100** is designed to be displayed on the mobile remote control **84** of FIG. 4. The GUI **100** includes a plurality of sections designed to receive and communicate a variety of information to and from an operator. Specifically, the GUI **100** includes a login section **102** configured to receive identifying information from an operator. As shown, the login section **102** includes a login entry dialog box **104**, a password entry dialog box **106**, and a keypad **108** for entering a username and password. Additionally or alternatively, a “swipe” or pass-card pad **110** can be included whereby the operator can use an electronic identification card (not shown) to “login” by passing the electronic identification card in close proximity to the reader **110**. The mobile remote control **84** electronically detects the unique electronic identifier of the electronic identification card and logs the operator into the mobile remote control.

In accordance with one embodiment of the invention, entry of a login and password or electronic identification of the operator via electronic identification card or swipe card is required to use the mobile remote control. By requiring a login and password the mobile remote control can tailor the activation signal generated to actuate the dock door remotely to the specific operator. Additionally, once an operator is logged in, the component monitoring system, as will be described, can track that operator and configure that mobile remote control to operate only one particular dock door designated to that operator. As such, the system can be configured such that only one mobile remote control is enabled to actuate a given dock door and further require the operator to logout before another operator can actuate a given dock door.

The GUI **100** also includes a display section **112** configured to display alerts, reports, and other information to the operator. As shown, the display section **112** can convey information to the operator regarding workflow and the present position of the operator to ensure approved workflow protocol. For example, the display section **112** may inform the operator that trailer presence has been sensed at the assigned docking station **114**, the trailer restraint has engaged the trailer **116**, and prompt the operator to activate the camera **117** disposed at the docking station to visually confirm proper engagement of the trailer restraint. Additionally, should the truck/trailer include an air ride suspension, it is contemplated that the operator may receive a notification that it has been dumped before trailer restraint is initiated by the system or an operator. Accordingly, the notification that a trailer is present and dumping has been completed will serve to indicate to the operator to initiate trailer restraint. Further still, should the truck/trailer include adjustable tandems/bogies, the operator may receive an indication that the adjustable tandems/bogies have been positioned at the fully-rearward position.

As shown, the GUI may receive input from the operator that changes the display section **112** to show the images **118**, still or video, gathered by the camera **56** of FIG. 2 and then, once the images are displayed the operator may provide feedback by pressing a restraint verification button **119** to indicate that the operator has visually verified proper restraint of the trailer against movement away from the docking station. The operator cannot provide visual verification feedback until the display section **112** is switched to display the camera images of the trailer restraint system. While this feature is illustrated by a dashed restraint verification button **119**, the button might be grayed-out, colored, shaded, or flashing until pressed.

It is contemplated that the system may be configured to bypass use of the trailer restraint system if deemed necessary and if within the approved workflow protocol. That is, should a trailer arrive that is incompatible with a particular trailer

restraint, for example an ICC bar restraint, the operator may be able to indicate such and allow an alternative restraint mechanism, such as a chock, to be utilized. In such a case, the operator may indicate that a particular restraint could not be properly engaged. The operator may then, if compatible with the approved workflow, override the fault condition or indicate that an alternative restraint was utilized.

Additionally, the GUI **100** includes an efficiency spectrum display **120**. As will be described, an efficiency tracking system is included that periodically, or in real-time, reviews feedback indicative of the current efficiency of the operator in completing the designated workflow protocol. The efficiency tracking system then synthesizes this feedback and transmits a status indicator to the mobile remote control to display the efficiency of the operator on the efficiency spectrum **120**. In accordance with one embodiment, the efficiency spectrum **120** includes a plurality of indicators that are labeled to range from “too slow” **122** to “too fast” **124**. The “too slow” indicator **122** is designed to indicate when the operator is performing within the workflow protocol below a proficient level and the “too fast” indicator **124** is designed to indicate when the operator is performing within the workflow protocol at a level which is outside the prescribed bounds as determined for safety and proficiency. Located between the “too slow” indicator **122** and the “too fast” indicator **124** is an “ideal” indicator **126**. Accordingly, the operator is provided with feedback regarding the operator’s own efficiency within the workflow protocol.

Additionally, it is contemplated that the operator may be permitted to suspend the workflow under some conditions. For example, should the operator identify a damaged good or pallet, the operator may indicate such through the GUI **100** and suspend timing until the condition is rectified. Accordingly, the frequency and/or duration of suspensions and corresponding causes may be recorded or tracked.

Once the operator has visually confirmed that the trailer is present and the restraint systems **48**, of FIG. 2, are properly engaged with the trailer by pressing the restraint verification button **119**, the dock doors are enabled. That is, until visual verification is received and stored, a lock-out precludes actuation of the dock door. Once the dock door is opened, or at some other time in the operational protocol, the system may be configured to monitor the frequency and duration between traversals of the fork truck or operator to and from the trailer. Furthermore, should a traversal or attempted traversal be detected prematurely within the approved workflow protocol, an alarm or alert may be indicated. This alarm or alert may be transmitted directly to the operator, to the docking station, and/or to the supervisor in the central processing center. Accordingly, such premature traversals that deviate from the approved workflow protocol may be recorded and reported. Accordingly, operators are restricted from performing loading/unloading until all pre-loading/unloading steps of the approved workflow process are complete. For example, leveler activation and/or the telescoping conveyor extension may be precluded until trailer jack engagement and confirmation is complete.

Referring to FIG. 6, another mobile remote control GUI **130** is shown following operator confirmation of proper trailer restraint. Once the operator has visually verified that the trailer is properly restrained by the trailer restraint system, the display section **112** switches back from the camera view to alert the operator that the visual confirmation was properly received and stored **127** and the doors are now active **128**. Accordingly, the GUI now includes an actuation button **131** configured to cause the mobile remote control to generate an activation signal to actuate the doors upon operator initiation.

11

Again, as previously described with respect to FIG. 3, the mobile remote control must be located in an activation zone 76, 80 for action to be uninhibited. However, as long as the mobile remote control is not located in a non-activation zone 78, 82 the activation signal is allowed to be generated by the mobile remote control, or is not blocked at the door, and the actuator/receiver 86 is allowed to open or close the dock door 50 in response.

While the aforementioned description sets forth real-time efficiency feedback, the system also includes stored and comparative feedback. That is, as will be described with respect to FIG. 12, the system can communicate a wide range of real-time and composite feedback that may be sent to an operator or other users.

Referring now to FIG. 7, a schematic overview of a workflow procedure compliance system 132 is shown. The workflow procedure compliance system 132 includes many of the systems previously described with respect to FIGS. 1-6, which operate as sub-systems of the workflow procedure compliance system 132. For example, workflow procedure compliance system 132 includes the trailer presence sensors 55, wheel restraint system 62, trailer stand system 66, smart chock system 64, ICC bar restraint system 60, visual verification input 119, camera 56, login/pass-card input 104-110, remote control location monitor 87, and actuator/receiver 86, as previously described with respect to FIGS. 2 and 5. As indicated by the directional arrows, these systems serve as inputs for the various sub-systems of the workflow procedure compliance system 132.

Specifically, the trailer presence sensors 55 serve as an input to a trailer presence sub-system 133 that is configured to monitor the feedback from the trailer presence sensors 55 to determine when a trailer is present at a particular docking station. Once the presence of the trailer is detected, the trailer presence sub-system 133 sends an alert to an alert/report sub-system 134 and a timer sub-system 136. As will be described, the alert/report sub-system 134 and the timer sub-system 136 are configured to send/record an alert that is communicated to either a docking station operator or docking station manager to indicate that a trailer has arrived at a given docking station and initiate a counter, or record a time stamp, to determine a duration for response to the alert, respectively. The alert/report sub-system 134 may be configured to track and indicate a variety of conditions. For example, dumping of air-ride suspension, positioning of the tandem/bogey, and the like may be tracked/recorded by the alert/report sub-system 134.

Upon completion of the communication of these alerts, the trailer presence sub-system 133 passes control of the workflow procedure compliance system 132 to the trailer restraint sub-system 138. The trailer restraint sub-system 138 receives feedback from the wheel restraint sub-system 62, trailer stand sub-system 66, smart chock sub-system 64, and ICC bar restraint sub-system 60 to determine when the trailer present at a given docking station is properly restrained against removal therefrom in compliance with approved protocol. Upon such determination, the trailer restraint sub-system 138 then sends alerts to the timer sub-system 136 to set another counter, or time stamp, and the alert/report sub-system 134 to send notification of proper restraint and passes control of the workflow procedure compliance system 132 to a visual confirmation system 140.

The visual confirmation sub-system 140 receives feedback from the camera, either as still images or video, and transmits the images to the mobile remote control 84 and/or to a centralized processing center for supervisor or dock manager review and storage. As previously described with respect to

12

FIGS. 5 and 6, the images are displayed on a GUI to facilitate verification of proper trailer restraint which is indicated through visual verification input 119. Similarly to the trailer presence sub-system 133 and the trailer restraint sub-system 138, once the visual confirmation system receives feedback indicating operator verification of trailer restraint from the visual verification input 119, an alert is sent to the timer sub-system 136 and the alert/report sub-system 134 and control of the workflow procedure compliance system 132 passes to a remote control door sub-system 142.

As described with respect to FIGS. 2-7, the remote control door sub-system 142 of FIG. 7 receives feedback from the login/pass-card input 104-110, remote control location monitor 87, and actuator/receiver 86. The feedback is utilized to determine the particular activation signal necessary to actuate the dock doors 50, the location of the mobile remote control and when to activate the actuator/receiver 86. Once remote door actuation of the dock doors 50 is complete, an alert is sent to the timer sub-system 136 and the alert/report sub-system 134 and control of the workflow procedure compliance system 132 passes to a leveler sub-system 144.

The leveler sub-system 144 operates similarly to the remote control door sub-system 142 since it receives feedback from the mobile remote control position monitor 87 and determines whether the mobile remote control is located within a proximity of the dock leveler 46 such that leveling should be enabled. However, once the leveler sub-system 144 determines that the mobile remote control is not located on or is in too close of a proximity to the dock leveler 46, the dock leveler 46 is enabled and remote activation of the dock leveler 46 is permitted.

As stated, the workflow procedure compliance system 132 may advantageously include a timer sub-system configured to receive alerts from each of the other systems 132-144 such that each step of the workflow procedure is timed. All timing information is then stored in a database/storage medium 148 that can be accessed by the alert/report system 134 to provide a wide variety of feedback, alerts, and reports to docking station operators and managers. Specifically, the alert/report sub-system 134 is configured to operate the signal lights 52, 88, provide auditory alerts to the speakers 54, 92, provide information to the efficiency tracking sub-system 120, and provide information to the displays 84, 90, as described with respect to FIGS. 2-4.

The alert/report sub-system 134, FIG. 7, is also configured to generate a wide variety of reports and printouts 150. For example, it is contemplated that the reports may include real-time display of current distribution center, dock, and operator efficiency, periodic efficiency information, and composite distribution center, dock, and operator efficiency information. Further, the reports may include a comparison of a particular user's performance and/or efficiency to another user's performance and/or efficiency. Furthermore, the reports may include a comparison of a particular user's current performance and/or efficiency to that user's previous performance and/or efficiency.

Referring to FIG. 8, the steps of a technique 152 for mandating workflow protocol is shown. The technique 152 is controlled by the workflow procedure compliance system 132, as described with respect to FIG. 7. The workflow protocol shown, however, is only for exemplary purposes and other workflows are contemplated and fall within the scope of the claimed invention. The steps of the technique 152 are controlled by the workflow procedure system 132 of FIG. 7 so that a first step of the technique 152 must be completed and the system be in a satisfactory operational state in compliance with approved workflow protocol before a second, or subse-

13

quent, step may initiate. That is, the workflow procedure system **132** of FIG. **7** controls the specific order of the steps through the docking station components and precludes subsequent steps from initiating until prior steps have reached an operational state compliant with approved workflow protocol.

The technique starts **154** when a trailer is identified as present at a specific docking station. Again, if applicable, the system may initiate, identify, and/or track dumping of an air-ride suspension. Next, one or a combination of restraint components may be utilized to restrain the trailer. For example, shipping yard workers or a trailer operator may engage a smart chock system and/or a smart wheel lock **156**. Specifically, as described with respect to FIG. **2**, a smart chock system may be engaged whereby a sensor disposed within the shipping yard or within the smart chock detects proper engagement with the trailer wheels and provides remote feedback of such. Additionally or alternatively, a smart wheel lock may be engaged with the trailer wheels to secure the trailer against movement and also provide feedback regarding proper and continual engagement. Furthermore, the trailer may be additionally or alternatively engaged by an ICC bar restraint to secure the trailer against removal from the docking station **158**. Similarly, a trailer jack may or may not be engaged. It is noted that, in practice, the facility will typically only utilize one of the wide variety of restraints with or without a trailer jack.

Once all trailer restraints are properly engaged, as indicated by sensor feedback **156-158**, a camera is activated **160** that is configured with a viewing range so as to provide images of the trailer restraint systems **156-158**. Once the camera is active **160**, a signal is either sent to a docking station manager to review the images or to the mobile remote control for docking station operator review **162**. In either case, the images are displayed to enable a reviewer to provide visual confirmation of air-ride suspension dumping, rearward positioning of tandems/bogeys, proper jack placement, and/or proper trailer restraint **164**. If visual confirmation is not received in a timely manner **166**, subsequent signals are sent to the reviewer **162**. Once visual confirmation is received **168**, the images are saved along with reviewer identification information **170** to create a record of adherence to proper workflow protocol.

Following proper trailer restraint and confirmation thereof **156-170**, the remotely controllable docking station door is enabled **172**. This allows the remotely controllable docking station door to be remotely actuated via the mobile remote control **174**. Following actuation of the remotely controllable docking station door **174**, the docking station leveler and/or conveyer system is activated **176** and loading or unloading may commence **178**, thereby ending this portion of the workflow protocol **180**. That is, as previously described, it is contemplated that the workflow protocol and tracking thereof may continue by tracking the loading/unloading and undocking process. For example, operator traversals to and from the trailer may be monitored.

Referring to FIGS. **9-11**, flow charts illustrating techniques for receiving feedback from a plurality of docking station components are shown. The techniques illustrate the steps for processing the feedback received from the components to determine an operational state of each component. As will be described, by determining the operational state of each component, changes in the operational state of a given component can be controlled to mandate an approved operational workflow. Furthermore, by tracking changes in the operational states of the plurality of components, the operational efficiency of the operational workflow can be tracked.

14

Referring now to FIG. **9**, the steps of a technique **182** for user operation of docking stations in accordance with approved workflow protocol is shown in detail. The technique starts **184** by the operator logging-in to a mobile remote control or fork truck **186**, as described with respect to FIGS. **4-6**. Utilizing the unique login, a check is made to determine whether the operator attempting to use the mobile remote control or fork truck has been properly trained or certified for the equipment and/or for approved workflow protocol **188**. Should the user not be properly trained or certified **190**, the login is denied and the system returns to prompt a login **186**. However, if the login is accepted as indicating proper user training or certification **192**, the technique continues by awaiting trailer arrival at a given docking station.

When a trailer arrives at a docking station the system receives feedback indicative of a change in operational state from the sensors disposed to detect trailer presence at the docking station **194**. Specifically, the sensors communicate feedback **194** indicating a change in operational state from an absence of a trailer to a presence of a trailer. Responsive to trailer presence feedback **194**, trailer restraints are initiated **196** to secure the trailer against unauthorized trailer removal from the docking station. As such, the trailer restraints change operational states from disengaged to engaged **196**. As previously described with respect to FIGS. **5** and **6**, once the trailer restraints are activated **196**, FIG. **9**, the user is provided with images, still or video, of the trailer restraints for user verification of proper restraint engagement **198**. Once the user has verified proper restraint of the trailer **198**, the remotely controllable dock doors change operational states to be enabled **200**. Specifically, the receiver/actuator connected to the dock door is activated and await an activation signal from the mobile remote control.

As previously described with respect to FIG. **3**, the system monitors the position of the mobile remote control with respect to a plurality of predefined activation zones and non-activation zones to determine whether to allow or inhibit remote actuation of the dock door. It is contemplated that restriction of dock door actuation may be achieved according to multiple techniques.

Specifically, referring to FIG. **9**, a check is made to determine whether the mobile remote control is located in an activation zone **202**. This check **202** may be performed by either the mobile remote control or remotely by the receiver/actuator or a control system. In any case, if the mobile remote control is located outside of a predefined activation zone **204**, dock door actuation is restricted **206**. It is contemplated that restriction or inhibition of dock door actuation may be accomplished via multiple techniques. Specifically, it is contemplated that the mobile remote control may not generate an activation signal unless located in an activation zone. Furthermore, if an activation signal is generated, the receiver/actuator may refuse to actuate in response to the receipt of an activation signal unless the signal originated from an activation zone, indicating the mobile remote control is located in an activation zone. Additional locking mechanisms may be utilized to secure the dock door against actuation and only release once the mobile remote control is located in an activation zone and an activation signal is received. These techniques may be used individually or in combination to execute inhibition or restriction of the dock door against actuation **206**.

Should the mobile remote control be located in an activation zone and an activation signal is received **208**, a check is made to determine whether to accept the activation signal **210**. Specifically, though the activation signal is properly generated as originating from an activation zone, the system

15

may be configured to only respond to particular, user-specific activation signals at a given dock door. That is, it is contemplated that a given dock door located within a distribution center may be configured to only respond to certain user-specific activation signals, corresponding to the login **186**, at particular times. Accordingly, a dock door may only be actuated by a particular user or users at a given time. Therefore, a given dock door is secured against accidental or unauthorized actuation by users or operators other than those designated to control the given dock door. In accordance with one embodiment, it is contemplated that only one user may be authorized for actuation of a given door at a particular time. In this case, a user must logoff of the mobile remote control before another user can be authorized to actuate the dock door. This allows accurate tracking of events. In any case, should the activation signal not be accepted **212**, the remote control doors remain enabled but do not actuate **202**. Accordingly, the system awaits receipt of a proper activation signal from within an activation zone **202**.

However, if an operational state is detected that allows dock door actuation, the activation signal is accepted as generated by an authorized user **214** and the dock door actuates **216**. Once the dock door completes the actuation operational state **216**, the dock leveler is enabled **218**. While it is contemplated that dock leveling may occur upon door actuation **216**, in a preferred embodiment, remote actuation of the leveler, as will be described, is required in order to accommodate loading or unloading of an end-loaded trailer. Accordingly, a check is then made to determine whether the mobile remote control is located in an activation zone **220** and if not, the leveler is not allowed to actuate **222**. As such, the operator may be free to commence unloading or loading of end-loaded materials or products. Once loading/unloading of end-loaded materials or products is complete or if the trailer is not end-loaded, the operator may return to an activation zone to actuate the leveler. Specifically, once located in an activation zone **224**, the leveler is actuated **226** and loading or unloading of the trailer may commence or continue **228**.

After the trailer is loaded or unloaded **228**, the technique continues by following trailer disengagement/disembarkment protocol. Specifically, a check is made to determine whether the mobile remote control is again located in an activation zone **230**. Again, the system may confirm that the mobile remote control now attempting to be utilized is the same mobile remote control that performed the docking/engagement protocol. If the mobile remote control is located outside of a predefined activation zone **232**, dock door actuation is inhibited **233** and the dock door does not close. However, should the mobile remote control be located in an activation zone and an activation signal be received **234**, a check is made to determine whether to accept the activation signal **236**. That is, though the activation signal is properly generated as originating from an activation zone, it is contemplated that the system may be configured to only respond to particular, user-specific activation signals at a given dock door. Should the activation signal not be accepted **238**, the remote control doors remain enabled but do not actuate. Accordingly, the system awaits receipt of a proper activation signal from within an activation zone **230**.

However, if the activation signal is accepted as generated by an authorized user **240**, the dock doors actuate **242** and the trailer restraints are released **244** such that the trailer may disengage or depart the docking station. At this time, operation regarding the trailer previously present at the docking station is complete and the user may decide to logoff **246**. If the user remains logged-in **248**, the system is ready to accept another trailer **194**. However, should the user logoff **250**, the

16

technique ends **252** and another user may login to the mobile remote control and operate the docking station.

Referring now to FIG. **10**, the steps of a technique **254** for tracking the operational state and operating efficiency of docking station components is shown. The technique starts **256** at the initiation of a given docking station workflow procedure. It should be recognized that the workflow procedure is only illustrated for exemplary purposes but that the system is designed to preclude operation of a subsequent component until a current component has completed operation in accordance with the workflow procedure. Therefore, while FIG. **10** illustrates a particular embodiment of a docking station workflow procedure that is strictly mandated by the system, it is contemplated that the technique may be similarly applied to other specific docking station workflow procedures or that the illustrated docking station workflow procedure may be augmented for a particular application.

The techniques starts **256** upon identifying the presence of a trailer at the docking station and, if applicable, upon completion of an air-ride suspension dump. The system then initiates a restraint timer **258**. This restraint timer is designed to monitor the efficiency of trailer restraint procedures. Upon initiation **258**, the restraint timer is incremented **260** and a check is made to determine whether feedback has been received from the restraint system or systems indicating that the trailer is properly restrained against disengagement from the docking station **262**. If such feedback is not received **264**, a determination is made to check whether the restraint timer has surpassed a tolerance threshold **266**. Specifically, the threshold is a value selected to be indicative of a permissible delay associated with restraint engagement with the trailer. Therefore, the threshold value is compared to the current value of the restraint timer to determine whether the current delay in receiving feedback indicative of proper trailer restraint is within permissible efficiency constraints **266**.

If the restraint timer is not greater than the threshold **268**, indicating the current delay in receiving feedback indicative of proper trailer restraint is tolerable, the system proceeds to increment the restraint timer **260** and reiterate the check for feedback **262**. However, if the restraint timer is greater than the threshold **270**, indicating an inefficient delay in proper trailer restraint, an alert is sent to the docking station manager or other personnel **272** informing of a delay that is indicative of inefficient workflow operation and that may be indicative of an error in the docking station components comprising the trailer restraint system. Following the transmission of the alert **272**, the restraint timer is again incremented **260** and the system reiterates the check for feedback indicative of trailer restraint **262**.

Once feedback indicative of trailer restraint is received **274**, the restraint timer is stored **276** along with date, time, and location as well as any other alert or user information associated with the restraint timer. Substantially simultaneously with saving the restraint timer **276**, a visual confirmation timer is initiated **278** and then incremented **280**.

A check is made to determine whether feedback has been received from the mobile remote control or autonomous display system indicating confirmation that the trailer is properly restrained against disengagement from the docking station **282**. If such feedback is not received **284**, a determination is made to check whether the visual confirmation timer has surpassed a tolerance threshold **286**. Again, the threshold is a value selected to be indicative of a permissible delay associated with providing a visual verification indication of trailer presence and/or restraint engagement. The threshold value is compared to the current value of the visual verification timer

17

to determine whether the current delay in receiving restraint verification feedback is within permissible efficiency constraints **286**.

If the visual verification timer is not greater than the threshold **288**, indicating the current delay in receiving restraint verification feedback is tolerable, the system proceeds to increment the visual verification timer **280** and reiterate the check for restraint verification feedback **282**. However, if the visual verification timer is greater than the threshold **290**, indicating an inefficient delay in receiving restraint verification feedback, an alert is sent to the docking station manager or other personnel **292** informing of a delay that is indicative of inefficient workflow operation and that may be indicative of an error in the docking station components comprising the trailer restraint system or verification display. Following the transmission of the alert **292**, the visual verification timer is again incremented **280** and the system reiterates the check for restraint verification feedback **282**. This process continues until visual verification feedback is received **294** whereby the visual verification timer, date information, time information, and location information as well as any other docking station or user information is stored **296**. The process then continues as will be described with respect to FIG. **11**.

Referring now to FIG. **11**, the steps of a technique **254** for tracking operating efficiency of docking station continue from FIG. **10**. The technique **254** continues with the initiation of a remote position timer **298** configured to track the efficiency of the docking operator in reaching an activation zone for remote door actuation following visual verification of trailer restraint. The remote position timer is incremented **300** and a check for feedback indicating that the mobile remote control is located in an activation zone is performed **302**.

If feedback indicating that the mobile remote control is located in an activation zone is not received **304**, a determination is made to check whether the mobile remote control position timer has surpassed a tolerance threshold **306**. That is, the threshold value is compared to the current value of the mobile remote control position timer to determine whether the current delay in receiving feedback indicating the mobile remote control has entered an activation zone, is within permissible efficiency constraints **306**.

If the mobile remote control position timer is not greater than the threshold **308**, the system proceeds to increment the mobile remote control position timer **300** and reiterates the check for mobile remote control position feedback **302**. However, if the mobile remote control position timer is greater than the threshold **310**, indicating an inefficient delay in locating the mobile remote control in an activation zone, an alert is sent to the docking station manager or other personnel **312** informing of a delay that is indicative of inefficient workflow operation and may be indicative of an error in docking station components. Following the transmission of the alert **312**, the mobile remote control position timer is again incremented **300** and the system reiterates the check for mobile remote control position feedback **302**. This process continues until feedback indicating that the mobile remote control has entered an activation zone is received **314**. The mobile remote control position timer, date information, time information, and location information as well as any other docking station or user information is then stored **316** for later retrieval for efficiency reports and alerts.

A door open timer is then initiated **318** and incremented **320**. A check to determine whether feedback indicating that the dock door has been actuated is performed **322**. If feedback indicating that the dock door has not been actuated is not received **324**, a determination is made to check whether the door open timer has surpassed a tolerance threshold **326**.

18

Specifically, a threshold value is compared to the current value of the door open timer to determine whether the current delay in receiving feedback indicating the doors have been actuated, is within permissible efficiency constraints **326**.

If the door open timer is not greater than the threshold **328**, indicating the current delay in opening the dock door is tolerable, the system proceeds to increment the door open timer **320** and reiterates the feedback check **322**. However, if the door open timer is greater than the threshold **330**, indicating an inefficient delay in opening the dock door, an alert is sent to the docking station manager or other personnel **332** informing of a delay that is indicative of inefficient workflow operation and may be indicative of an error in docking station components. Following the transmission of the alert **332**, the mobile remote control position timer is again incremented **320** and the system reiterates the check for door open feedback **322**. This process continues until feedback indicating door actuation is received **334**. The door open timer, date information, time information, and location information as well as any other docking station or user information is then stored **336** for later retrieval and processing for efficiency reports and alerts.

Following door actuation, the system may be configured to activate and engage a dock leveler **338** to level the docking station to the trailer. It is contemplated that a leveler timer may be utilized, incremented, checked and stored in a manner similar to the above-described timers. However, as such leveling may not be desirable in certain applications, such as end-loaded trailers or when utilizing an extendable conveyer system, it is contemplated that the leveler timer may be bypassed. Additionally, it is contemplated that numerous other timers may be utilized to track the efficiency, such as jack placement and confirmation timers, and provide real-time alerts regarding trailer disembarkment/disengagement workflow protocol and other docking station workflows.

Accordingly, the system is configured to generate a wide range of reports **340** using the information stored during the workflow or other workflows. For example, it is contemplated that the reports may include real-time display of current distribution center, dock, and operator efficiency, periodic efficiency information and composite distribution center, dock, and operator efficiency information. Further, the reports may include a comparison of a particular user's performance and/or efficiency to another user's performance and/or efficiency. Furthermore, the report may include a comparison of a user's current performance and/or efficiency to that user's previous performance and/or efficiency. Some reports may be provided in real-time such as the efficiency spectrum **120** described with respect to FIGS. **5** and **6**. In any case, users, operators, and managers are provided with a wide variety of information regarding the efficiency and compliance with workflow protocols.

It is contemplated that the accuracy of reporting may be enhanced and/or supplemented by utilization of the aforementioned interrupt and/or bypass functionality. That is, by allowing an operator to suspend or bypass portions of the workflow process under appropriate conditions, efficiency reports will accurately reflect unavoidable delays due to equipment failures or the like. For example, should an operator identify a damaged product, the operator may be permitted to suspend a given timer by recording the identified error in order to correct the damage without being "penalized" in the report. Furthermore, operators may be able to bypass or "hand-off" certain procedures to allow for breaks or shift changes. Accordingly, such information may be included in the efficiency reports and allow a reviewer to more accurately understand the circumstances affecting the efficiency of a

given operator or class of operators or delays inherent in the approved workflow procedure.

Referring to FIG. 12, an illustration of one embodiment of an efficiency report 342 is shown. It is contemplated that the efficiency report 342 be communicated as a GUI and transmitted across a communications network or be a printed report. The efficiency report 342 includes a variety of information and can be configured to augment the displayed efficiency information to display other configurations or selected distribution centers, docking stations, or operators.

In the illustrated embodiment, the efficiency report 342 utilizes the efficiency spectrum form of display, described with respect to FIGS. 5-6. Accordingly, real-time or current efficiency levels 343 for the selected distribution center 344, docking station 346, and operators 348, 350 are readily identifiable. Additionally, periodic efficiency levels 351 are displayed over a user-designated period, for example, of six months. Specifically, the efficiency of the selected distribution center 352 and docking station 354 over the previous six months is displayed.

Furthermore, selected efficiency comparisons 356 may be generated using a comparison engine (not shown) to aid in comparing more detailed efficiency information. For example, the efficiency tracking report 342 includes a side-by-side comparison of current operator #1 efficiency 358 with operator #1 efficiency over the prior six months 360. Accordingly, a manager can readily discern whether operator efficiency is increasing, decreasing, or ideal. Furthermore, the efficiency tracking report 342 also includes current operator #2 efficiency 362 and composite operator efficiency 364 to facilitate broader evaluations between operators.

The illustrated efficiency report 342 shows only one contemplated embodiment and other reports and notifications are also contemplated. It is contemplated that the efficiency report 342 may be alternatively formatted for specific individuals such as individual operators or management personnel. The illustrated efficiency report includes a variety of information 343-364 that is desirable to management personnel. However, as stated, additional efficiency reports are contemplated. For example, an efficiency report intended for review by an operator may only include information regarding the individual operator and the performance of the operator with respect to previous performance and to composite operator efficiency.

Therefore, a wide variety of information can be compiled and communicated regarding workflow operations and efficiency. This information can be utilized to streamline productions, cure defective procedures, and ensure operational protocol is adhered to strictly.

Therefore, the present invention includes a loading dock remote control system. The system includes a facility having at least one dock station for exchanging materials and a dock component configured to operate in at least two operational states. An actuator is included in the loading dock remote control system that is configured to change the operational state of the dock component in response to an activation signal and a mobile remote control is configured to generate the activation signal to cause the actuator to change the operational state of the dock component. The loading dock remote control system also includes at least one predefined non-activation zone wherein changing operational states of the dock component is inhibited when the mobile remote control is located within the at least one predefined non-activation zone.

In another embodiment of the present invention, a method of remotely controlling loading dock doors includes receiving a trailer at a docking station having a remotely control-

lable dock component and enabling remote activation of the remotely controllable dock component. The method also includes disabling remote activation of the remotely controllable dock component if an operator is located other than in a pre-designated activation zone.

Another embodiment of the present invention includes a loading dock component remote control system. The system includes a facility having a plurality of trailer positions, each trailer position having a dock thereat and a dock component positioned at each dock and configured to be activated permit and restrict access to and from the distribution center from the dock. The loading dock component remote control system also includes an actuator configured to actuate the dock component and a receiver configured to cause the actuator to actuate the dock component in response to an activation signal. Also, the loading dock component remote control system includes a mobile remote control configured to generate the activation signal and having an operable range about the receiver and at least one predefined non-activation zone within the operable range, wherein actuation of the dock component is disabled if the mobile remote control is located within the at least one non-activation zone.

The present invention has been described in terms of the preferred embodiment, and it is recognized that equivalents, alternatives, and modifications, aside from those expressly stated, are possible and within the scope of the appending claims.

What is claimed is:

1. A loading dock remote control system comprising:
 - a facility having at least one docking station for exchanging materials;
 - a dock component configured to operate in at least two operational states;
 - an actuator configured to change the operational state of the dock component in response to an activation signal;
 - a mobile remote control configured to generate the activation signal to cause the actuator to change the operational state of the dock component;
 - at least one predefined non-activation zone wherein changing operational states of the dock component is inhibited when the mobile remote control is located within the at least one predefined non-activation zone; and
 - at least one activation zone wherein dock component operational state changes are permitted when the mobile remote control is within the activation zone;
 - wherein the non-activation zone is located within the activation zone to preclude dock component operational state changes when the mobile remote control is within a predefined proximity to the at least one docking station.
2. The system of claim 1 wherein the activation zone comprises a hot spot located within the non-activation zone.
3. The system of claim 1 wherein the activation zone extends about a periphery of the at least one docking station.
4. The system of claim 1 further comprising another non-activation zone surrounding the activation zone to preclude dock component operational state changes when the mobile remote control is outside a further predefined proximity to the at least one docking station.
5. The system of claim 1 wherein the non-activation zone is defined by at least one of an inductor coil monitored boundary, an infrared (IR) sensor monitored boundary, a radio frequency (RF) monitored boundary, a global positioning system (GPS) monitoring system, and a radar monitored boundary.

21

6. The system of claim 1 wherein the mobile remote control comprises at least one of personal digital assistant (PDA) and a portable computer.

7. The system of claim 1 wherein the mobile remote control is further configured to be mounted on a vehicle intended to facilitate exchanging materials.

8. The system of claim 7 wherein the vehicle includes one of a login and a pass-card and wherein the mobile remote control is further configured to generate an activation signal unique to the at least one of the login and the pass-card to actuate the actuator.

9. The system of claim 8 wherein the actuator is further configured to cause an operational state change of the dock component in response to only a particular activation signal corresponding to the at least one of the login and the pass-card.

10. The system of claim 8 further comprising an operator monitoring system configured to track movement of an operator through the facility by receiving and recording the unique activation signal generated by the mobile remote control.

11. The system of claim 1 further comprising a trailer position detector and wherein the actuator includes a lock out configured to only cause an operational state change of the dock component when the trailer position detector senses a trailer at a respective docking station.

12. A method of remotely controlling loading dock doors comprising:

receiving a trailer at a docking station having a remotely controllable dock component;

enabling remote activation of the remotely controllable dock component if an operator is located in a pre-designated activation zone; and

completely disabling remote activation of the remotely controllable dock component if the operator is located in a pre-designated non-activation zone, such that no change of an operational state of the remotely controllable dock component is permitted if an operator is located in the pre-designated non-activation zone;

wherein the pre-designated non-activation zone is located within the pre-designated activation zone to preclude dock component operational state changes when the mobile remote control is within a predefined proximity to the docking station.

13. The method of claim 12 further comprising logging in to a mobile remote control with at least one of a login, a password, and a pass-card, and wherein the mobile remote control is further configured to generate a remotely controllable dock component actuation signal that is unique to one of the login, the password, and the pass-card to actuate the remotely controllable doors.

22

14. The method of claim 13 further comprising only actuating the remotely controllable dock component in response to a particular unique remotely controllable dock component actuation signal corresponding to one of a particular login, password, and pass-card.

15. The method of claim 13 further comprising denying the logging in if the at least one of the login, password, and pass-card indicate an untrained status of the operator corresponding to the one of the login, password, and pass-card.

16. The method of claim 12 further comprising enabling at least one of remote leveling of the docking station and remote extension of an extendable conveyer system to the trailer received at the docking station upon actuation of the remotely controllable dock component.

17. A loading dock remote control system comprising:
 a distribution center having a plurality of trailer positions, each trailer position having a dock thereat;
 a dock component positioned at each dock and configured to be activated to permit and restrict access to and from the distribution center from the dock;
 an actuator configured to actuate the dock component;
 a receiver configured to cause the actuator to actuate the dock component in response to an activation signal;
 a mobile remote control configured to generate the activation signal and transmit the activation signal to the receiver;

at least one predefined non-activation zone in proximity to one of the trailer positions, wherein actuation of the dock component is disabled if the mobile remote control is located within the at least one non-activation zone; and at least one activation zone wherein dock component operational state changes are permitted when the mobile remote control is within the activation zone;

wherein the at least one predefined non-activation zone is located within the activation zone to preclude dock component operational state changes when the mobile remote control is within a predefined proximity to the at least one docking station.

18. The system of claim 17 wherein the at least one non-activation zone encompasses a given proximity to a given dock to restrict actuation of the dock component when the mobile remote control is within the given proximity to the given dock.

19. The system of claim 17 wherein the mobile remote control is configured to wirelessly transmit the activation signal to the receiver.

20. The system of claim 17 wherein the dock component includes at least one of a trailer restraint, a leveler, and a dock door.

* * * * *