



US007778385B2

(12) **United States Patent**
Hsieh et al.

(10) **Patent No.:** **US 7,778,385 B2**
(45) **Date of Patent:** **Aug. 17, 2010**

(54) **STEP-AND-SHOOT CARDIAC CT IMAGING**

(56) **References Cited**

(75) Inventors: **Jiang Hsieh**, Brookfield, WI (US);
Jianying Li, New Berlin, WI (US); **John Howard Londt**, Delafield, WI (US);
Melissa L. Vass, Milwaukee, WI (US);
Darin Robert Okerlund, Muskego, WI (US); **Bernice E. Hoppel**, Delafield, WI (US)

(73) Assignee: **General Electric Company**,
Schenectady, NY (US)

(*) Notice: Subject to any disclaimer, the term of this patent is extended or adjusted under 35 U.S.C. 154(b) by 0 days.

U.S. PATENT DOCUMENTS

6,721,386	B2	4/2004	Bulkes et al.
6,836,529	B2	12/2004	Li et al.
6,865,248	B1	3/2005	Rasche et al.
6,937,690	B2	8/2005	Bruder et al.
7,058,440	B2	6/2006	Heuscher et al.
7,113,569	B2 *	9/2006	Okumura et al. 378/150
7,313,213	B1	12/2007	Hsieh et al.
7,313,215	B2	12/2007	Hsieh et al.
7,421,057	B2	9/2008	Watanabe
2003/0007593	A1	1/2003	Heuscher et al.
2003/0128801	A1	7/2003	Eisenberg et al.
2004/0077941	A1	4/2004	Reddy et al.

FOREIGN PATENT DOCUMENTS

JP	59-37935	3/1984
JP	4-30834	2/1992
JP	7-313504	12/1995
JP	9-10206	1/1997

* cited by examiner

Primary Examiner—Edward J Glick

Assistant Examiner—Thomas R Artman

(74) *Attorney, Agent, or Firm*—Ziolkowski Patent Solutions Group, SC

(21) Appl. No.: **12/371,854**

(22) Filed: **Feb. 16, 2009**

(65) **Prior Publication Data**

US 2009/0141856 A1 Jun. 4, 2009

Related U.S. Application Data

(63) Continuation of application No. 11/877,814, filed on Oct. 24, 2007, now Pat. No. 7,734,005, which is a continuation of application No. 11/160,026, filed on Jun. 6, 2005, now Pat. No. 7,313,215.

(51) **Int. Cl.**

G01N 23/083 (2006.01)

H05G 1/12 (2006.01)

(52) **U.S. Cl.** **378/8; 378/95**

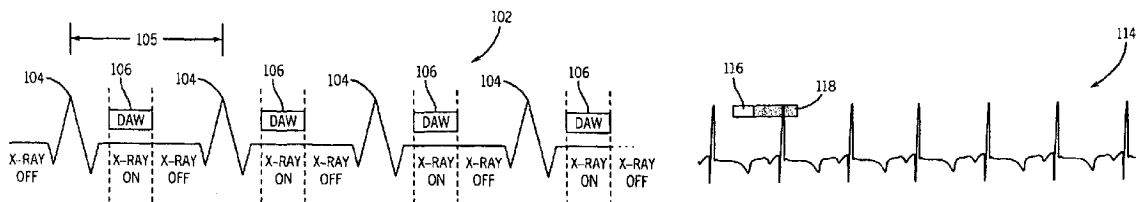
(58) **Field of Classification Search** **378/4, 378/8, 15, 19, 20, 95; 600/428**

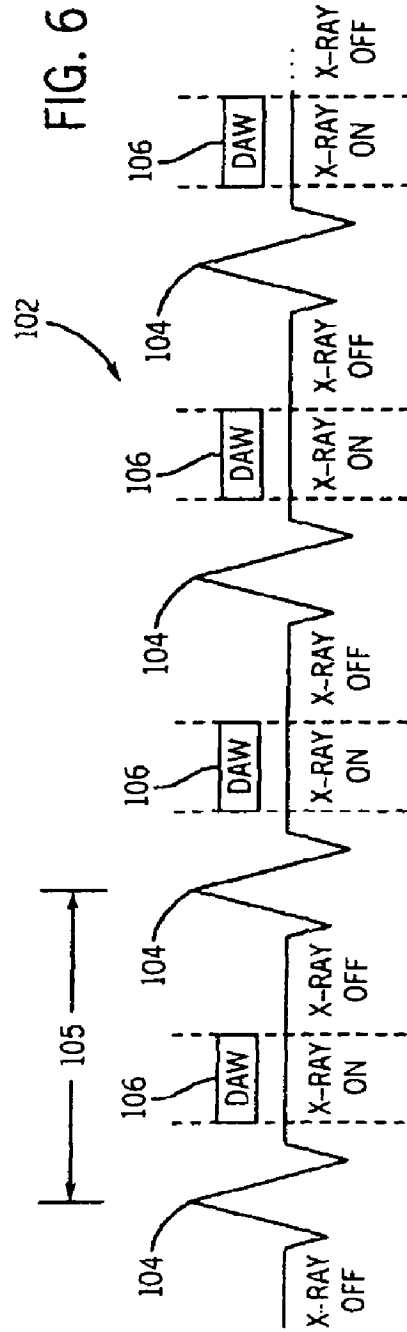
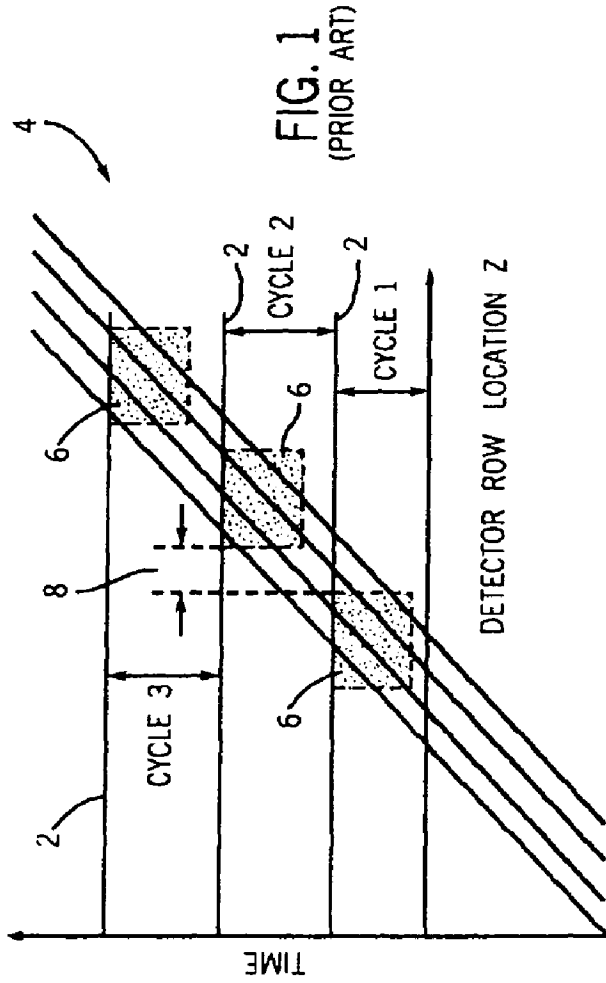
See application file for complete search history.

(57) **ABSTRACT**

The present invention is directed to a method and system of controlling rotation of a gantry to rotate at a rotational speed such that a desired relationship between center projection angles of neighboring partial scans is maintained.

14 Claims, 6 Drawing Sheets





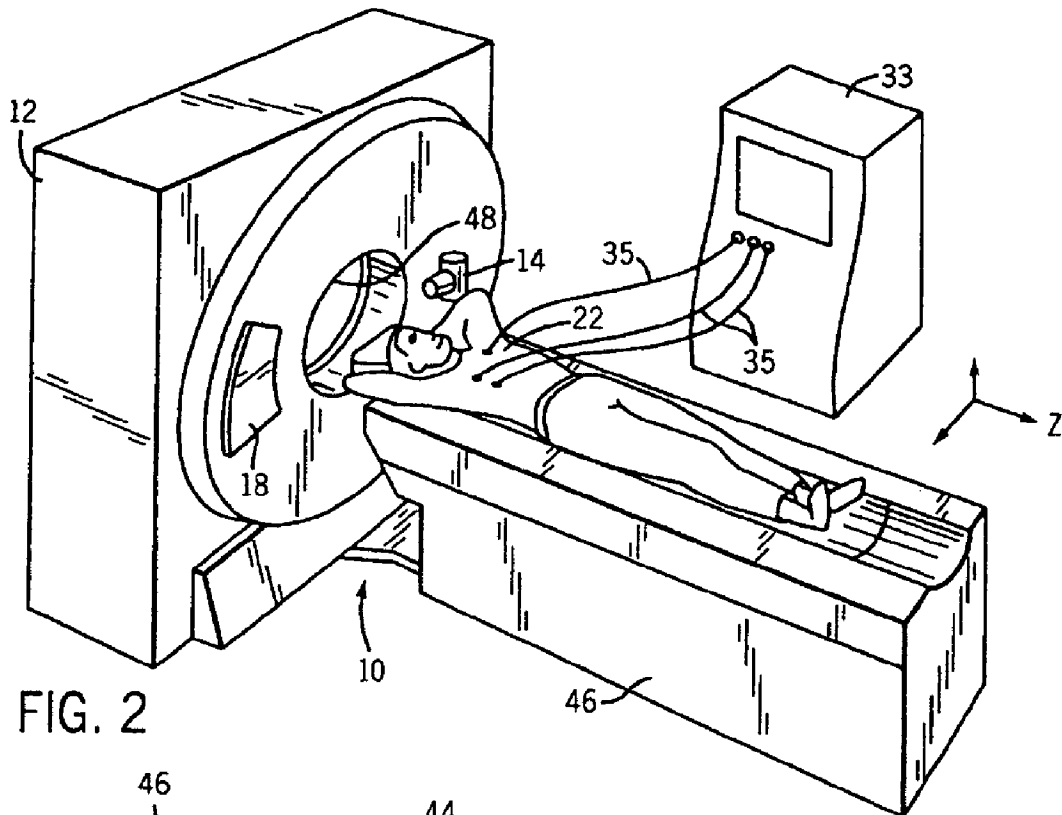


FIG. 2

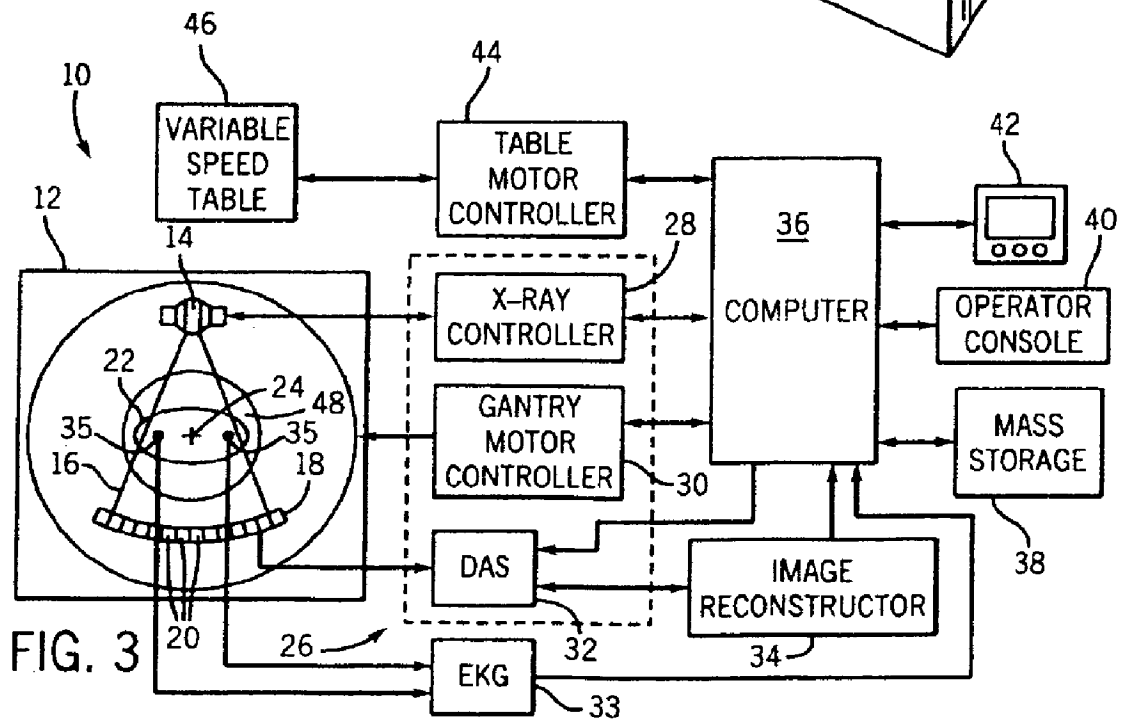
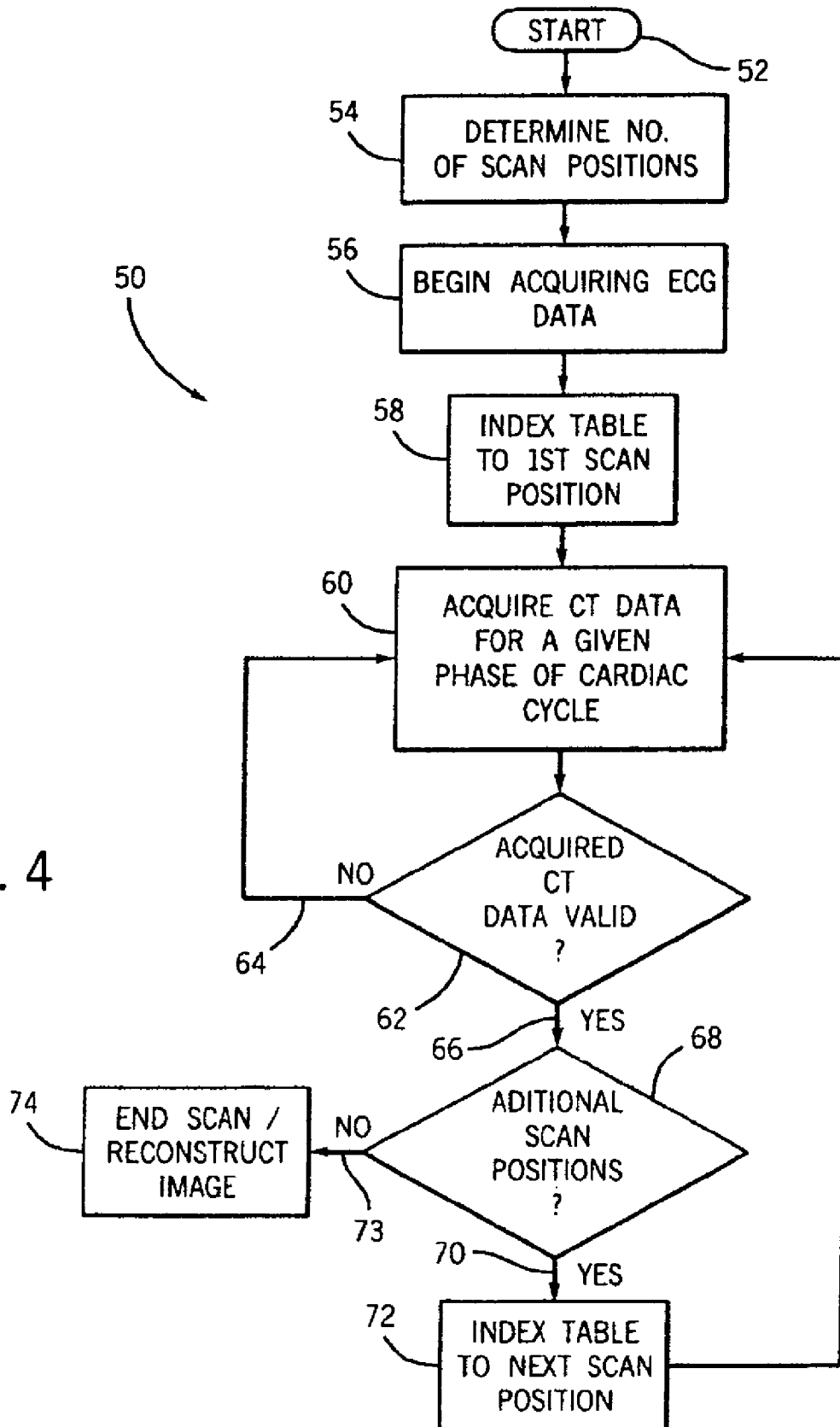


FIG. 3

FIG. 4



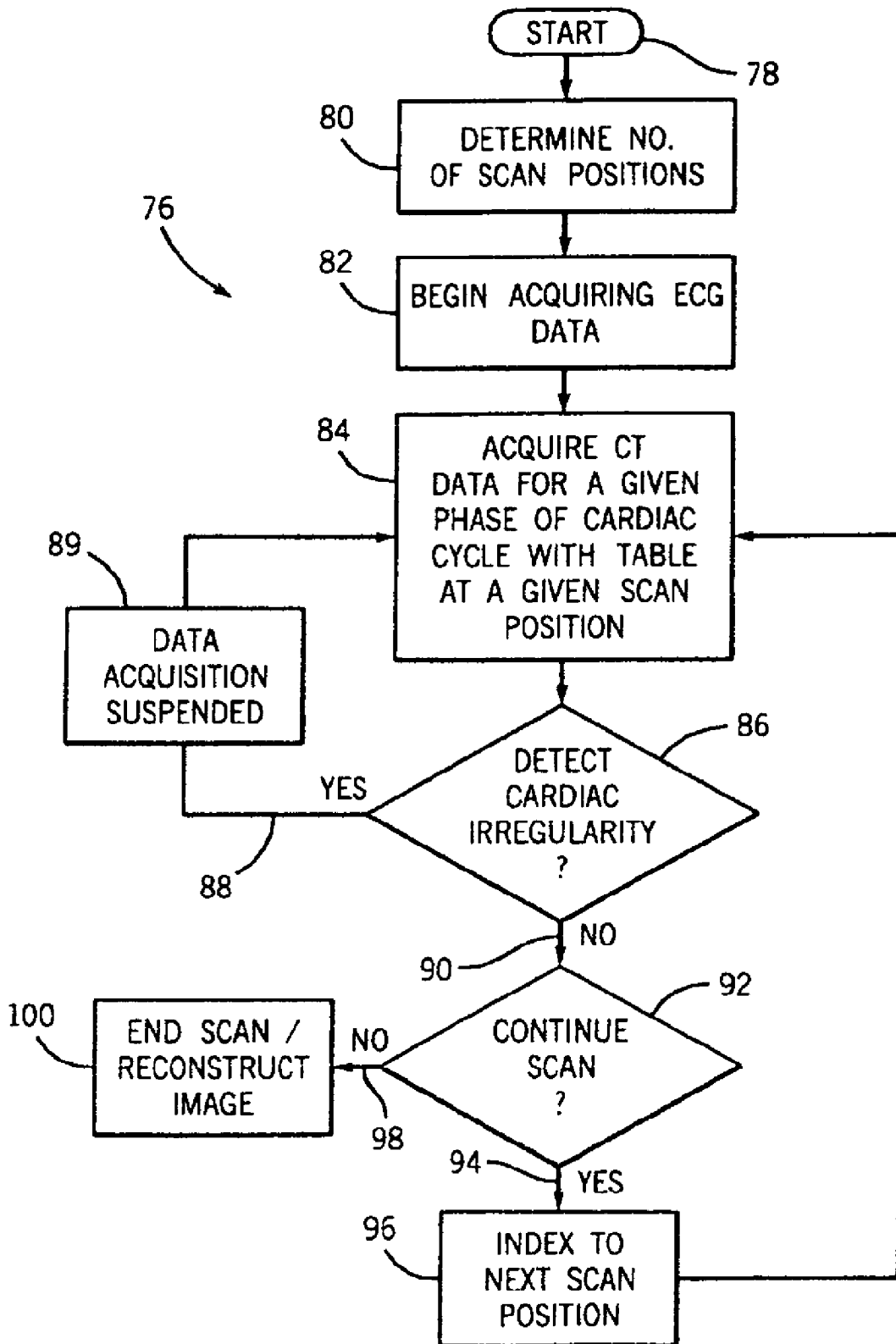


FIG. 5

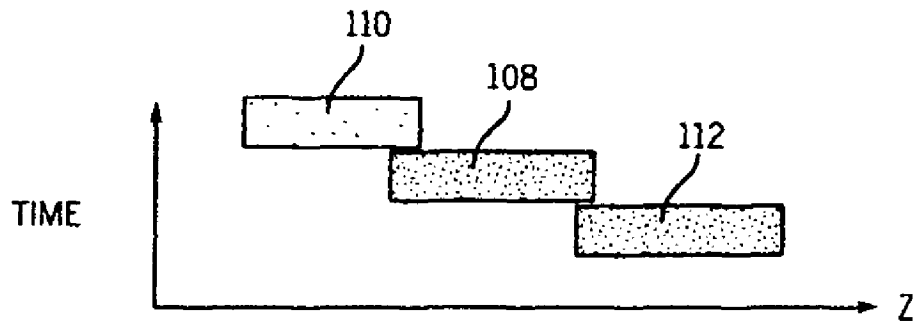


FIG. 7



FIG. 8

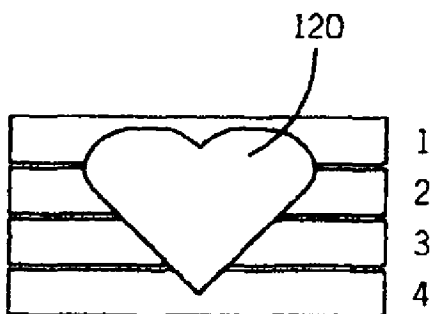


FIG. 9
(PRIOR ART)

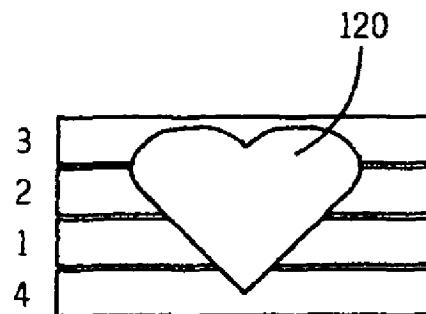


FIG. 10

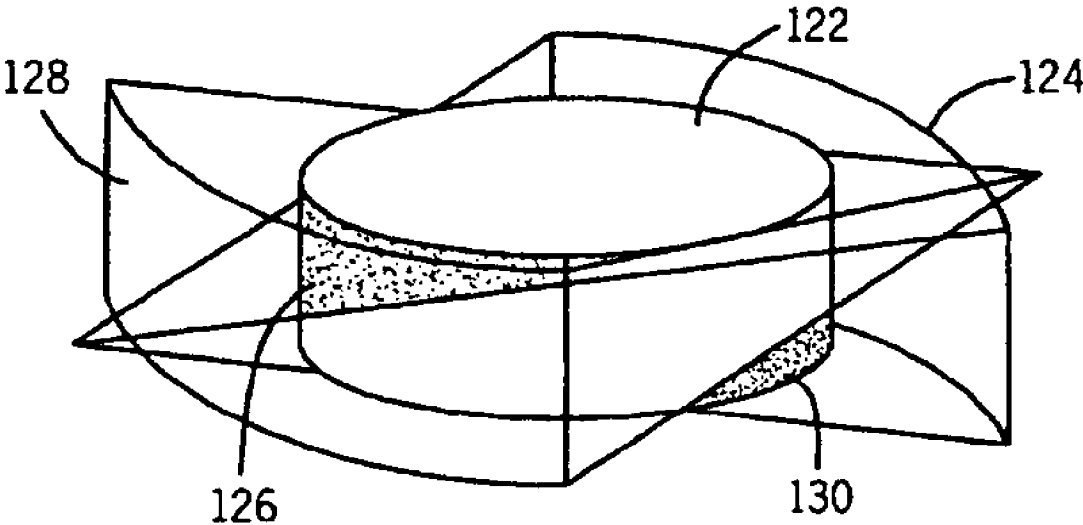


FIG. 11

STEP-AND-SHOOT CARDIAC CT IMAGING

CROSS-REFERENCE TO RELATED APPLICATION

The present application is a continuation of and claims priority to U.S. Ser. No. 11/877,814 filed Oct. 24, 2007, which is a continuation of and claims priority to U.S. Pat. No. 7,313,215 B2 filed Jun. 6, 2005, the disclosures of which are incorporated herein by reference.

BACKGROUND OF THE INVENTION

The present invention relates generally to diagnostic imaging and, more particularly, to a method and apparatus of cardiac CT imaging with discontinuous table translation. The invention further relates to the incremental translation of a subject during CT data acquisition such that the subject is not translated to a next scan position until valid data is acquired for a current scan position. Additionally, the present invention is directed to a method and system of controlling the rotational speed of the gantry of a CT scanner during physiologically gated, step-and-shoot CT data acquisition such that the projection angle of a current half-scan and its neighboring half-scans differ within a desired range. In this regard, the present invention maintains data integrity during cardiac irregularities.

The narrowing or constriction of vessels carrying blood to the heart is a well-known cause of heart attacks and, gone untreated, can lead to sudden death. In such stenotic vessels, it is known that the region immediately downstream from the constriction is characterized by having rapid flow velocities and/or complex flow patterns. In general, narrowing of blood-carrying vessels supplying an organ will ultimately lead to compromised function of the organ in question, at best, and organ failure, at worst. Quantitative flow data can readily aid in the diagnosis and management of patients and also help in the basic understanding of disease processes. There are many techniques available for the measurement of blood flow, including imaging based methods using radiographic imaging of contrast agents, both in projection and computed tomography (CT), ultrasound, and nuclear medicine techniques. Radiographic and nuclear medicine techniques often require the use of ionizing radiation and/or contrast agents. Some methods involve making assumptions about the flow characteristics which may not necessarily be true in vivo or require knowledge about the cross-sectional area of the vessel or the flow direction.

CT is one technique of acquiring blood flow and other cardiac data. Typically, in CT imaging systems, an x-ray source emits a fan-shaped beam or cone-shaped beam toward a subject or object. Hereinafter, reference to a "subject" shall include anything capable of being imaged. The beam, after being attenuated by the subject, impinges upon an array of radiation detectors. The intensity of the attenuated beam of radiation received at the detector array is typically dependent upon the attenuation of the x-ray beam by the subject. Each detector element of the detector array produces a separate electrical signal indicative of the attenuated beam received by each detector element. The electrical signals are transmitted to a data processing system for analysis which ultimately produces an image. Generally, the x-ray source and the detector array are rotated about the gantry within an imaging plane and around the subject. X-ray sources typically include x-ray tubes, which emit the x-ray beam at a focal point. X-ray detectors typically include a collimator for collimating x-ray beams received at the detector, a scintillator for converting

x-rays to light energy adjacent the collimator, and photodiodes for receiving the light energy from the adjacent scintillator and producing electrical signals therefrom. Typically, each scintillator of a scintillator array converts x-rays to light energy. Each scintillator discharges light energy to a photodiode adjacent thereto. Each photodiode detects the light energy and generates a corresponding electrical signal. The outputs of the photodiodes are then transmitted to the data processing system for image reconstruction.

Increasingly, CT imaging is being used for cardiac imaging. This increase in the implementation of CT for cardiac imaging is primarily predicated upon the relatively fast scan speeds that are now possible with CT systems and the acquisition of multi-slice data. Conventional CT systems are now capable of supporting 0.35 seconds per gantry rotation, if not faster. In fact, in the past decade, there has been nearly a three-fold improvement in temporal resolution. Multi-slice CT acquisition has also contributed to the rise of cardiac CT imaging for cardiac-related diagnoses. CT systems are now capable of significant multi-slice acquisitions.

One application of cardiac CT imaging is coronary artery imaging (CAI). The objective of CAI is to capture images and thus visualize the vasculature of the heart to detect vascular narrowing, disease, or anomalies. CAI is often used by cardiologists, radiologists, and other physicians to examine the dynamic motion of the heart muscles to detect abnormalities. To visualize the narrowing or constriction of a small vessel, the CT scan must provide high temporal resolution so as to "freeze" the cardiac motion in and around the vessel as well as provide high spatial resolution to accurately depict the size of the vessel under examination.

To improve temporal resolution, CAI studies are typically carried out with the assistance of electrocardiogram (ECG) signals acquired from the patient using an ECG monitor. An ECG monitor records the electrical activity of the heart using electrodes placed on the patient's chest, arms, and legs. An ECG monitor is commonly used to provide information regarding heart rate, heart rhythm, adequacy of blood supply to the heart, presence of a heart attack, enlargement of the heart, pericarditis, and the effects of drugs and electrolytes on the heart. ECG signals may also be used to provide cardiac phase data so as to synchronize the acquisition of CT data from the heart with the phase activity of the heart. More particular, the CT system uses the ECG signals to consistently acquire data during the same phase of the cardiac cycle during the CT scan. Doing so reduces image artifacts.

In conventional helical CAI scans, the table translates the patient continuously at a relatively slow pace, i.e. low-pitch, to ensure that the entire heart volume is properly covered. This is illustrated in FIG. 1 where detector row position as a function of time is plotted. As shown, the cardiac cycles are separated by horizontal dotted lines 2. The detector-row locations are depicted by the solid diagonal lines 4. Every point on these lines represents a single-row projection collected at a certain z location and a particular time (therefore a particular projection angle). The z-axis extends along the length of the imaging table, as shown in FIG. 2. For simplicity of illustration, a four-row system is illustrated. The shaded boxes 6 show the reconstruction windows for the cardiac images. These boxes 6, therefore, depict a unique set of time intervals and z-locations. The width of each box 6 represents the volume in z that can be covered with reconstructions corresponding to a particular cardiac cycle. The adjacent set of reconstructions takes place only after the heart reaches the same cardiac phase in the next cardiac cycle. If the combination of gantry speed and helical pitch is not properly selected, the entire heart volume will not be uniformly covered in the

reconstructed images. For example, if the table travels too fast (helical pitch is too high), gaps 8 will be present between adjacent volumes. Although small gaps could be filled by image space interpolation, larger gaps will lead to discontinuities and artifacts in the volume rendered images. This is particularly problematic when considering the variation of heart rate in a typical patient.

Conventional CAI studies are typically carried out with helical pitches between 0.1 and 0.4. Such a helical pitch is commonly used to account for the worst case scenario with regards to timing, i.e. ensure complete volume coverage at specified heart rate for a given reconstruction. This translates to a higher dose to patients since regions exposed to the x-ray radiation are highly overlapped. That is, since typical helical scan x-rays are continuously projected toward the subject, these regions of overlap correspond to regions that are exposed to multiple exposures of x-ray radiation. To reduce dose to the patient during CAI studies, a number of dose reduction techniques have been developed. In one technique, the current to the x-ray tube is modulated such that the current is reduced outside the reconstruction window defined between each heartbeat. While these techniques have advantageously reduced dose, cardiac imaging remains to be one of the highest x-ray dose applications in CT.

Additionally, as is well-known, it is preferred for physiologically gated CT imaging that data acquisition be synchronized with the physiological motion of the subject from which data is being acquired. For half-scan imaging, which is a reconstruction technique that can be used in step-and-shoot acquisitions, this can be particularly problematic. That is, it is preferred that the projection angles of neighboring scans differ by π radians. However, with conventional scanners, it is not feasible to control gantry rotation to maintain a desired relationship between the projection angles of neighboring half-scans, which can lead to image artifacts.

Therefore, it would be desirable to design an apparatus and method for cardiac CT imaging that further reduces x-ray dose as well as improves temporal and spatial resolution of CT images. It would also be desirable to have a method and system that dynamically responds to cardiac irregularities, such as arrhythmia, such that data acquisition is suspended or table translation halted if invalid or unacceptable data is acquired. Additionally, it would be desirable to dynamically adjust to the variation in heart rate during data acquisition. It would also be desirable to have a system and method of controlling gantry rotation during gated CT imaging to ensure that the projection angles of neighboring half-scans differ by approximately π radians.

BRIEF DESCRIPTION OF THE INVENTION

The present invention is directed to a method and apparatus for cardiac CT imaging that overcomes the aforementioned drawbacks.

The invention includes an imaging technique whereby a subject is incrementally translated through a number of discrete scan positions for the acquisition of CT data from a cardiac region of the subject. In this regard, the subject is not translated to the next scan position until valid or acceptable data is acquired for a current scan position. As such, the invention takes into account cardiac irregularities such as arrhythmias during the acquisition of data. That is, if an abnormality is detected, the subject is not translated to a next scan position. Rather, data is reacquired at the current scan position during the next cardiac cycle. The invention is also applicable to other physiological gated acquisitions, such as respiratory gated CT imaging.

Therefore, in accordance with one aspect, the present invention includes a scanner comprising a gantry having an x-ray source disposed therein and configured to rotate about an opening having a subject to be scanned disposed therein. The scanner further has an ECG monitor configured to acquire cardiac motion data from the subject to be scanned and a controller configured to define a full gantry rotation into a number of partial scans. The controller is further configured to rotate the gantry such that center projection angles of neighboring partial-scans differ by roughly π radians.

In accordance with another aspect of the present invention, a CT imaging system has a rotatable gantry including an opening therein to receive a subject to be scanned and an x-ray source disposed within the rotatable gantry and configured to project a fan beam of x-rays at the subject during CT data acquisition. The system further has a table movable fore and aft through the opening and a computer programmed to acquire cardiac gated CT data from a sampling region in a pair of complimentary half-scans. The computer is further programmed to cause rotation of the rotatable gantry at a gantry speed during CT data acquisition from the sampling region such that a center projection angle of x-rays in one half-scan differs from the center projection angle of x-rays in a complimentary half-scan by approximately π radians.

According to another aspect, the present invention includes a method of CT imaging. The method includes defining a number of discrete scan positions through which a scan subject is to be translated for data acquisition and rotating an x-ray source through a series of projection angles and at a rotational speed about the scan subject along an annular path of rotation when the scan subject is positioned at a discrete scan position. The method further includes defining full rotations of the x-ray source into a first half-scan and a second half-scan and, for each projection angle of the first half-scan, defining a complimentary projection angle of the second half-scan. The method also includes controlling the rotational speed of the x-ray source such that the projection angles of the first half-scan differ from their complimentary projection angles of the second half-scan by approximately π radians.

Various other features and advantages of the present invention will be made apparent from the following detailed description and the drawings.

BRIEF DESCRIPTION OF THE DRAWINGS

The drawings illustrate one preferred embodiment presently contemplated for carrying out the invention.

In the drawings:

FIG. 1 is a plot of time versus detector row location in z illustrating the coverage gap that is possible with a conventional cardiac CT acquisition.

FIG. 2 is a perspective view of a CT system incorporating the present invention.

FIG. 3 is a block schematic diagram of the system illustrated in FIG. 2.

FIG. 4 is a flow chart setting forth the steps of a cardiac CT data acquisition in accordance with the present invention.

FIG. 5 is a flow chart setting forth the steps of a cardiac CT data acquisition in accordance with another embodiment of the present invention.

FIG. 6 is a schematic of an exemplary ECG signal.

FIG. 7 is a schematic illustrating overlapping data acquisition regions in accordance with another embodiment of the present invention.

FIG. 8 is a schematic representation of an exemplary ECG signal illustrating data acquisition time and inter-scan delay relative to a given cardiac cycle.

FIG. 9 is a schematic illustrating sequential scanning of a heart in a conventional manner.

FIG. 10 is a schematic illustrating non-sequential scanning of a heart in accordance with one embodiment of the present invention.

FIG. 11 is a schematic illustrating an imaging volume being imaged in a pair of complimentary half-scans.

DETAILED DESCRIPTION OF THE PREFERRED EMBODIMENT

Referring to FIGS. 2 and 3, a computed tomography (CT) imaging system 10 is shown as including a gantry 12 having an x-ray source 14 that projects a beam of x-rays 16 toward a detector array 18 on the opposite side of the gantry 12. Detector array 18 is formed by a plurality of detectors 20 that sense the projected x-rays that pass through a medical patient 22. In a preferred embodiment, detector array 18 has 64 rows of detectors for the acquisition of 64 slices of data in a single gantry rotation. Each detector 20 produces an electrical signal that represents the intensity of an impinging x-ray beam and hence the attenuated beam as it passes through the patient 22. During a scan to acquire x-ray projection data, gantry 12 and the components mounted thereon rotate about a center of rotation 24.

Rotation of gantry 12 and the operation of x-ray source 14 are governed by a control mechanism 26 of CT system 10. Control mechanism 26 includes an x-ray controller 28 that provides power and timing signals to an x-ray source 14 and a gantry motor controller 30 that controls the rotational speed and position of gantry 12. A data acquisition system (DAS) 32 in control mechanism 26 samples analog data from detectors 20 and converts the data to digital signals for subsequent processing. As will be described below, computer 36 also receives ECG signals from an ECG 33 connected to the subject via leads 35 to acquire cardiac data of the subject 22. The computer 36 correlates the ECG signals to determine the phases of the cardiac region. Preferably, the ECG machine 33 obtains an ECG recording of the patient before scanning commences such that data acquisition can be timed to occur during quiescent periods between peaks of a cardiac cycle. During these quiescent periods, the heart is relatively still and, therefore, it is preferred for data acquisition to occur during these portions of the cardiac cycle to minimize motion artifacts in the final reconstructed image. An image reconstructor 34 receives sampled and digitized x-ray data from DAS 32 and performs high-speed reconstruction. The reconstructed image is applied as an input to a computer 36 that stores the image in a mass storage device 38.

Computer 36 also receives commands and scanning parameters from an operator via console 40 that has a keyboard. An associated cathode ray tube display 42 allows the operator to observe the reconstructed image and other data from computer 36. The operator supplied commands and parameters are used by computer 36 to provide control signals and information to DAS 32, x-ray controller 28, ECG monitor 33, and gantry motor controller 30. In addition, computer 36 operates a table motor controller 44 that controls a motorized table 46 to position patient 22 and gantry 12. Particularly, table 46 moves portions of patient 22 through a gantry opening 48.

The present invention is directed to a technique of cardiac CT imaging applicable with the system illustrated in FIGS. 2-3, or equivalents thereof.

In conventional cardiac CT imaging, a helical scan is used. Helical scans are commonly employed because they advantageously eliminate an inter-scan delay. That is, with a helical

scan, x-ray projection toward the subject is continuous as is table translation through the opening in the gantry. As a result, helical scans are generally not well-suited for physiological gated scans, such as cardiac imaging, as a result of the lack of flexibility to independently select acquisition location and timing. In helical scans, the table is translated or indexed at a constant speed. This has been shown to be problematic for patients that experience a variation in heart rate during data acquisition.

Referring now to FIG. 4, a technique 50 to incrementally step a subject through a number of discrete scan positions in accordance with one embodiment of the present invention will be described. The technique will be described with respect to cardiac imaging, but is applicable with other physiologically gated acquisitions. One skilled in the art will appreciate that the technique illustrated in FIG. 4 may be embodied in the set of instructions of a computer program that may be executed by one or more processors of the CT system. Additionally, the computer program may be stored on a computer readable storage medium, such as a CD, or embodied in a computer data signal that is downloadable to a CT system.

Technique 50 begins at 52 with the prescription of a cardiac CT scan. In this regard, electrodes of an ECG monitor are attached to the subject and the subject is properly positioned on the table that is designed to move the subject fore and aft through the opening defined within the gantry. Based on the prescription identified at 52, a number of discrete scan positions is determined at 54. For example, for a CAI study, the number of discrete scan positions would be typically four or five positions for 40 mm detector coverage. That is, the entire volume of the heart of a subject can, typically, be scanned in four or five scan positions. ECG data is continuously acquired throughout the acquisition starting at 56 from the subject. As described above, the computer of the CT system then correlates the ECG signals to determine the phases of the subject's heart motion. In this regard, it is preferred that reading and analysis of the ECG recordings of the subject begins before scanning commences so that data acquisition can be timed to occur between peaks of a cardiac cycle. During these relatively quiet periods, the heart is still and it is, therefore, preferred for data acquisition to occur during these portions of the cardiac cycle to minimize motion artifacts. Thereafter, the table having the scan subject disposed thereon is indexed to the first scan position 58. Thereat, CT data is acquired for a given phase of the cardiac cycle 60.

Once data is acquired for the given phase of cardiac cycle with the subject positioned at the first scan position, a determination is made as to whether the acquired CT data is valid 62. If valid data is not acquired 62, 64, technique 50 returns to step 60 with the reacquisition of data for the given phase of the cardiac cycle with the subject still positioned at the first scan position. However, if valid CT data is acquired 62, 66, then technique 50 proceeds to step 68 and determines if additional scan positions remain 68. If so 68, 70, the table is indexed to the next scan position 72 whereupon data is acquired for the given phase of cardiac cycle with the subject positioned at the next scan position. However, if data has been acquired for all scan positions 68, 73, the scan ends at 74 with reconstruction of an image.

Technique 50, as described above, is directed to the acquisition of gated CT data from a cardiac region of a subject whereby the subject is incrementally translated through a number of scan positions for the acquisition of data. In contrast to conventional gated acquisitions, table motion is discontinuous. That is, the subject is positioned at a discrete scan position, data is acquired from the subject, a determination is made to determine if the data acquired is valid, and, if so, the

subject is translated to the next discrete scan position. If the acquired data is invalid, then the subject remains fixed at the current scan position and data is reacquired. In this regard, the subject does not proceed to the next scan position until valid data is acquired for the current scan position.

Additionally, in a preferred embodiment, x-ray projection toward the subject only occurs during data acquisition. That is, during the intervals in which the table is moved from one scan position to the next scan position, it is preferred that x-ray projection be disabled. In this regard, as data is not acquired during translation of the table, x-ray exposure to the subject does not occur during translation of the table. In this regard, technique **50** advantageously further reduces patient exposure to radiation when compared to conventional helical gated acquisitions.

Referring now to FIG. **5**, not only is the present invention directed to a technique, such as that described in FIG. **4** that incrementally translates a subject to a number of discrete scan positions, the present invention also includes a technique **76** for interrupting or suspending data acquisition at a given scan position based on a detected irregularity or abnormality in the received ECG signals. While technique **76** will be described independent of the technique described with respect to FIG. **4**, one skilled in the art will appreciate that technique **76** may be carried out in conjunction with technique **50** of FIG. **4**. Technique **76** begins at step **78** with the prescription of a cardiac CT scan. Thereafter, based on the scan parameters identified at step **78**, a number of discrete scan positions is determined at **80**. As discussed above, to image the heart of a typical patient, four or five discrete scan positions are needed. Similar to the technique of FIG. **4**, ECG data is acquired at **82** prior to the commencement of the CT scan. The acquired ECG data is used by the CT system to correlate the acquisition of CT data from a given phase of the cardiac cycle. One skilled in the art will appreciate, however, that ECG signals are also acquired during the acquisition of CT data. CT data is acquired **84** for a given phase of the cardiac cycle with the subject positioned at a given scan position. While the CT data is being acquired **84**, the received ECG signals are monitored to determine if any cardiac irregularities have occurred **86**. If so, **86**, **88**, data acquisition for the given scan position is suspended at **89**. In this regard, the acquisition of data for the given phase of the cardiac cycle from the subject will recommence in the next cardiac cycle. If a cardiac irregularity is not detected **86**, **90**, technique **76** proceeds to step at **92** and determines whether the scan should continue **92**, i.e. additional scan positions remain. If so **92**, **94**, the table is indexed to the next scan position at **96** whereupon data is acquired for the given phase of the cardiac cycle of the subject at the next scan position. Steps **84** through **92** are then re-executed until data has been acquired for all scan positions. Once data has been acquired for all scan positions **92**, **98**, technique **76** proceeds to step **100** where the scan ends and an image is reconstructed **100**.

Referring now to FIG. **6**, an exemplary ECG signal **102** is shown. ECG signal **102** graphically illustrates movement of the heart of a subject during a cardiac cycle. As illustrated, the cardiac cycle, i.e., heartbeat, is typically defined by a pair of R-peaks **104**. In this regard, a single heartbeat is characterized by an R-R interval **105**. As described above, the present invention advantageously reduces x-ray dose to the patient. This is achieved by defining a data acquisition window **106** within each R-R interval **105**. As such, x-rays are projected toward the subject only during the data acquisition window **106**. In this regard, x-ray emission is disabled during other periods of the R-R interval **105**. One skilled in the art will appreciate that the data acquisition window **106** corresponds

to the phase of the heart during which data acquisition is to occur. As such, during those phases of the cardiac cycle in which data acquisition is not to occur, the x-ray tube is controlled not to project x-rays toward the subject. Moreover, since data acquisition, timing, and location can be treated independently, gating is more effective. Additionally, even for the case in which all cardiac phases need to be acquired and reconstructed, the acquisition ensures that an overlap of x-ray exposure is not required in the covered regions. That is, all the regions are scanned only once which is in contrast to low-pitch helical acquisitions where the majority of the scan volume is scanned multiple times. Testing has shown that a 67% to 83% reduction in dose can be expected with the present invention when compared to conventional low-pitch helical scans.

Referring now to FIG. **7** and in accordance with another embodiment of the present invention, overlapping data acquisitions are used to reduce artifacts. Data acquisition **108** overlaps partially with data acquisition **110** and data acquisition **112**. This overlapping is exploited to address two major challenges in cardiac imaging: inconsistent heart rate and cone beam. That is, in a typical patient, heart rate varies. Even at a relatively constant heart rate **108**, **110**, **112**, heart motion does not exactly replicate cycle to cycle. Since data acquisitions **108**, **110**, **112** take place in different cardiac cycles, if not addressed, inconsistency between the heart cycles can lead to shifted boundaries. In addition, for cone beam data acquisitions, some cone beam related artifacts can be present in the images. As such, the overlapped region **108** provides a tool to “blend” regions **108-112** together in a more consistent manner. This blending can take place either during the reconstruction or after reconstruction of an image.

In yet another embodiment and referring to FIG. **8**, gantry speed, inter-scan delay, and coverage are determined based on the patient heart rate, schematically illustrated by ECG signal **114**. For the step-and-shoot acquisition described herein, the total scan time is defined by the data acquisition time and the inter-scan delay. The data acquisition time **116** is the time used to collect data and the inter-scan delay **118** is to move the patient or table to the next location and ready the patient for scanning. When the total scan time is less than a patient heart cycle, the next scan can start without any gap in the patient heart cycle. If the total scan time is larger than the heart cycle, scanning cannot start at the next heart cycle. This next heart cycle must be skipped. If the total scan time is larger than two cardiac cycles, two idle cycles will be present in which no data acquisition takes place. By changing the gantry scan speed (changing the data acquisition time) and the amount of distance that the table has to travel (changing the inter-scan delay), the total scan time can be modified so that a minimum time is spent at idle. If it is necessary to reduce the table travel distance, then pre-patient collimation may be changed to reduce x-ray dose to patient. That is, if the largest distance the table can travel to fit within a single cardiac cycle is 35 mm, x-ray coverage must be reduced by collimating down the primary x-ray beam to 35 mm, i.e. from 35 mm to 40 mm, so that additional dose is not applied to patient.

Referring now to FIGS. **9** and **10** of the present invention, in another embodiment, the entire heart can be scanned “out of sequence”, to reduce total acquisition time and/or improve image quality. For example, in a conventional acquisition, the heart **120** is covered sequentially from top to bottom, as illustrated in FIG. **9**. However, for a given scan, it may be advantageous to start from a middle or top location and skip a location to scan another part for contrast optimization as illustrated in FIG. **10**.

Additionally, it is contemplated that different parts of the heart can be scanned in slightly different cardiac phases. It is well known that the entire heart does not move in complete synchrony. As such, the best resting phase for the right atrium may not be the best location for the left ventricle. Accordingly, the present invention allows each location to be acquired independently. As such, modification can be made to tailor the acquisition to the anatomy.

In another embodiment, the present invention is directed to controlling rotational speed of the gantry during data acquisition to maintain a desired relationship between projection angles of neighboring half-scans. Half-scan imaging is a common imaging technique for cardiac CT imaging to improve temporal resolution. With half-scan imaging, projections over the projection angle of $\pi+2\gamma_m$ is used instead of 2π , where γ_m is the fan angle of the detector. Such a reconstruction can be characterized by the following equation:

$$f(x, y, z) = \frac{1}{2} \int_0^{\pi+2\gamma_m} \left(\frac{D}{D+y} \right)^2 d\beta \times \int_{-\infty}^{\infty} \frac{D}{\sqrt{D^2+s^2+v^2}} w(s, \beta) q(s, v, \beta) h(s' - s) ds, \quad \text{Eqn. (1)}$$

where $w(s, v, \beta)$ is the half-scan weight:

$$w(s, \beta) = 3\theta^2(\gamma, \beta) - 2\theta^3(\gamma, \beta), \quad \text{Eqn. (2)}$$

and

$$\theta(\gamma, \beta) = \begin{cases} \frac{\beta}{2\gamma_m - 2\gamma}, & 0 \leq \beta < 2\gamma_m - 2\gamma, \\ 1, & 2\gamma_m - 2\gamma \leq \beta < \pi - 2\gamma, \\ \frac{\pi + 2\gamma_m - \beta}{2\gamma_m - 2\gamma}, & \pi - 2\gamma \leq \beta < \pi + 2\gamma_m, \end{cases} \quad \text{Eqn. (3)}$$

where D is x-ray source to isocenter of the detector distance, s and v are the projection channel and row locations according to the reconstructed pixel (x,y,z), β is the projection angle, and γ is the detector fan angle corresponding to s.

For a step-and-shoot acquisition, such as that described herein, the completely sampled region is less than a cylindrical disc with its height equal to the detector isocenter coverage. That is, the cone beam geometry reduces the coverage of each projection to a region with data acquisition areas much narrower than the desired volume near the source, as illustrated in FIG. 11. The volume 122, from which data is acquired, is not completely sampled in a single half-scan. In this regard, the fan beam 124 of a first half-scan fails to acquire data from region 126 of the sampling volume 122. As a result, image artifacts can become prevalent over the 2π angular range.

To reduce the occurrence of image artifacts in a step-and-shoot cardiac gated CT acquisition, the present invention is further directed to controlling gantry rotation during data acquisition such that the difference between the projection angles of a pair of complimentary half-scan is approximately π radians. That is, because of the cone beam geometry of an x-ray fan beam, the region closer to the detector covers a z-extent that is significantly higher than the coverage at detector isocenter. Therefore, two projections that are spaced one detector width (at isocenter) apart, and their projection angles differ by π radians, there is little sampling gap in the sampling volume. The two projections, therefore, form a complimentary pair. This is illustrated in FIG. 11.

As shown, the projections defined by fan beam 128 form a complimentary pair with the projections of fan beam 124. Moreover, fan beam 128 captures data from the unsampled region 126 of fan beam 124 and results in an unsampled region 130 that is sampled by the fan beam 124. For cardiac gated CT imaging, it is desired to maintain a desired relationship between fan beams 124 and 128. This relationship is maintained by controlling the speed at which the gantry rotates, and as a result, the x-ray source, rotates. Moreover, gantry rotation must be controlled such that CT data acquisition is synchronized with cardiac motion of the subject. This is achieved by acquiring cardiac motion data before data acquisition using an ECG monitor. By measuring ECG data prior to data acquisition, the heart rate of the subject can be ascertained before data acquisition of CT data. In this regard, the gantry controller or other controller may set gantry rotation at a speed that ensures that the center angles of two neighboring half-scans differ within a range of π radians. Specifically, the gantry controller sets a gantry rotational speed based on the following expression:

$$\pi - \Gamma \leq \beta_A - \beta_B \leq \pi + \Gamma \quad \text{Eqn. (4)}$$

where Γ is a parameter that describes the allowable variation from π , β_A and β_B are the center projection angles of neighboring half-scans. While a number of values for Γ may be used, in one preferred embodiment, a value of $\pi/4$ is used. It is preferred that Γ be selected to have a value that satisfies a balance between image quality and robustness for heart rate variation. While it is contemplated that values for Γ greater than $\pi/4$ may be used, it is preferred that a Γ value of $\pi/4$ or less be used. In this regard, the center projection angles between neighboring half-scans differ by roughly π radians.

The present invention has been described with respect to segmenting full gantry rotations into a pair of half-scans; however, one skilled in the art will appreciate that a full gantry rotation may be segmented into multiple partial scan. In this regard, gantry rotation is controlled such that a desired relationship between the center projection angles of neighboring partial scans is maintained to reduce image artifacts.

Therefore, the present invention includes a CT imaging system having a rotatable gantry with an opening therein to receive a subject to be scanned as well as a table movable fore and aft through the opening. The system also has a controller that is configured to move a subject disposed on the table to a first data acquisition position. The controller is further configured to coordinate acquisition of imaging data from the subject at the first data acquisition position with a cardiac cycle of the subject. Moreover, the controller is configured to advance the subject to a subject data acquisition position different from the first data acquisition position only if the imaging data acquired at the first data acquisition position is deemed acceptable.

The present invention further includes a method of cardiac CT imaging whereby a subject is positioned at a first data acquisition position of a number of discrete data acquisition positions. A dataset of gated CT data is then acquired from a cardiac region of the subject with the subject positioned at the first data acquisition position. The method further includes determining if the dataset is valid and, if so, positioning a subject at a second data acquisition position different from the first data acquisition position. If the dataset is invalid, the method further includes reacquiring the dataset of gated CT data from the cardiac region of the subject with the subject positioned at the first data acquisition position.

The invention is also embodied in a computer readable storage medium having a computer program stored thereon

and representing a set of instructions is disclosed. The set of instructions, when executed by a computer, causes the computer to incrementally translate a scan subject positioned on a table of a CT system through a number of discrete scan positions. The computer is further caused to acquire physiologically gated CT data at each scan position and monitor physiological motion activity of the scan subject during data acquisition at each scan position. The set of instructions further causes the computer to suspend data acquisition from the scan subject at a scan position if an irregularity in physiological motion activity of the scan subject is detected during data acquisition from the scan subject when positioned at the scan position.

The present invention is further directed to a scanner comprising a gantry having an x-ray source disposed therein and configured to rotate about an opening having a subject to be scanned disposed therein. The scanner further has an ECG monitor configured to acquire cardiac motion data from the subject to be scanned and a controller configured to define a full gantry rotation into a number of partial scans. The controller is further configured to rotate the gantry such that center projection angles of neighboring partial-scans differ by roughly π radians.

A CT imaging system is also disclosed as having a rotatable gantry including an opening therein to receive a subject to be scanned and an x-ray source disposed within the rotatable gantry and configured to project a fan beam of x-rays at the subject during CT data acquisition. The system further has a table movable fore and aft through the opening and a computer programmed to acquire cardiac gated CT data from a sampling region in a pair of complimentary half-scans. The computer is further programmed to cause rotation of the rotatable gantry at a gantry speed during CT data acquisition from the sampling region such that a center projection angle of x-rays in one half-scan differs from the center projection angle of x-rays in a complimentary half-scan by approximately π radians.

A method of CT imaging is also disclosed. The method includes defining a number of discrete scan positions through which a scan subject is to be translated for data acquisition and rotating an x-ray source through a series of projection angles and at a rotational speed about the scan subject along an annular path of rotation when the scan subject is positioned at a discrete scan position. The method further includes defining each full rotation of the x-ray source into a first half-scan and a second half-scan and, for each projection angle of the first half-scan, defining a complimentary projection angle of the second half-scan. The method also includes controlling the rotational speed of the x-ray source such that the projection angles of the first half-scan differ from their complimentary projection angles of the second half-scan by approximately π radians.

The present invention has been described in terms of the preferred embodiment, and it is recognized that equivalents, alternatives, and modifications, aside from those expressly stated, are possible and within the scope of the appending claims.

What is claimed is:

1. A scanner comprising:

- a gantry having an x-ray source disposed therein and configured to rotate about an opening having a subject to be scanned disposed therein;
- an ECG monitor configured to acquire cardiac motion data from the subject to be scanned; and

a controller configured to:

- acquire CT data during a given phase of a cardiac cycle;
 - adjust an inter-scan delay of the scanner based on a heart rate of the subject;
 - detect irregularities in the cardiac cycle using data acquired through the ECG monitor;
 - change an amount of pre-patient collimation based on a table travel distance; and
 - reacquire the CT data if an irregularity is detected.
2. The scanner of claim 1 wherein the controller is further configured to:
- define full gantry rotations into a number of partial scans; and
 - rotate the gantry such that center projection angles of neighboring partial-scans differ by approximately π radians.
3. The scanner of claim 2 wherein the controller is further configured to rotate the gantry at a gantry speed that ensures the center projection angle of neighboring partial-scans differ within the limits of $(\pi-\Gamma, \pi+\Gamma)$.
4. The scanner of claim 2 further comprising a CT data acquisition system at least connected to the ECG monitor and designed to synchronize CT data acquisition with cardiac motion of the subject.
5. The scanner of claim 4 wherein the ECG monitor is configured to acquire cardiac motion data before and during CT data acquisition.
6. The scanner of claim 1 further comprising a table movable fore and aft through the opening to position the subject and wherein the controller is further configured to:
- position the subject at a given scan position;
 - determine if CT data acquired at the given scan position is valid; and if so,
 - translate the table to a next scan position; and if not,
 - re-acquire CT data from the subject while positioned at the given scan position.
7. The scanner of claim 6 further comprising an x-ray tube and wherein the controller is further configured to reduce power supplied to the x-ray tube during translation of the table from one scan position to a next.
8. A CT imaging system comprising:
- a rotatable gantry having an opening therein to receive a subject to be scanned;
 - an x-ray source disposed within the rotatable gantry and configured to project a fan beam of x-rays at the subject during CT data acquisition;
 - a table movable fore and aft through the opening; and
 - a computer programmed to:
 - acquire cardiac gated CT data from a sampling region in a pair of complimentary half-scans;
 - cause rotation of the rotatable gantry at a gantry speed during CT data acquisition from the sampling region such that a center projection angle of x-rays in one half-scan differs from the center projection angle of x-rays in a complimentary half-scan by approximately π radians;
 - adjust an amount of distance the table has to travel during data acquisition and an amount of axial coverage of the subject, based on data acquired from an ECG of the subject;
 - assess whether the acquired cardiac gated CT data includes a cardiac irregularity; and
 - reacquire a pair of complimentary half-scan cardiac gated CT data if an irregularity is present in the first data acquired.

13

9. The CT system of claim 8 wherein the computer is further programmed to define a full gantry rotation into a first half-scan and a second half-scan.

10. The CT system of claim 9 wherein the computer is further programmed to cause rotation of the gantry at a gantry speed such that the center projection angle of the first half-scan differs from the center projection angle of the second half-scan within the limits of $(\pi-\Gamma, \pi+\Gamma)$.

11. The CT system of claim 8 further comprising an ECG monitor that measures cardiac motion of the subject and provides cardiac motion feedback to the computer, and wherein the computer is further programmed to synchronize CT data acquisition with cardiac motion of the subject.

12. The CT system of claim 8 wherein the computer is further programmed to define the pair of complimentary half-

14

scans such that an imaging volume of one half-scan partially overlaps that of its complimentary half-scan.

13. The CT system of claim 8 wherein the computer is further programmed to:

define a number discrete table positions; and
 incrementally translate the table through the number of discrete table positions to acquire the complimentary half-scans at each discrete table position.

14. The CT system of claim 13 wherein the computer is further programmed to only allow translation of the table to a next table position if data acquired from the subject at a current table position is deemed valid.

* * * * *