



US006680995B2

(12) **United States Patent**
Toth et al.

(10) **Patent No.:** **US 6,680,995 B2**
(45) **Date of Patent:** **Jan. 20, 2004**

(54) **METHOD AND APPARATUS OF DETERMINING AND DISPLAYING A HELICAL ARTIFACT INDEX**

6,438,195 B1 * 8/2002 Hsieh 378/4
6,501,849 B1 * 12/2002 Gupta et al. 382/141
6,529,574 B1 * 3/2003 Hsieh 378/4
2003/0083565 A1 * 5/2003 Toth et al. 600/407

(75) Inventors: **Thomas L. Toth**, Brookfield, WI (US);
Piero Simoni, New Berlin, WI (US)

* cited by examiner

(73) Assignee: **GE Medical Systems Global Technology Co., LLC**, Waukesha, WI (US)

Primary Examiner—Edward J. Glick
Assistant Examiner—Irakli Kiknadze

(*) Notice: Subject to any disclaimer, the term of this patent is extended or adjusted under 35 U.S.C. 154(b) by 95 days.

(74) *Attorney, Agent, or Firm*—Ziolkowski Patent Solutions Group, LLC; Michael A. Della Penna; Carl B. Horton

(21) Appl. No.: **09/682,914**

(22) Filed: **Oct. 31, 2001**

(65) **Prior Publication Data**

US 2003/0083561 A1 May 1, 2003

(51) **Int. Cl.**⁷ **G61B 6/00**

(52) **U.S. Cl.** **378/4; 378/901; 382/141**

(58) **Field of Search** **378/4, 901, 15, 378/19; 382/141, 152, 157, 128, 130**

(56) **References Cited**

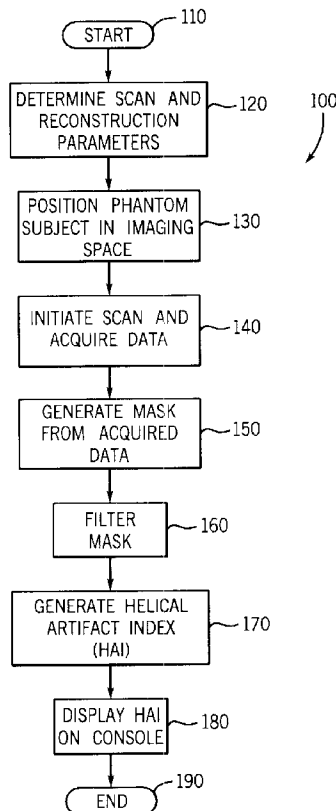
U.S. PATENT DOCUMENTS

6,115,489 A * 9/2000 Gupta et al. 382/141

(57) **ABSTRACT**

An apparatus and process for determining and displaying a helical artifact index to a system operator are provided. The HAI is determined by acquiring and processing imaging data of a phantom. The HAI is then displayed to the operator on a console so that the operator may, if necessary, reset the scanning parameters or select a new scanning protocol that will result in a reconstructed image of a subject having reduced artifact presence. By providing a likelihood of artifact presence to the system operator, the present invention eliminates the need for the operator to recall those scanning profiles that are susceptible to high artifact presence.

13 Claims, 5 Drawing Sheets



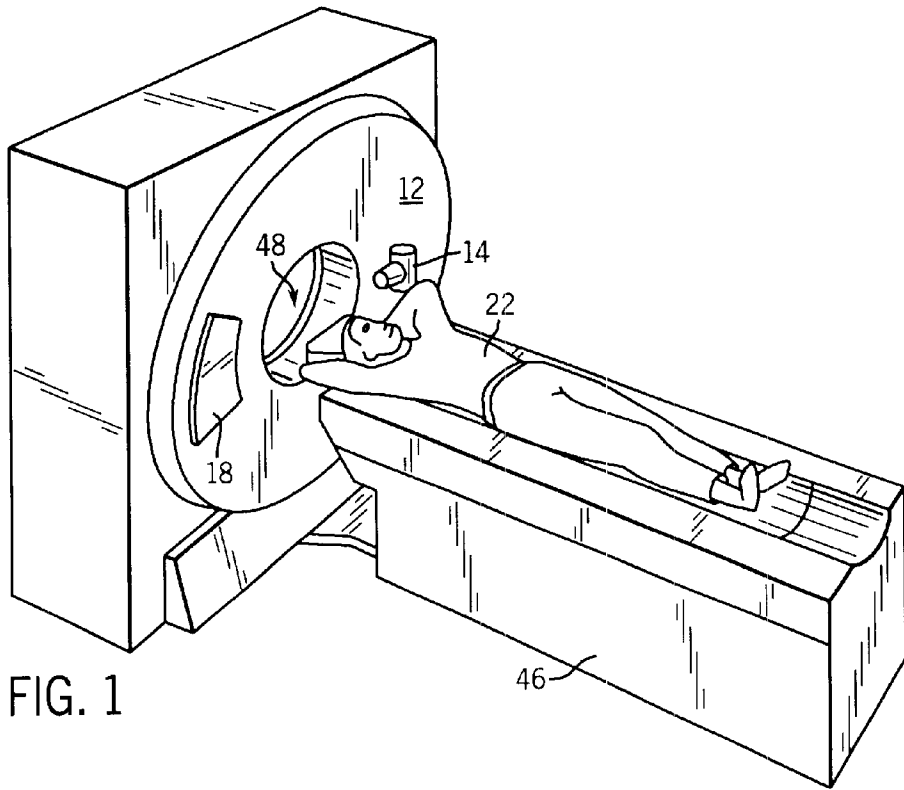
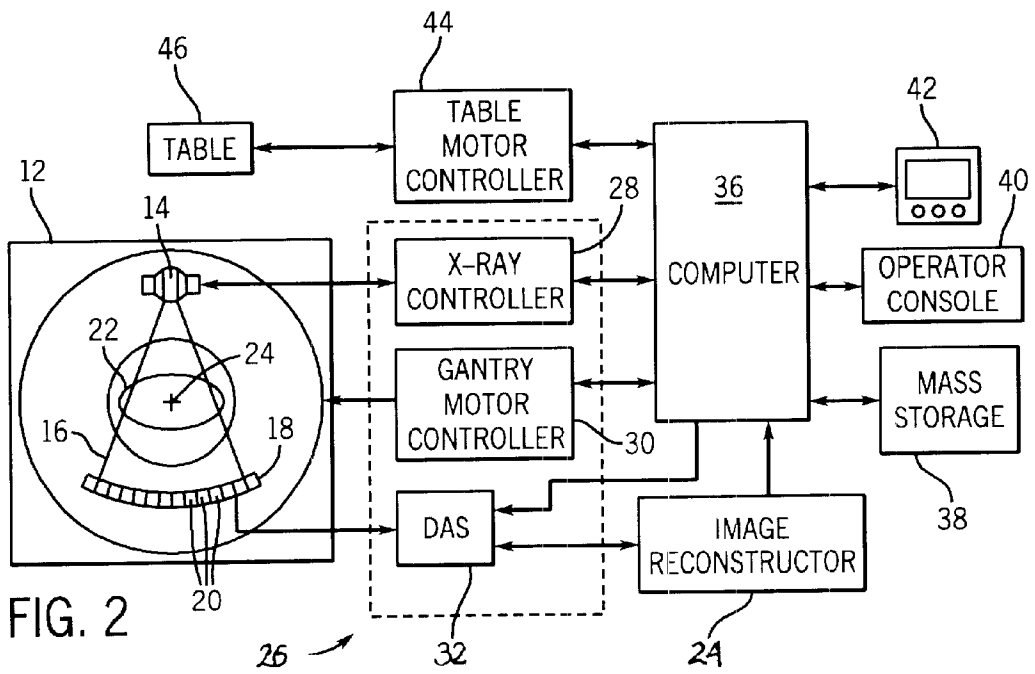


FIG. 1



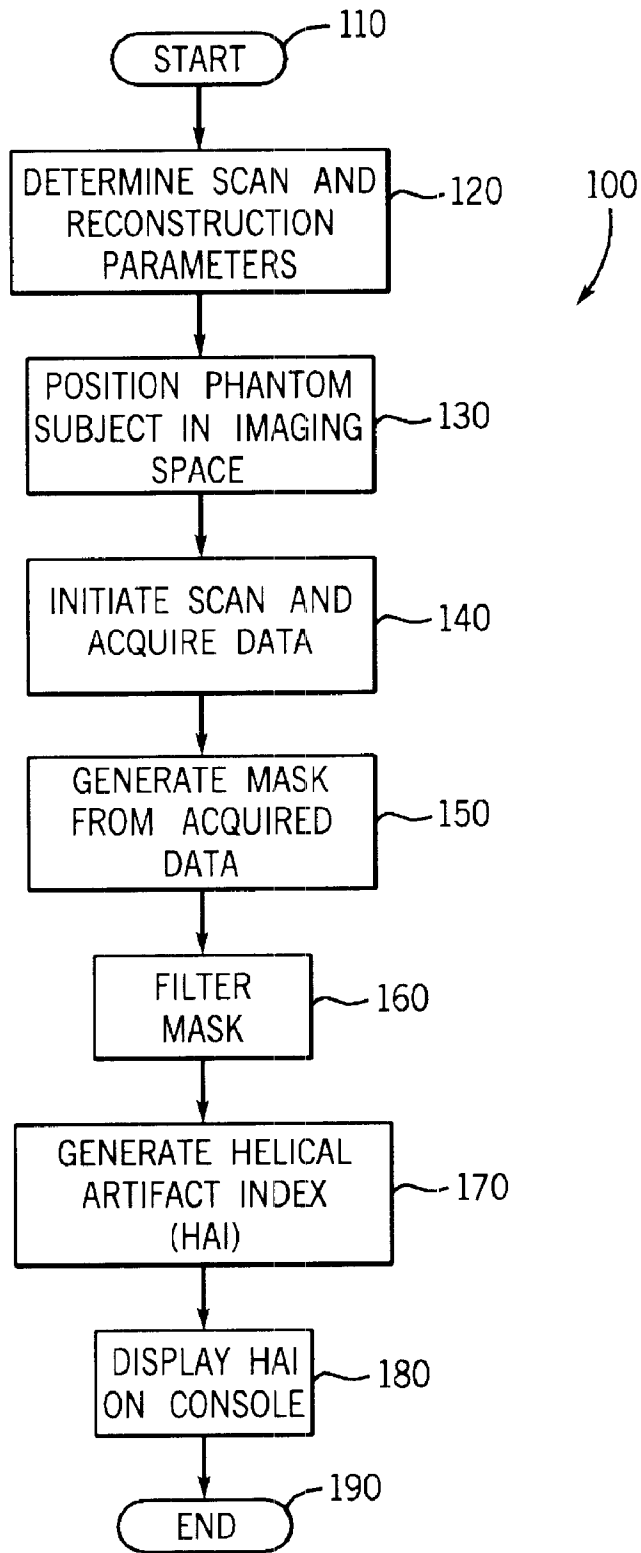


FIG. 3

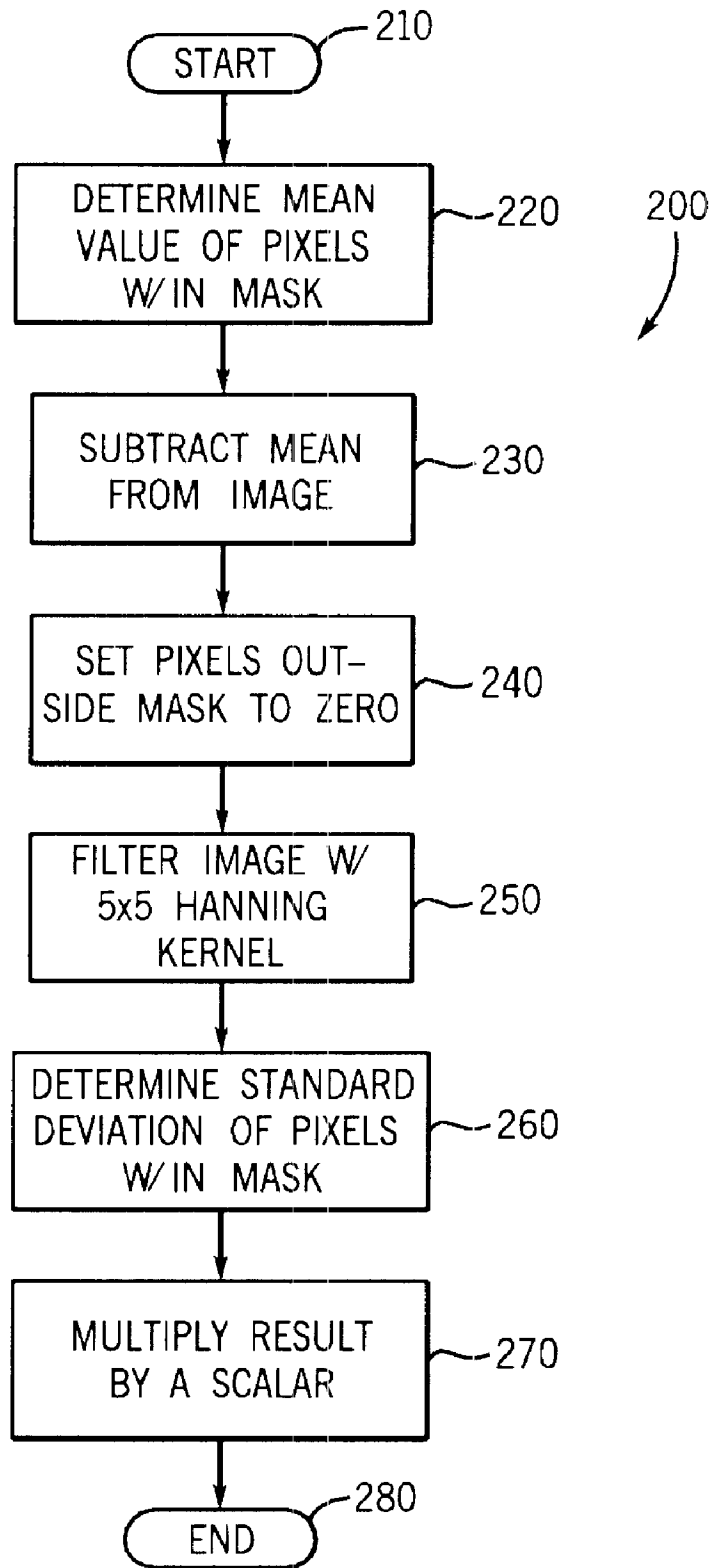


FIG. 4

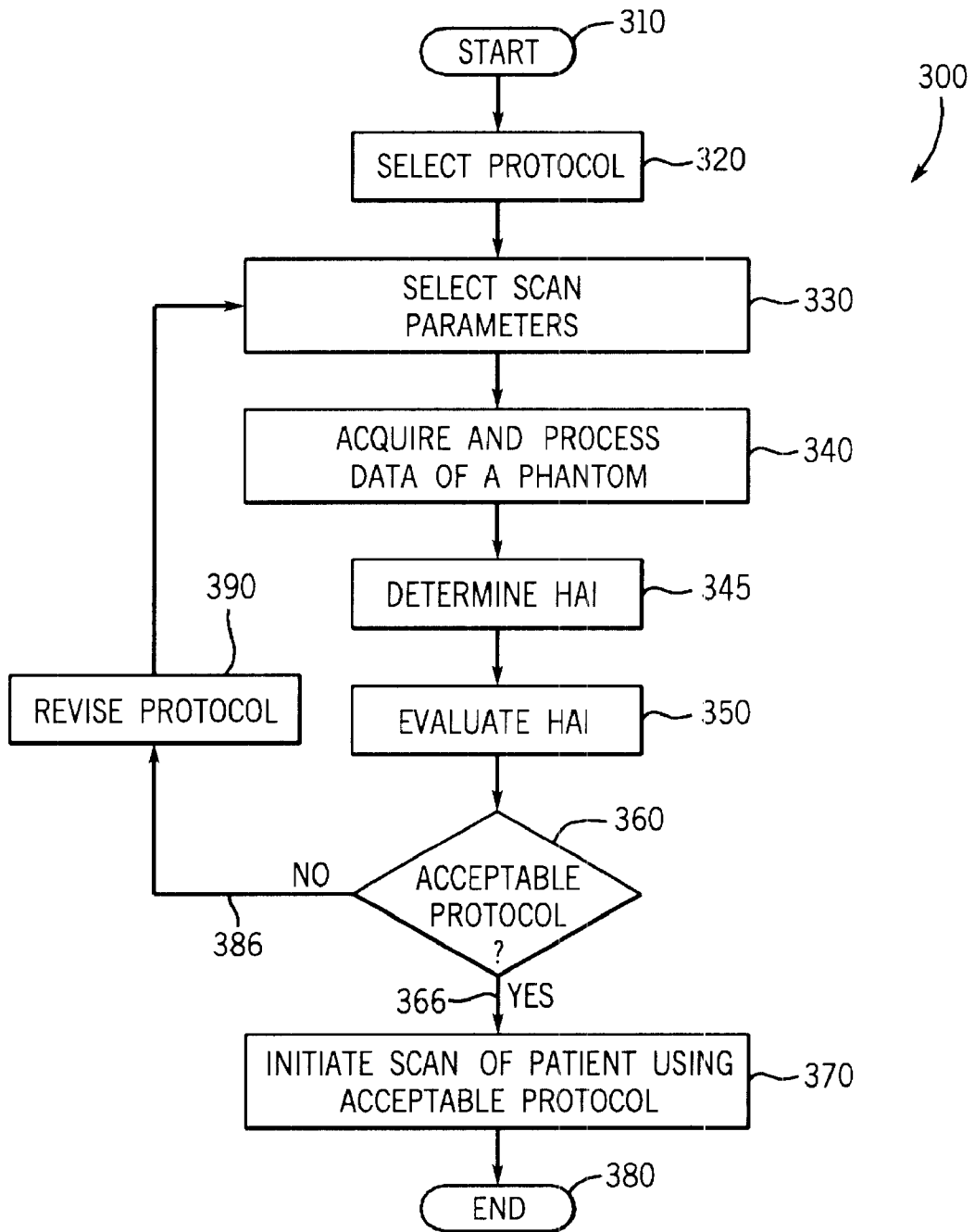


FIG. 5

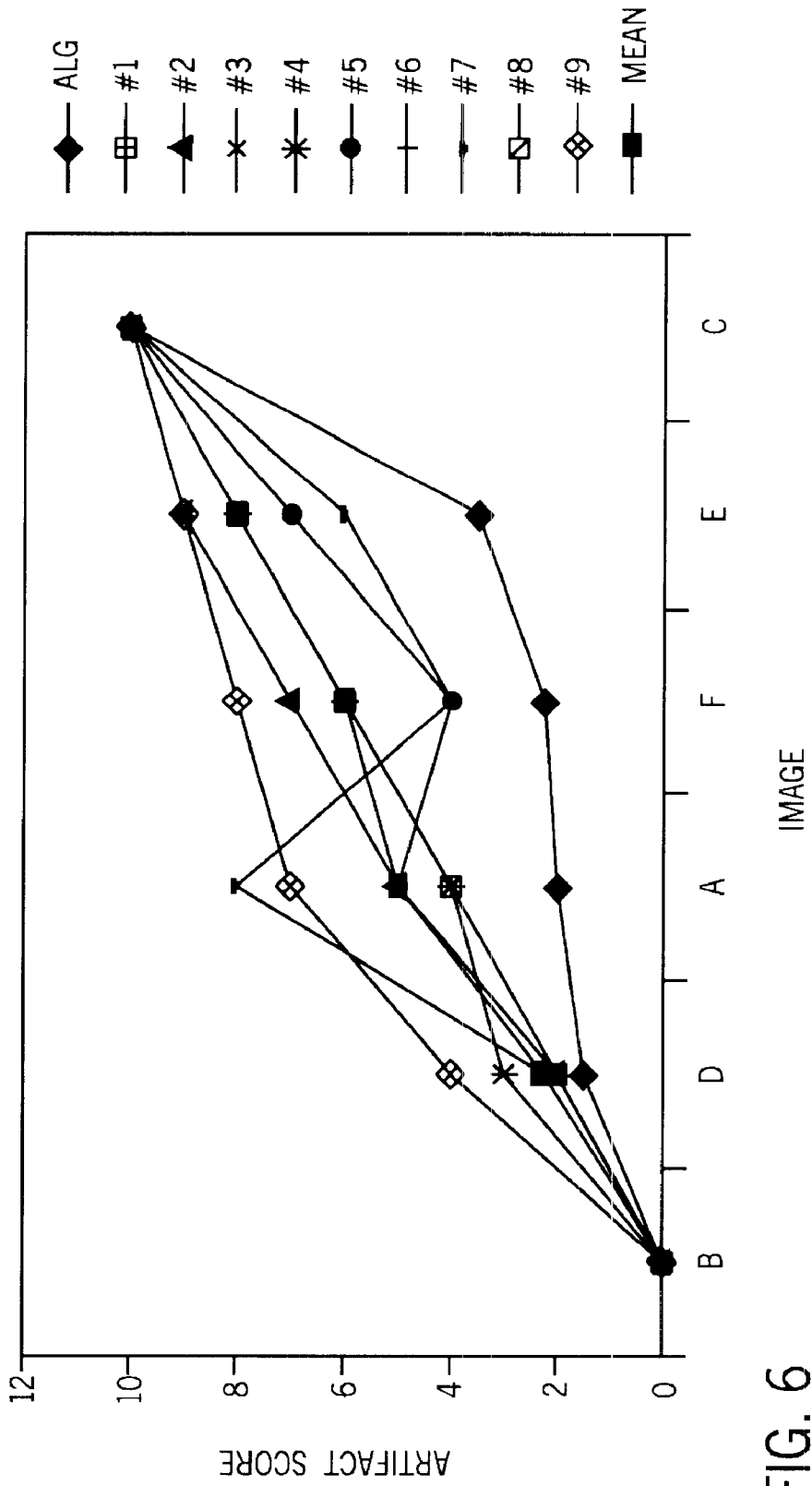


FIG. 6

METHOD AND APPARATUS OF DETERMINING AND DISPLAYING A HELICAL ARTIFACT INDEX

BACKGROUND OF THE INVENTION

The present invention relates generally to medical imaging and developing imaging protocols and, more particularly, to a method and apparatus to determine a likelihood of artifact presence in a reconstructed image and displaying the likelihood of artifact presence to an operator for evaluation. The present invention enables redevelopment and/or redesigning of the imaging protocol based upon the likelihood of artifact presence in a reconstructed image.

Typically, helical reconstruction algorithms produce artifacts in a reconstructed image due to data inconsistencies generated by a patient translation in a z direction during gantry rotation. While the intensity of artifacts depends in large part on the particular scanning parameters of the scanning session, generally these artifacts are most intense around high contrast interfaces such as bone/tissue (ribs) or air/tissue cavities. Additionally, artifact intensity typically increases with pitch but may also change depending upon the implemented helical reconstruction algorithm and detector width used to acquire imaging data.

With known imaging systems, it is incumbent upon the scanner operator to understand the artifact intensity with prescribing a patient examination. Typically, the operator learns from experience whether a particular scan procedure will result in an increased or decreased artifact presence. Moreover, the operator must be cognizant of scan versus artifact presence for a number of scanning possibilities without the benefit of any visual queues. While under some circumstances a large artifact presence in the final reconstructed image is not bothersome, for other scan procedures a reconstructed image absent visual artifacts is paramount.

For single slice CT systems that employ simple reconstruction weighting schemes, the scanning operators typically utilize the helical pitch of the scan as an indication of expected artifact. This can be difficult however for a new or inexperienced operator or for a CT system that has numerous operating modes. Furthermore, in multi-slice CT systems, with various pitch and detector width selections, an operator or technologist may find it very difficult to remember what to expect for each set of operating conditions.

Therefore, it would be desirable to design an apparatus and method that determines and visually displays a likelihood of artifact presence in a reconstructed image for evaluation by a scan system operator. Further, it would be desirable to design such a system that enables the system operator to provide feedback to the system such that artifact presence is reduced in a subsequent imaging session.

BRIEF DESCRIPTION OF INVENTION

An apparatus and process overcoming the aforementioned drawbacks is provided and includes determining and displaying a helical artifact index (HAI) to a system operator. The HAI is determined by acquiring and processing imaging data of a phantom. The HAI is then displayed to the operator on a console so that the operator may, if necessary, reset the scanning parameters or select a new scanning protocol that will result in a reconstructed image of a patient having reduced artifact presence. By providing a likelihood of artifact presence to the system operator, the present invention eliminates the need for the operator to recall those scanning profiles that are susceptible to high artifact presence.

Therefore, in accordance with one aspect of the present invention, a method of generating a helical artifact score is provided. The method includes acquiring a set of data values and setting a subset of the set of data values to an initial value. After setting the subset of data values to an initial value, the method includes filtering the set of data values. Next, a likelihood of artifact presence is determined from the filtered set of data values.

In accordance with another aspect of the present invention, a computer-readable medium having stored thereon a computer program that, when executed by one or more computers, causes the one or more computers to acquire imaging data of a phantom from an external device. The imaging data includes a plurality of pixels. The computer program further causes the one or more computers to isolate a first set and a second set of pixels and set one of the first set and the second set to an initial value. After setting one of the first set and the second set to an initial value, the computer program causes the one or more computers to filter the imaging data and determine a helical artifact index (HAI) therefrom. The computer program then causes the one or more computers to visually display the HAI on a console.

In yet another aspect of the present invention, a CT system is provided and comprises a rotatable gantry having an opening and a high frequency electromagnetic energy projection source to project high frequency energy toward an object. The CT system further includes a scintillator array having a plurality of scintillators to receive high frequency electromagnetic energy attenuated by the object. A photodiode array is provided having a plurality of photodiodes. The photodiode array is optically coupled to the scintillator array and is configured to detect light energy emitted therefrom. The CT system further includes a plurality of electrical interconnects configured to transmit photodiode outputs to a data processing system and a computer program to acquire and process data to determine a likelihood of an artifact risk presence in a reconstructed image. The computer of the CT system is further programmed to notify an operator of the determined likelihood.

Various other features, objects and advantages of the present invention will be made apparent from the following detailed description and the drawings.

BRIEF DESCRIPTION OF DRAWINGS

The drawings illustrate one preferred embodiment presently contemplated for carrying out the invention.

In the drawings:

FIG. 1 is a pictorial view of a CT imaging system;

FIG. 2 is a block schematic diagram of the system illustrated in FIG. 1;

FIG. 3 is a flow chart setting forth the steps of displaying a likelihood of artifact presence in a reconstructed image in accordance with the present invention;

FIG. 4 is a flow chart setting forth the steps of determining a likelihood of artifact presence;

FIG. 5 is a flow chart setting forth the steps of a scanning session in accordance with the present invention;

FIG. 6 is a histogram correlating the assignment of artifact presence values by the process of the present invention versus artifact value assignment by skilled observers.

DETAILED DESCRIPTION

The operating environment of the present invention is described with respect to a four-slice computed tomography

(CT) system. However, it will be appreciated by those of ordinary skill in the art that the present invention is equally applicable for use with single-slice or other multi-slice configurations. Moreover, the present invention will be described with respect to the detection and conversion of x-rays. However, one of ordinary skill in the art will further appreciate, that the present invention is equally applicable for the detection and conversion of other high frequency electromagnetic energy.

Referring to FIGS. 1 and 2, an exemplary computed tomography (CT) imaging system 10 is shown as including a gantry 12 representative of a "third generation" CT scanner. Gantry 12 has an x-ray source 14 that projects a beam of x-rays 16 toward a detector array 18 on the opposite side of the gantry 12. Detector array 18 is formed by a plurality of detectors 20 which together sense the projected x-rays that pass through a medical patient 22. Each detector 20 produces an electrical signal that represents the intensity of an impinging x-ray beam and hence the attenuated beam as it passes through the patient 22. During a scan to acquire x-ray projection data, gantry 12 and the components mounted thereon rotate about a center of rotation 24.

Rotation of gantry 12 and the operation of x-ray source 14 are governed by a control mechanism 26 of CT system 10'. Control mechanism 26 includes an x-ray controller 28 that provides power and timing signals to an x-ray source 14 and a gantry motor controller 30 that controls the rotational speed and position of gantry 12. A data acquisition system (DAS) 32 in control mechanism 26 samples analog data from detectors 20 and converts the data to digital signals for subsequent processing. An image reconstructor 34 receives sampled and digitized x-ray data from DAS 32 and performs high speed reconstruction. The reconstructed image is applied as an input to a computer 36 which stores the image in a mass storage device 38.

Computer 36 also receives commands and scanning parameters from an operator via console 40 that has a keyboard. An associated cathode ray tube display 42 allows the operator to observe the reconstructed image and other data from computer 36. The operator supplied commands

and parameters are used by computer 36 to provide control signals and information to DAS 32, x-ray controller 28 and gantry motor controller 30. In addition, computer 36 operates a table motor controller 44 which controls a motorized table 46 to position patient 22 and gantry 12. Particularly, table 46 moves portions of patient 22 through a gantry opening 48.

Referring to FIG. 3, a process 100 for acquiring imaging data of a phantom and displaying a helical artifact index (HAI) of a reconstructed image based on the acquired imaging data of the phantom is shown. The process 100 begins at 110 with the prescription of an imaging scan for a subject such as a medical patient by a scan operator or other healthcare provider. At 120, a system operator determines scan and reconstruction parameters necessary to satisfy the

prescription prescribed at 110. Once the scan and reconstruction parameters are determined at 120, a phantom is positioned in an imaging space. The present invention is applicable with any phantom designed to simulate an anatomical region of a subject. For example, the phantom may include an anthropomorphic shaped helical body phantom (HBP) having an elliptical shape and having diagonal rods at the periphery to simulate ribs of a subject. Other phantoms may also be implemented that simulate other anatomical regions such as, a heart, brain, tissue, etc.

After the phantom is positioned in the imaging space at 130, a scan is initiated and imaging data is acquired at 140 in accordance with the scan parameters defined at 120. A mask is then generated at 150 from the acquired data and filtered at 160. In a preferred embodiment, the mask is generated by identifying those pixels of the acquired imaging data within +40 CT numbers of an expected uniform material value. This is accomplished by measuring the mean for a region of pixels near the center of the phantom absent any visual artifact.

After the mask is filtered at 160, process 100 generates a helical artifact index (HAI) at 170 as will be discussed with particular reference to FIG. 4. The HAI is then displayed on a console at 180 whereupon process 100 ends at 190.

Referring to FIG. 4, an algorithm 200 for determining the HAI begins at 210 with the determining of a mean value of pixels within the mask at 220. The mean value of the pixels within the mask is then subtracted from the image at 230. At 240, the pixels outside the mask are then set to an initial value. In one preferred embodiment, the initial value is zero. This however is illustrative of only one preferred embodiment. That is, the present invention is applicable with non-zero initial values.

After the pixels outside the mask are set to an initial value 240, the imaging data acquired at 140, FIG. 3, is filtered, in a preferred embodiment, with a 5x5 Hanning kernel. An illustrative 5x5 Hanning kernel applicable with the present invention is set forth in the table below.

TABLE 1

[t]						
0.00000	0.00000	0.00000	0.00000	0.00000	0.00000	0.00000
0.00000	0.00694444	0.0208333	0.0277778	0.0208333	0.00694445	0.00000
0.00000	0.0208333	0.0625000	0.0833333	0.0625000	0.0208333	0.00000
0.00000	0.0277778	0.0833333	0.111111	0.0833333	0.0277778	0.00000
0.00000	0.0069445	0.0208333	0.0277778	0.028333	0.0069445	0.00000
0.00000	0.00694445	0.0208333	0.0277778	0.020833	0.00694445	0.00000
0.00000	0.00000	0.00000	0.00000	0.00000	0.00000	0.00000

After the imaging data is filtered at 250, a standard deviation of the pixels within the mask is determined at 260. The standard deviation is determined by squaring the pixels within the mask, summing the squares, and dividing the sum by the total number of pixels within the mask. At 270, the standard deviation is then multiplied by a scalar suitable to obtain a maximum score of 10 for the worst case of artifact presence in a reconstructed image and a minimum score of 1 for the best case of artifact risk over the set of parameters available to the user. Setting a worst case score to 10 and a best case score to 1 is illustrative of only one embodiment that may be used to ascertain an artifact risk value. That is, a best case score of 10 and a worst case score of 1 or any variation thereof is contemplated herein and is within the scope of the present invention. Process 200 then ends at 280

with the visual displaying of the artifact risk value, in a preferred embodiment, as a visual bar graph on a scan Rx console at **180** of FIG. **3** as was heretofore discussed.

Referring to FIG. **5**, algorithm **300** sets forth the steps of an acquisition, pre-processing, and reconstruction process in accordance with the present invention. Algorithm **300** begins at **310** with the selection of a scanning protocol at **320**. Once the appropriate protocol is selected at **320**, scan parameters are identified and selected at **330** that satisfy the requirements of the prescribed imaging session. Imaging data is then acquired and processed of a phantom at **340** whereupon an HAI index is determined at **345** in accordance with acts **110–190** of process **100**, FIG. **3**. The determined HAI is then evaluated by the system operator at **350** to determine if the implemented protocol selected at **320** is acceptable **360**. That is, if the HAI indicates a high likelihood of artifact presence and such a presence is unacceptable, the operator may determine at **360** that the protocol is unacceptable. However, if the artifact presence is low or that a high artifact presence is tolerable, the operator may determine that the protocol selected and implemented at **320** is acceptable.

If the protocol is acceptable **360**, **366**, the pre-processing process is complete and a scan of a patient using the acceptable protocol is executed at **370** whereupon algorithm **300** concludes at **380** with the reconstruction of an image. However, if the system operator determines at **360** that the protocol was not acceptable **386**, the pre-processing process continues at **390** with a revising of the protocol at **390**. Revising the reconstruction protocol allows the system operator to alter the reconstruction algorithm used to process the data or select new scan parameters at **330** that will facilitate image reconstruction with minimal artifact presence. Once the protocol is revised at **390** and, if necessary, new scan parameters are selected at **330**, pre-processing continues at **340** with the acquisition and processing of data of a phantom and subsequent HAI determination and evaluation at **345** and **350**. These pre-processing steps continue until an acceptable protocol is determined at **360**. That is, regeneration of an HAI during pre-processing allows the system to provide visual feedback in the form of a bar graph to the operator so that a correct protocol may be selected and implemented.

Referring to FIG. **6**, a histogram illustrating a comparison of artifact score assessment of the process of the present invention versus artifact score assessment by human observers is shown. That is, a set of helical body phantom images were evaluated using the helical artifact index generation process of the instant application. Those images were then presented to a set of skilled observers who were asked to sort and grade the images on a scale of 1 to 10 ranging from best to worst. As shown in FIG. **6**, the artifact index generation process of the instant application scored the images in the same sequence as the skilled human observers thereby confirming that the helical artifact index generation process of the instant application correctly assigned index values to the images presented to the skilled observers.

Therefore, in accordance with one embodiment of the present invention, a method of generating a helical artifact score is provided. The method includes acquiring a set of data values and setting a subset of the set of data values to an initial value. After setting the subset of data values to an initial value, the method includes filtering the set of data values. Next, a likelihood of artifact presence is determined from the filtered set of data values.

In accordance with another embodiment of the present invention, a computer-readable medium having stored thereon a computer program that, when executed by one or more computers, causes the one or more computers to acquire imaging data of a phantom from an external device.

The imaging data includes a plurality of pixels. The computer program further causes the one or more computers to isolate a first set and a second set of pixels and set one of the first set and the second set to an initial value. After setting one of the first set and the second set to an initial value, the computer program causes the one or more computers to filter the imaging data and determine a helical artifact index (HAI) therefrom. The computer program then causes the one or more computers to visually display the HAI on a console.

In yet another embodiment of the present invention, a CT system is provided and comprises a rotatable gantry having an opening and a high frequency electromagnetic energy projection source to project high frequency energy toward an object. The CT system further includes a scintillator array having a plurality of scintillators to receive high frequency electromagnetic energy attenuated by the object. A photodiode array is provided having a plurality of photodiodes. The photodiode array is optically coupled to the scintillator array and is configured to detect light energy emitted therefrom. The CT system further includes a plurality of electrical interconnects configured to transmit photodiode outputs to a data processing system and a computer program to acquire and process data to determine a likelihood of an artifact risk presence in a reconstructed image. The computer of the CT system is further programmed to notify an operator of the determined likelihood.

The present invention has been described in terms of the preferred embodiment, and it is recognized that equivalents, alternatives, and modifications, aside from those expressly stated, are possible and within the scope of the appending claims.

What is claimed is:

1. A CT system comprising:

- a rotatable gantry having an opening;
- a high frequency electromagnetic energy projection source to project high frequency energy toward an object;
- a scintillator array having a plurality of scintillators to receive high frequency electromagnetic energy attenuated by the object;
- a photodiode array having a plurality of photodiodes, wherein the photodiode array is optically coupled to the scintillator array and is configured to detect light energy emitted therefrom;
- a plurality of electrical interconnects configured to transmit photodiode outputs to a data processing system;
- a computer programmed to:
 - acquire and process data to determine a likelihood of an artifact risk presence in a reconstructed image; and
 - notify an operator of the likelihood.

2. The CT system of claim **1** wherein the likelihood is presented as a score in the range of one to ten.

3. The CT system of claim **1** further comprising a console configured to at least display the artifact risk calculation as a visual bar graph.

4. The CT system of claim **1** wherein the operator provides feedback to the CT system based on an evaluation of the likelihood.

5. The CT system of claim **1** wherein the computer program is further programmed to determine the likelihood of an artifact presence by filtering the acquired data.

6. The CT system of claim **5** wherein the computer program is further programmed to determine a standard deviation of the filtered data.

7. The CT system of claim **6** wherein the computer program is further programmed to modify the standard deviation by a scalar.

8. A method of generating a helical artifact score comprising the steps:

7

acquiring a set of imaging data of an object with a CT scanner;
establishing a subset of imaging data;
comparing the set of imaging data to the subset of imaging data;
determining a likelihood of artifact presence in a reconstructed image; and
displaying the likelihood to an operator of the CT scanner.
9. The method of claim 8 further comprising the steps of
filtering the set of imaging data and developing a mask from
the subset of data values.

8

10. The method of claim 9 wherein step of developing a mask further comprises the step of identifying a set of pixels within a range of an expected uniform material value.
11. The method of claim 10 wherein the range is ± 40 CT numbers.
12. The method of claim 10 wherein the step of establishing a subset of imaging data includes the step of isolating a region of the set of pixels absent visual artifacts.
13. The method of claim 8 wherein the object as a phantom designed to simulate an anatomical region of a medical patient.

* * * * *